



News Release

Connect with DOL at
<http://blog.dol.gov>



U.S. Department of Labor
Employment and Training Administration
Washington, D.C. 20210
Release Number: USDL 15-411-NAT

Program Contacts:
Tom Stengle (202) 693-2991
Tony Sznoluch (202) 693-3176
Media Contact: (202) 693-4676

TRANSMISSION OF MATERIALS IN THIS RELEASE IS EMBARGOED UNTIL
8:30 A.M. (Eastern) Thursday, March 12, 2015

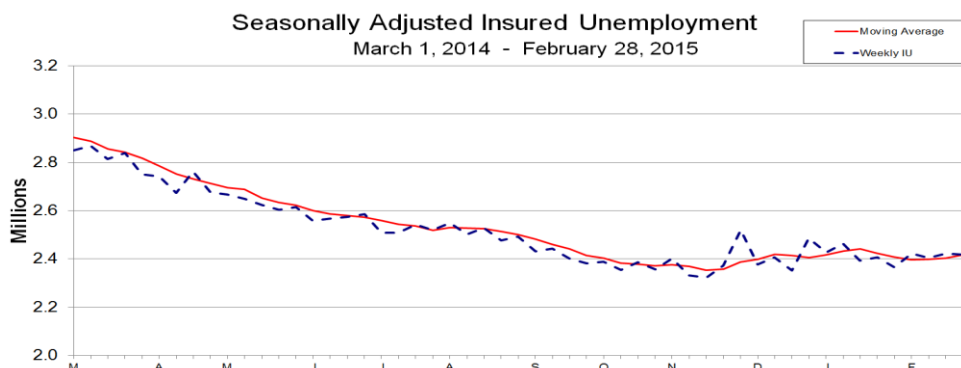
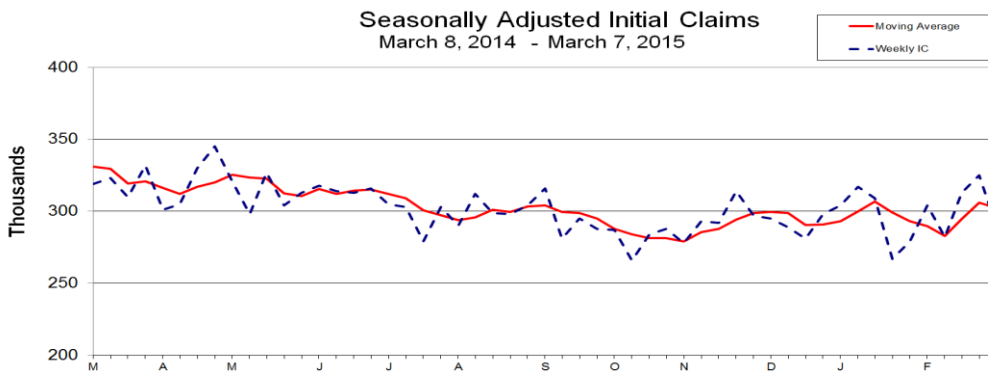
UNEMPLOYMENT INSURANCE WEEKLY CLAIMS

SEASONALLY ADJUSTED DATA

In the week ending March 7, the advance figure for seasonally adjusted **initial claims** was 289,000, a decrease of 36,000 from the previous week's revised level. The previous week's level was revised up by 5,000 from 320,000 to 325,000. The 4-week moving average was 302,250, a decrease of 3,750 from the previous week's revised average. The previous week's average was revised up by 1,250 from 304,750 to 306,000.

There were no special factors impacting this week's initial claims.

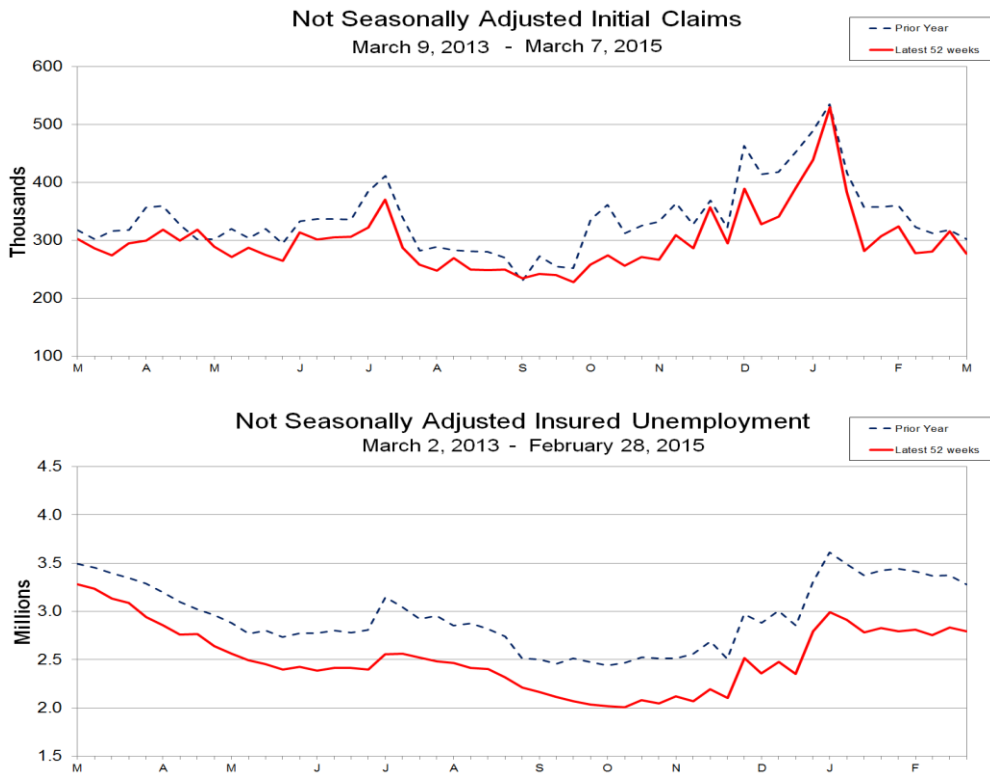
The advance seasonally adjusted **insured unemployment rate** was 1.8 percent for the week ending February 28, unchanged from the previous week's unrevised rate. The advance number for seasonally adjusted **insured unemployment** during the week ending February 28 was 2,418,000, a decrease of 5,000 from the previous week's revised level. The previous week's level was revised up 2,000 from 2,421,000 to 2,423,000. The 4-week moving average was 2,416,750, an increase of 12,750 from the previous week's revised average. The previous week's average was revised up by 500 from 2,403,500 to 2,404,000.



UNADJUSTED DATA

The advance number of actual initial claims under state programs, unadjusted, totaled 277,179 in the week ending March 7, a decrease of 38,387 (or -12.2 percent) from the previous week. The seasonal factors had expected a decrease of 3,900 (or -1.2 percent) from the previous week. There were 302,311 initial claims in the comparable week in 2014.

The advance unadjusted insured unemployment rate was 2.1 percent during the week ending February 28, unchanged from the prior week. The advance unadjusted number for persons claiming UI benefits in state programs totaled 2,793,289, a decrease of 42,080 (or -1.5 percent) from the preceding week. The seasonal factors had expected a decrease of 36,351 (or -1.3 percent) from the previous week. A year earlier the rate was 2.5 percent and the volume was 3,277,983.



The total number of people claiming benefits in all programs for the week ending February 21 was 2,891,641, an increase of 84,821 from the previous week. There were 3,450,757 persons claiming benefits in all programs in the comparable week in 2014.

No state was triggered "on" the Extended Benefits program during the week ending February 21.

Initial claims for UI benefits filed by former Federal civilian employees totaled 893 in the week ending February 28, an increase of 123 from the prior week. There were 1,330 initial claims filed by newly discharged veterans, an increase of 79 from the preceding week.

There were 16,587 former Federal civilian employees claiming UI benefits for the week ending February 21, an increase of 679 from the previous week. Newly discharged veterans claiming benefits totaled 23,029, an increase of 426 from the prior week.

The highest insured unemployment rates in the week ending February 21 were in Alaska (4.3), New Jersey (3.8), Rhode Island (3.8), Connecticut (3.5), Massachusetts (3.4), Pennsylvania (3.2), West Virginia (3.2), Montana (3.1), Puerto Rico (3.1), and California (3.0).

The largest increases in initial claims for the week ending February 28 were in New York (+21,056), Tennessee (+6,293), California (+4,550), Georgia (+2,840), and Alabama (+1,323), while the largest decreases were in Massachusetts (-3,799), Michigan (-2,086), Rhode Island (-1,050), Illinois (-791), and Maryland (-742).

UNEMPLOYMENT INSURANCE DATA FOR REGULAR STATE PROGRAMS

WEEK ENDING	March 7	February 28	Change	February 21	<u>Prior Year</u>¹
Initial Claims (SA)	289,000	325,000	-36,000	313,000	319,000
Initial Claims (NSA)	277,179	315,566	-38,387	280,639	302,311
4-Wk Moving Average (SA)	302,250	306,000	-3,750	294,500	331,250
WEEK ENDING	February 28	February 21	Change	February 14	<u>Prior Year</u>¹
Insured Unemployment (SA)	2,418,000	2,423,000	-5,000	2,404,000	2,850,000
Insured Unemployment (NSA)	2,793,289	2,835,369	-42,080	2,752,768	3,277,983
4-Wk Moving Average (SA)	2,416,750	2,404,000	+12,750	2,399,750	2,904,250
<u>Insured Unemployment Rate (SA)</u> ²	1.8%	1.8%	0.0	1.8%	2.2%
<u>Insured Unemployment Rate (NSA)</u> ²	2.1%	2.1%	0.0	2.1%	2.5%

INITIAL CLAIMS FILED IN FEDERAL PROGRAMS (UNADJUSTED)

WEEK ENDING	February 28	February 21	Change	<u>Prior Year</u>¹
Federal Employees (UCFE)	893	770	+123	1,159
Newly Discharged Veterans (UCX)	1,330	1,251	+79	1,909

PERSONS CLAIMING UI BENEFITS IN ALL PROGRAMS (UNADJUSTED)

WEEK ENDING	February 21	February 14	Change	<u>Prior Year</u>¹
Regular State	2,832,081	2,749,626	+82,455	3,370,468
Federal Employees	16,587	15,908	+679	20,812
Newly Discharged Veterans	23,029	22,603	+426	29,475
<u>Extended Benefits</u> ³	5	6	-1	104
<u>State Additional Benefits</u> ⁴	7,895	7,124	+771	10,672
<u>STC / Workshare</u> ⁵	12,044	11,553	+491	19,226
TOTAL	2,891,641	2,806,820	+84,821	3,450,757

FOOTNOTES

SA - Seasonally Adjusted Data, NSA - Not Seasonally Adjusted Data

1. Prior year is comparable to most recent data.
2. Most recent week used covered employment of 133,397,155 as denominator.
3. Information on the EB program can be found here: [EB Program information](#)
4. Some states maintain additional benefit programs for those claimants who exhaust regular, extended and emergency benefits. Information on states that participate, and the extent of benefits paid, can be found starting on page 4-5 of this link: [Extensions and Special Programs PDF](#)
5. Information on STC/Worksharing can be found starting on page 4-9 of the following link: [Extensions and Special Programs PDF](#)

UNADJUSTED INITIAL CLAIMS FOR WEEK ENDED FEBRUARY 28, 2015

STATES WITH AN INCREASE OF MORE THAN 1,000

State	Change	State Supplied Comment
NY	+21,056	Layoffs in the transportation and warehousing, accommodation and food service, and educational service industries.
TN	+6,293	Increase due to inclement weather.
CA	+4,550	Layoffs in the service industry.
GA	+2,840	Layoffs in the manufacturing industry.
AL	+1,323	Layoffs in the construction and manufacturing industries.
MO	+1,294	Layoffs in the construction, accommodation and food service, and transportation and warehousing industries.

STATES WITH A DECREASE OF MORE THAN 1,000

State	Change	State Supplied Comment
MA	-3,799	Fewer layoffs in the transportation and warehousing, and accommodation and food service industries.
MI	-2,086	Fewer layoffs in the management of companies and enterprises industry.
RI	-1,050	Fewer layoffs in the construction and manufacturing industries.

Seasonally Adjusted US Weekly UI Claims (in thousands)

Week Ending	Change from			Insured Unemployment	Change from			IUR
	Initial Claims	Prior Week	4-Week Average		Prior Week	4-Week Average		
March 1, 2014	325	-26	337.25	2,850	-40	2,904.25	2.2	
March 8, 2014	319	-6	331.25	2,869	19	2,887.50	2.2	
March 15, 2014	323	4	329.50	2,814	-55	2,855.75	2.1	
March 22, 2014	310	-13	319.25	2,838	24	2,842.75	2.2	
March 29, 2014	332	22	321.00	2,750	-88	2,817.75	2.1	
April 5, 2014	301	-31	316.50	2,741	-9	2,785.75	2.1	
April 12, 2014	305	4	312.00	2,674	-67	2,750.75	2.0	
April 19, 2014	330	25	317.00	2,761	87	2,731.50	2.1	
April 26, 2014	345	15	320.25	2,676	-85	2,713.00	2.0	
May 3, 2014	321	-24	325.25	2,666	-10	2,694.25	2.0	
May 10, 2014	298	-23	323.50	2,648	-18	2,687.75	2.0	
May 17, 2014	327	29	322.75	2,623	-25	2,653.25	2.0	
May 24, 2014	304	-23	312.50	2,603	-20	2,635.00	2.0	
May 31, 2014	313	9	310.50	2,615	12	2,622.25	2.0	
June 7, 2014	318	5	315.50	2,559	-56	2,600.00	1.9	
June 14, 2014	314	-4	312.25	2,568	9	2,586.25	2.0	
June 21, 2014	313	-1	314.50	2,575	7	2,579.25	2.0	
June 28, 2014	316	3	315.25	2,586	11	2,572.00	2.0	
July 5, 2014	305	-11	312.00	2,508	-78	2,559.25	1.9	
July 12, 2014	303	-2	309.25	2,508	0	2,544.25	1.9	
July 19, 2014	279	-24	300.75	2,542	34	2,536.00	1.9	
July 26, 2014	303	24	297.50	2,519	-23	2,519.25	1.9	
August 2, 2014	290	-13	293.75	2,549	30	2,529.50	1.9	
August 9, 2014	312	22	296.00	2,502	-47	2,528.00	1.9	
August 16, 2014	299	-13	301.00	2,528	26	2,524.50	1.9	
August 23, 2014	298	-1	299.75	2,478	-50	2,514.25	1.9	
August 30, 2014	304	6	303.25	2,492	14	2,500.00	1.9	
September 6, 2014	316	12	304.25	2,432	-60	2,482.50	1.8	
September 13, 2014	281	-35	299.75	2,442	10	2,461.00	1.8	
September 20, 2014	295	14	299.00	2,402	-40	2,442.00	1.8	
September 27, 2014	288	-7	295.00	2,382	-20	2,414.50	1.8	
October 4, 2014	287	-1	287.75	2,389	7	2,403.75	1.8	
October 11, 2014	266	-21	284.00	2,355	-34	2,382.00	1.8	
October 18, 2014	284	18	281.25	2,387	32	2,378.25	1.8	
October 25, 2014	288	4	281.25	2,356	-31	2,371.75	1.8	
November 1, 2014	278	-10	279.00	2,403	47	2,375.25	1.8	
November 8, 2014	293	15	285.75	2,333	-70	2,369.75	1.8	
November 15, 2014	292	-1	287.75	2,323	-10	2,353.75	1.8	
November 22, 2014	314	22	294.25	2,372	49	2,357.75	1.8	
November 29, 2014	297	-17	299.00	2,520	148	2,387.00	1.9	
December 6, 2014	295	-2	299.50	2,378	-142	2,398.25	1.8	
December 13, 2014	289	-6	298.75	2,407	29	2,419.25	1.8	
December 20, 2014	281	-8	290.50	2,352	-55	2,414.25	1.8	
December 27, 2014	298	17	290.75	2,485	133	2,405.50	1.9	
January 3, 2015	304	6	293.00	2,428	-57	2,418.00	1.8	
January 10, 2015	317	13	300.00	2,463	35	2,432.00	1.8	
January 17, 2015	309	-8	307.00	2,394	-69	2,442.50	1.8	
January 24, 2015	267	-42	299.25	2,406	12	2,422.75	1.8	
January 31, 2015	279	12	293.00	2,367	-39	2,407.50	1.8	
February 7, 2015	304	25	289.75	2,422	55	2,397.25	1.8	
February 14, 2015	282	-22	283.00	2,404	-18	2,399.75	1.8	
February 21, 2015	313	31	294.50	2,423	19	2,404.00	1.8	
February 28, 2015	325	12	306.00	2,418	-5	2,416.75	1.8	
March 7, 2015	289	-36	302.25					

Initial Claims Filed During Week Ended February 28 INITIAL CLAIMS							Insured Unemployment For Week Ended February 21 INSURED UNEMPLOYMENT					ALL PROGRAMS EXCLUDING RAILROAD RETIREMENT
STATE	STATE	CHANGE FROM LAST WEEK	YEAR AGO	UCFE 1	UCX 1	STATE (%) 2	CHANGE FROM LAST WEEK	YEAR AGO	UCFE 1	UCX 1		
Alabama	4095	1323	710	15	17	24960	1.4	1206	-5268	110	252	25322
Alaska	1174	19	-263	5	3	13534	4.3	-480	-4855	272	56	13862
Arizona	3724	203	-690	4	9	28760	1.2	33	-9098	321	207	29288
Arkansas	3478	425	1073	12	12	24768	2.2	1742	-2419	151	255	25174
California	47589	4550	-11554	188	224	453566	3.0	32933	-93178	3622	4547	461735
Colorado	3627	864	985	13	46	35681	1.5	-1023	-10155	462	923	37066
Connecticut	3980	-164	-791	13	7	57629	3.5	1723	-8243	87	209	57925
Delaware	1072	194	328	0	1	10951	2.7	2272	-1408	30	52	11033
District of Columbia	348	79	48	7	1	9083	1.7	161	-2183	463	28	9574
Florida	8898	-465	-3519	18	74	58189	0.8	-10364	-40753	190	532	58911
Georgia	8997	2840	1252	24	59	43087	1.1	1540	-9611	238	658	43983
Hawaii	1454	277	-52	5	22	8434	1.4	-224	-2085	101	246	8781
Idaho	1516	175	-695	15	3	14263	2.3	-740	-3255	260	67	14590
Illinois	11951	-791	-31	8	27	164201	2.9	-443	-43746	486	650	165337
Indiana	4963	-75	455	15	16	39951	1.4	1180	-11717	149	192	40292
Iowa	2530	147	-186	2	4	34967	2.3	405	-1609	91	115	35173
Kansas	2613	-396	458	2	11	20736	1.6	-294	-3468	132	191	21059
Kentucky	5841	-271	2047	14	19	29999	1.7	148	-8132	255	464	30720
Louisiana	2559	415	434	0	13	21273	1.1	334	-136	58	100	21431
Maine	1332	286	-471	1	1	15321	2.7	178	-3481	40	59	15420
Maryland	4873	-742	185	55	19	56968	2.4	1820	-4609	436	391	57795
Massachusetts	6126	-3799	-405	10	27	112682	3.4	10126	-4569	270	600	113552
Michigan	8175	-2086	-2470	30	30	102812	2.6	-314	-22734	390	443	103645
Minnesota	4613	310	17	4	10	67313	2.5	825	-8310	214	246	67773
Mississippi	1687	371	30	11	4	13345	1.2	273	-6516	147	135	13627
Missouri	8203	1294	3034	20	17	50136	1.9	1196	-6396	296	209	50641
Montana	1141	67	-68	18	4	13300	3.1	-126	-1662	625	64	13989
Nebraska	1066	-11	-410	5	1	10361	1.1	-69	-1877	37	28	10426
Nevada	3106	-99	22	3	7	26531	2.3	-2897	-5702	177	194	26902
New Hampshire	1540	678	-271	1	3	8267	1.3	-52	-2001	6	21	8294
New Jersey	9771	-359	475	16	24	142351	3.8	3859	-19032	390	529	143270
New Mexico	984	-59	-74	5	7	13683	1.8	-1040	-3600	318	146	14147
New York	38550	21056	726	69	73	240851	2.8	23360	-32851	636	1294	242781
North Carolina	4463	597	-870	5	20	39929	1.0	-934	-29671	200	478	40607
North Dakota	614	36	134	1	2	7433	1.7	117	807	20	14	7467
Ohio	11176	-179	2219	18	39	99302	2.0	7196	-11850	210	574	100086
Oklahoma	2014	-77	436	4	13	18068	1.2	296	-153	65	207	18340
Oregon	4480	-237	-1417	37	15	39449	2.4	-672	-11013	760	327	40536
Pennsylvania	22554	406	2437	75	58	178158	3.2	-5428	-31670	759	995	179912
Puerto Rico	1824	185	-206	5	13	27710	3.1	-357	-2708	77	250	28037
Rhode Island	1712	-1050	-598	1	5	17280	3.8	2148	-2040	28	65	17373
South Carolina	3162	970	-258	5	19	18890	1.0	-15	-7796	49	213	19152
South Dakota	281	41	18	3	2	3665	0.9	-4	-266	51	5	3721
Tennessee	9133	6293	4709	14	27	35639	1.3	5035	-3388	206	240	36085
Texas	17136	-46	1978	31	184	150006	1.4	3864	-14827	735	3066	153810
Utah	1441	53	-35	14	8	15097	1.2	-350	-3909	354	78	15529
Vermont	975	102	-35	1	0	7631	2.6	354	-312	22	13	7666
Virgin Islands	40	6	6	1	1	664	1.8	-280	-258	10	4	678
Virginia	4125	884	-14	11	31	37129	1.1	1276	-9155	410	829	38368
Washington	6761	81	-1493	39	77	64674	2.2	-627	-12582	693	1255	66622
West Virginia	1830	685	605	7	7	21702	3.2	3185	-1288	102	107	21911
Wisconsin	9555	-209	-479	9	11	79322	2.9	1039	-13689	197	156	79675
Wyoming	714	130	268	4	3	5668	2.1	-490	65	179	50	5897
Totals	315566	34927	-2266	893	1330	2835369	2.1	82601	-540362	16587	23029	2874990

Figures Appearing In columns showing Over-The-Week Changes reflect all revisions in data for prior week submitted by State agencies.

1. The Unemployment Compensation program for Federal Employees (UCFE) and the Unemployment Compensation for Ex-servicemembers (UCX) exclude claims filed jointly under other programs to avoid duplication.
2. Rate is not seasonally adjusted. The source of US total covered employment is BLS.

TECHNICAL NOTES

This news release presents the weekly unemployment insurance (UI) claims reported by each state's unemployment insurance program offices. These claims may be used for monitoring workload volume, assessing state program operations and for assessing labor market conditions. States initially report claims directly taken by the state liable for the benefit payments, regardless of where the claimant who filed the claim resided. These are the basis for the advance initial claims and continued claims reported each week. These data come from ETA 538, Advance Weekly Initial and Continued Claims Report. The following week initial claims and continued claims are revised based on a second reporting by states that reflect the claimants by state of residence. These data come from the ETA 539, Weekly Claims and Extended Benefits Trigger Data Report.

A. Initial Claims

An initial claim is a claim filed by an unemployed individual after a separation from an employer. The claimant requests a determination of basic eligibility for the UI program. When an initial claim is filed with a state, certain programmatic activities take place and these result in activity counts including the count of initial claims.

The count of U.S. initial claims for unemployment insurance is a leading economic indicator because it is an indication of emerging labor market conditions in the country. However, these are weekly administrative data which are difficult to seasonally adjust, making the series subject to some volatility.

B. Continued Weeks Claimed

A person who has already filed an initial claim and who has experienced a week of unemployment then files a continued claim to claim benefits for that week of unemployment. Continued claims are also referred to as insured unemployment.

The count of U.S. continued weeks claimed is also a good indicator of labor market conditions. Continued claims reflect the current number of insured unemployed workers filing for UI benefits in the nation. While continued claims are not a leading indicator (they roughly coincide with economic cycles at their peaks and lag at cycle troughs), they provide confirming evidence of the direction of the U.S. economy.

C. Seasonal Adjustments and Annual Revisions

Over the course of a year, the weekly changes in the levels of initial claims and continued claims undergo regularly occurring fluctuations. These fluctuations may result from seasonal changes in weather, major holidays, the opening and closing of schools, or other similar events. Because these seasonal events follow a more or less regular pattern each year, their influence on the level of a series can be tempered by adjusting for regular seasonal variation. These adjustments make trend and cycle developments easier to spot.

At the beginning of each calendar year, the Bureau of Labor Statistics provides the Employment and Training Administration (ETA) with a set of seasonal factors to apply to the unadjusted data during that year.

Concurrent with the implementation and release of the new seasonal factors, ETA incorporates revisions to the UI claims historical series caused by updates to the unadjusted data.

[Weekly Claims Archives](#)
[Weekly Claims Data](#)

U.S. Department of Labor news materials are accessible at <http://www.dol.gov>. The Department's [Reasonable Accommodation Resource Center](#) converts Departmental information and documents into alternative formats, which include Braille and large print. For alternative format requests, please contact the Department at (202) 693-7828 (voice) or (800) 877-8339 (federal relay).