

Unemployment Insurance Data Summary

Individual State Data

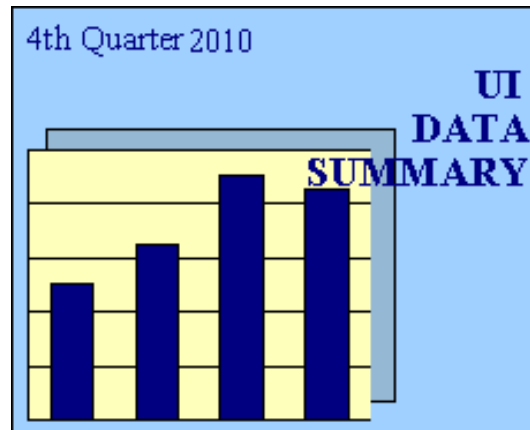
US Summary Tables

- [Summary Benefits Data](#)
- [Summary Financial Data](#)
- [Benefits and Duration Data](#)
- [Summary Labor Force Data](#)
- [Wage and Tax Rate Data](#)

Charts

Glossary of data definitions

Choose another quarter



The UI Data Summary is produced quarterly from state-reported data contained in the Unemployment Insurance Data Base (UIDB) as well as UI-related data from outside sources (e.g., Bureau of Labor Statistics data on employment and unemployment and U.S. Department of Treasury data on state UI trust fund activities). This data base is maintained by the Division of Fiscal and Actuarial Services, Office of Unemployment Insurance (OUI), U.S. Department of Labor.

This report is intended to provide the user with a quick overview of the status of the UI system at the national and state levels. Tables are provided for each state and many data items are repeated on [summary tables](#) which show all states together. The [glossary](#) gives the definition of each data item in the report. Except for reciprocity rates, UCFE and UCX data is not included. Except for covered employment and wage data, which have a reporting/processing lag, all the data refers to the same quarter. This quarter is shown on the front cover and is also the first column heading on each individual state page. The year and quarter are indicated by the notation CYyyyy.q (e.g. CY1995.4). For many data items, the report shows -- in addition to the latest quarter -- data for the latest twelve months, the highest and lowest quarters historically, and the state's rank among all states. If a state has failed to report for a particular time period, estimated data are used; however, if the time period extends too far for reasonable estimates, blanks are displayed instead.

Your comments and suggestions are welcomed. For further information please contact [Hyunchung Kim](#) or [Kevin Stapleton](#) at the Division of Fiscal and Actuarial Services, Room C-4531, 200 Constitution Ave., NW, Washington, DC 20210. You can also reach the receptionist at (202) 693-3039. If you want quarterly copies mailed to you, add your name to the [Data summary mailing list](#).

ATTENTION:

Now available on the Department of Labor, Office of Workforce Security website, and by mail, is a new report called “**Significant Measures of State Unemployment Insurance Tax Systems**” (<http://www.oui.doleta.gov/unemploy/finance.asp>). This will be a yearly report containing a compilation of new and existing tax measures for each state, which is intended to provide users with the information necessary to evaluate and compare state UI tax systems. The report is produced by the Division of Fiscal and Actuarial Services in the Office of Unemployment Insurance and calendar years 2005 through 2009 are now available.

Charts Categories: 4th Quarter 2010

[Data Summary Home](#)

[Data Summary Glossary](#)

[Data Summary Mailing List](#)

[OWS Homepage](#)

Click on desired Chart Category to jump to that section:

[Regular Benefits](#)

[Trust Fund Balance](#)

[Revenues](#)

[Regular AWBA](#)

[Initial Claims](#)

[Weeks Claimed](#)

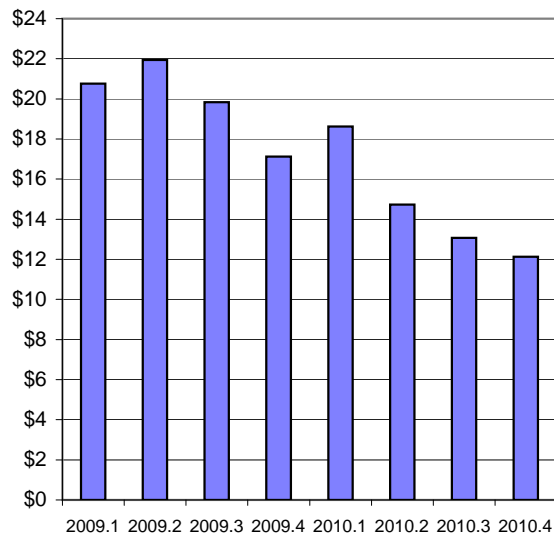
[First Payments](#)

[Exhaustions](#)

Note: Blank cells appearing in any section of this report indicates that information is unavailable.

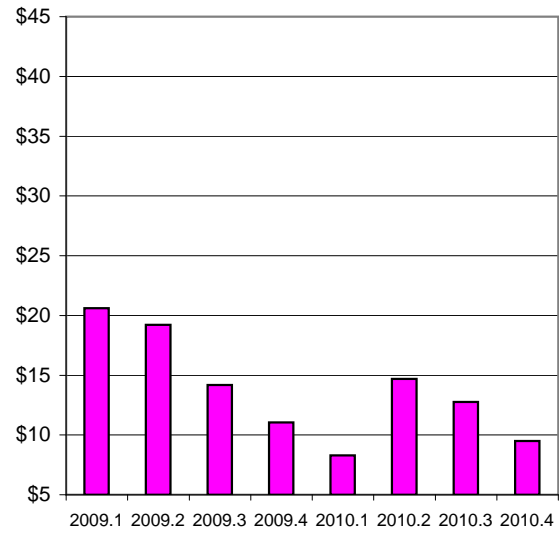
REGULAR BENEFITS

Billions



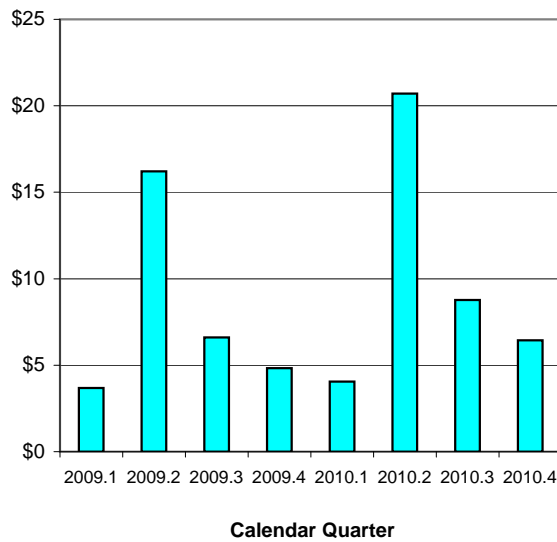
TRUST FUND BALANCE

Billions



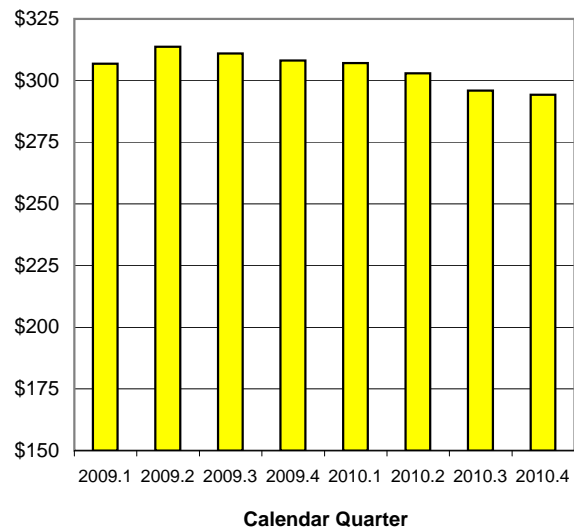
REVENUES

Billions

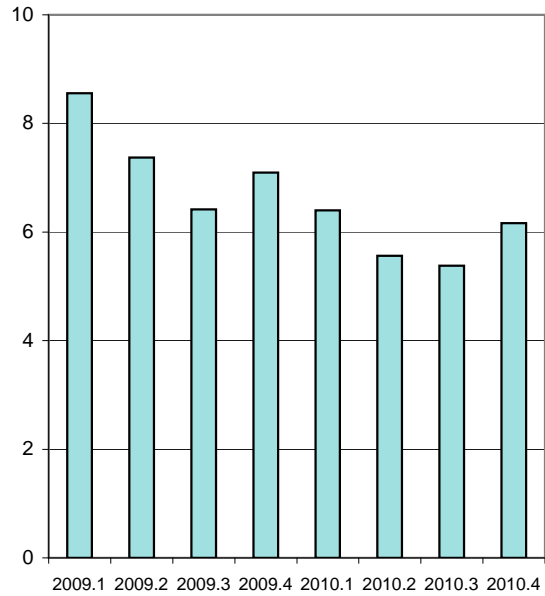


REGULAR AWBA

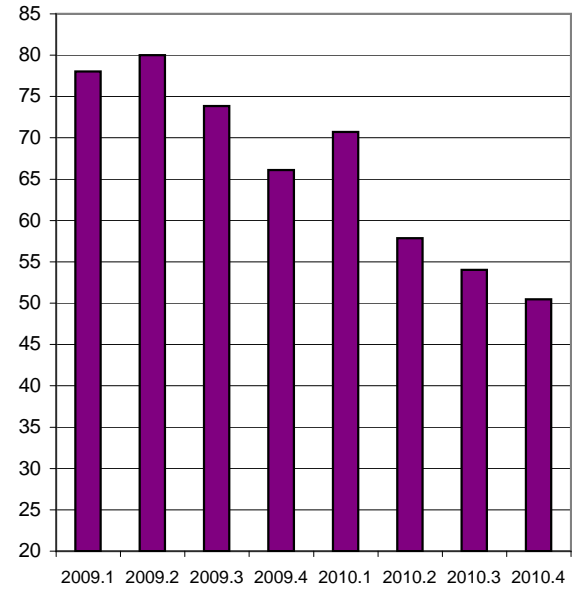
Billions



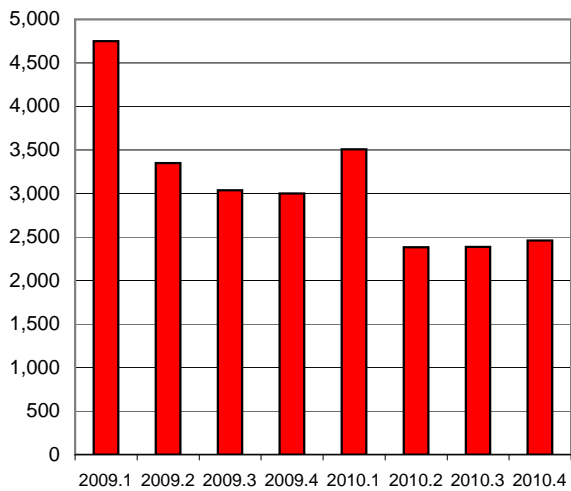
Millions

INITIAL CLAIMS

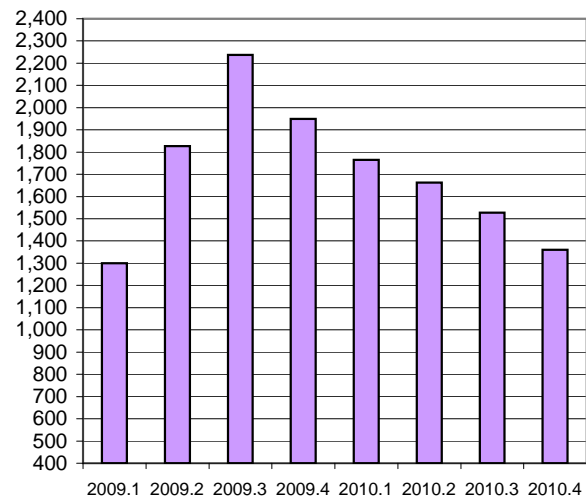
Millions

WEEKS CLAIMED**FIRST PAYMENTS**

Thousands

**EXHAUSTIONS**

Thousands



Summary Tables: 4th Quarter 2010

[Data Summary Home](#)

[Data Summary Glossary](#)

[Data Summary Mailing List](#)

[OWS Homepage](#)

Click on desired information to jump to that section:

[Summary Benefits Data](#)

[Summary Financial Data](#)

[Benefits and Duration Data](#)

[Labor Force Information](#)

[Wage and Tax Rate Information](#)

Note: Blank cells appearing in any section of this report indicates that information is unavailable.

Regular Benefits Information by State for CYQ 2010.4

State	Initial Claims	First Payments	Weeks Claimed	Weeks Compensated	Exhaustions	Exhaustion Rate
Alabama	89,144	31,558	595,854	514,014	14,034	44.2%
Alaska	32,155	10,900	221,697	201,779	6,061	76.5%
Arizona	70,059	37,326	835,483	726,121	25,516	57.2%
Arkansas	72,137	29,047	523,617	389,774	10,885	47.4%
California	954,738	353,498	7,642,332	6,739,327	209,059	58.7%
Colorado	57,940	34,492	718,995	549,314	22,684	60.9%
Connecticut	68,169	37,672	755,419	728,133	19,635	45.1%
Delaware	18,126	6,181	146,064	129,208	3,770	58.3%
District of Columbia	11,929	7,251	153,512	140,648	4,219	62.3%
Florida	254,798	117,473	2,602,620	2,242,389	88,031	67.0%
Georgia	200,468	71,445	1,443,578	982,003	40,430	54.0%
Hawaii	26,955	8,893	204,289	182,877	4,696	46.8%
Idaho	51,728	19,932	279,117	237,560	7,910	51.5%
Illinois	239,000	104,102	2,554,188	1,927,825	61,169	52.1%
Indiana	136,643	51,431	838,803	742,376	28,807	54.2%
Iowa	75,154	29,697	427,540	378,110	11,241	38.3%
Kansas	53,030	21,939	395,411	345,242	12,076	53.9%
Kentucky	90,266	24,939	510,834	490,140	12,670	41.9%
Louisiana	50,360	26,264	613,537	491,694	14,453	53.3%
Maine	29,350	11,482	188,113	157,426	4,898	47.6%
Maryland	89,377	35,869	754,483	640,008	18,734	50.6%
Massachusetts	122,818	62,906	1,251,559	1,095,726	33,549	48.3%
Michigan	247,306	91,236	1,633,263	1,402,315	45,849	49.7%
Minnesota	113,107	46,154	862,948	718,135	22,960	55.3%
Mississippi	41,598	17,414	386,926	316,140	9,682	47.9%
Missouri	137,628	41,431	806,455	727,852	22,722	51.1%
Montana	28,685	10,117	186,385	157,597	4,338	57.7%
Nebraska	29,897	12,617	218,592	169,989	6,501	52.6%
Nevada	70,349	32,397	584,486	540,782	18,439	61.0%
New Hampshire	22,804	7,511	174,245	121,662	3,276	35.6%
New Jersey	171,690	85,022	1,959,648	1,770,339	55,060	59.2%
New Mexico	24,396	12,365	288,293	251,759	8,501	65.0%
New York	364,771	146,724	3,474,791	3,008,776	86,127	53.3%
North Carolina	220,212	82,340	1,585,879	1,294,451	43,761	60.7%
North Dakota	12,135	4,576	52,543	40,741	1,530	42.6%
Ohio	212,505	66,411	1,495,116	1,198,338	34,854	49.4%
Oklahoma	45,451	16,754	380,459	322,387	10,173	55.0%
Oregon	138,688	48,839	895,361	763,368	25,456	52.8%
Pennsylvania	395,536	128,351	3,046,429	2,423,247	64,979	46.6%
Puerto Rico	35,385	21,599	631,550	579,155	21,616	63.3%
Rhode Island	26,364	10,550	188,663	169,659	6,277	57.6%
South Carolina	82,888	33,994	749,235	536,851	19,529	55.8%
South Dakota	8,973	3,064	43,524	32,716	654	25.2%
Tennessee	102,376	41,350	735,703	669,255	24,652	53.0%
Texas	238,710	127,352	2,504,288	2,183,219	74,831	56.2%
Utah	36,436	17,545	291,942	244,126	8,906	52.7%
Vermont	18,424	7,512	113,850	103,891	2,422	33.1%
Virgin Islands	989	806	13,290	11,883	348	58.0%
Virginia	102,018	41,936	701,513	587,084	19,616	50.1%
Washington	180,683	67,971	1,210,328	1,065,215	27,021	46.7%
West Virginia	26,458	13,396	230,122	199,799	4,931	38.0%
Wisconsin	220,441	83,631	1,292,233	1,163,304	28,406	38.3%
Wyoming	13,794	6,106	84,714	78,199	2,154	49.7%
United States	6,165,041	2,461,368	50,479,819	42,883,928	1,360,098	53.4%

Financial Information by State for CYO 2010.4

State	Revenues (000) {Last 12 Months}	TF Balance (000)	TF as % of Total Wages*	Loan Balance (000)	Interest Earned (000)	AHCM+	HCM+
Alabama	\$440,811	\$8,007	0.01	\$201,849	\$0	N.A.	N.A.
Alaska	\$127,032	\$245,403	2.31	\$0	\$2,685	1.02	0.53
Arizona	\$362,833	\$10,974	0.01	\$236,446	\$0	N.A.	N.A.
Arkansas	\$359,575	\$51,800	0.17	\$330,853	\$0	N.A.	N.A.
California	\$5,420,645	\$91,093	0.02	\$9,454,435	\$0	N.A.	N.A.
Colorado	\$467,423	\$10,405	0.01	\$423,087	\$0	N.A.	N.A.
Connecticut	\$714,690	\$39,709	0.05	\$522,712	\$0	N.A.	N.A.
Delaware	\$92,803	\$1,304	0.01	\$32,403	\$0	N.A.	N.A.
District of Columbia	\$141,683	\$300,732	1.07	\$0	\$3,199	1.06	0.58
Florida	\$1,254,876	\$102,956	0.05	\$1,957,500	\$0	N.A.	N.A.
Georgia	\$687,229	\$19,887	0.02	\$532,500	\$0	N.A.	N.A.
Hawaii	\$186,653	\$2,823	0.02	\$14,642	\$0	N.A.	N.A.
Idaho	\$284,710	\$105,405	0.67	\$202,402	\$0	N.A.	N.A.
Illinois	\$2,021,750	\$1,509	0.00	\$2,375,751	\$0	N.A.	N.A.
Indiana	\$587,895	\$18,148	0.02	\$1,955,480	\$0	N.A.	N.A.
Iowa	\$511,768	\$310,023	0.76	\$0	\$3,374	0.52	0.29
Kansas	\$365,794	\$43,444	0.10	\$88,159	\$44	N.A.	N.A.
Kentucky	\$459,779	\$9,144	0.02	\$804,700	\$0	N.A.	N.A.
Louisiana	\$209,127	\$895,643	1.58	\$0	\$9,570	1.6	0.51
Maine	\$148,266	\$278,708	1.89	\$0	\$2,988	0.99	0.67
Maryland	\$856,900	\$199,897	0.23	\$0	\$1,776	0.19	0.11
Massachusetts	\$1,739,926	\$18,223	0.01	\$0	\$970	0.01	0.00
Michigan	\$1,570,412	\$188,013	0.16	\$3,710,392	\$0	N.A.	N.A.
Minnesota	\$982,101	\$8,882	0.01	\$544,704	\$0	N.A.	N.A.
Mississippi	\$126,584	\$339,704	1.27	\$0	\$3,686	1.19	0.64
Missouri	\$603,677	\$18,537	0.02	\$722,117	\$0	N.A.	N.A.
Montana	\$114,151	\$111,973	1.00	\$0	\$1,239	0.7	0.33
Nebraska	\$212,482	\$215,340	0.90	\$0	\$2,372	1.18	0.58
Nevada	\$291,833	\$31,980	0.09	\$620,602	\$0	N.A.	N.A.
New Hampshire	\$161,724	\$4,283	0.02	\$0	\$87	0.02	0.01
New Jersey	\$2,338,906	\$35,807	0.02	\$1,607,867	\$0	N.A.	N.A.
New Mexico	\$268,421	\$224,869	1.05	\$0	\$2,345	0.79	0.64
New York	\$2,998,652	\$34,713	0.01	\$3,134,427	\$0	N.A.	N.A.
North Carolina	\$824,464	\$225,658	0.19	\$2,508,604	\$0	N.A.	N.A.
North Dakota	\$74,953	\$96,326	1.01	\$0	\$1,011	1.05	0.43
Ohio	\$1,254,698	\$104,059	0.07	\$2,314,187	\$0	N.A.	N.A.
Oklahoma	\$187,475	\$269,431	0.62	\$0	\$3,080	0.62	0.45
Oregon	\$850,427	\$910,585	1.91	\$0	\$9,799	0.76	0.60
Pennsylvania	\$2,477,080	\$94,082	0.05	\$3,008,615	\$0	N.A.	N.A.
Puerto Rico	\$183,881	\$294,276	1.87	\$0	\$3,186	0.7	0.42
Rhode Island	\$232,973	\$37,169	0.27	\$225,473	\$0	N.A.	N.A.
South Carolina	\$289,261	\$6,990	0.01	\$886,662	\$0	N.A.	N.A.
South Dakota	\$73,571	\$25,767	0.28	\$0	\$292	0.51	0.26
Tennessee	\$701,813	\$159,482	0.19	\$0	\$2,038	0.19	0.09
Texas	\$2,395,390	\$292,901	0.08	\$0	\$649	N.A.	N.A.
Utah	\$154,807	\$312,720	0.93	\$0	\$3,459	0.81	0.46
Vermont	\$87,556	\$1,363	0.02	\$38,475	\$0	N.A.	N.A.
Virgin Islands	\$1,243	\$194	0.02	\$17,389	\$0	N.A.	N.A.
Virginia	\$530,590	\$63,269	0.05	\$346,892	\$0	N.A.	N.A.
Washington	\$1,401,762	\$2,392,336	2.43	\$0	\$25,031	1.12	0.63
West Virginia	\$198,233	\$76,837	0.43	\$0	\$934	0.27	0.11
Wisconsin	\$924,516	\$39,472	0.05	\$1,400,851	\$0	N.A.	N.A.
Wyoming	\$92,034	\$124,298	1.57	\$0	\$1,334	1.07	0.52
United States	\$40,047,838	\$9,506,552	0.21	\$40,220,175	\$85,148	N.A.	N.A.

+ Refers to most recent calendar year. Fourth and first quarter issues publish measure based on extrapolated wages; Second and third quarter issues publish measure based on actual wages.

* Based on extrapolated wages for the most recent 12 months.

N.A. : Not Applicable -- These states have outstanding debt which may include bond debt exceeding their fund balances

Benefits and Duration Information by State for CYQ 2010.4

State	Regular Benefits Paid (000)	Extended Benefits Paid (000)	AWBA	Average Duration	Avg Benefits per First Payment
Alabama	\$102,876	\$25,114	\$203.55	16.6	\$3,359
Alaska	\$46,328	\$8,884	\$236.45	23.1	\$5,364
Arizona	\$150,790	\$50,486	\$212.51	19.5	\$4,084
Arkansas	\$99,454	\$0	\$272.40	16.8	\$4,364
California	\$1,859,289	\$634,938	\$293.68	20.0	\$5,686
Colorado	\$182,159	\$58,655	\$338.15	17.6	\$5,975
Connecticut	\$213,316	\$91,298	\$323.06	20.3	\$6,004
Delaware	\$30,075	\$8,255	\$241.15	22.9	\$5,481
District of Columbia	\$42,372	\$11,643	\$294.70	21.3	\$6,209
Florida	\$503,488	\$183,983	\$228.60	18.8	\$4,257
Georgia	\$253,817	\$87,262	\$268.25	14.7	\$3,886
Hawaii	\$73,514	\$0	\$412.47	19.7	\$7,958
Idaho	\$54,834	\$8,067	\$248.04	15.7	\$3,745
Illinois	\$605,344	\$176,191	\$316.38	21.4	\$6,711
Indiana	\$207,364	\$65,388	\$291.09	16.1	\$4,571
Iowa	\$113,352	\$0	\$316.77	15.3	\$4,674
Kansas	\$107,644	\$17,959	\$319.01	17.9	\$5,724
Kentucky	\$133,990	\$45,449	\$284.77	18.4	\$5,122
Louisiana	\$94,558	\$0	\$194.29	20.9	\$4,319
Maine	\$40,995	\$6,993	\$270.22	16.7	\$4,420
Maryland	\$198,229	\$0	\$317.60	18.9	\$5,821
Massachusetts	\$409,076	\$136,265	\$389.04	19.7	\$7,411
Michigan	\$383,214	\$171,718	\$288.24	18.9	\$5,327
Minnesota	\$238,172	\$42,903	\$347.16	20.2	\$6,882
Mississippi	\$56,573	\$0	\$187.98	17.9	\$3,252
Missouri	\$168,082	\$37,095	\$240.99	18.7	\$4,378
Montana	\$35,571	\$13	\$261.06	21.7	\$5,095
Nebraska	\$42,556	\$0	\$256.68	14.9	\$3,662
Nevada	\$159,831	\$48,640	\$308.96	20.1	\$6,143
New Hampshire	\$31,581	\$96	\$270.62	16.2	\$4,213
New Jersey	\$657,850	\$248,529	\$396.10	20.8	\$7,792
New Mexico	\$75,401	\$31,671	\$302.42	21.2	\$6,602
New York	\$860,783	\$394,502	\$303.15	20.2	\$5,898
North Carolina	\$361,480	\$132,896	\$291.99	18.2	\$5,232
North Dakota	\$12,452	\$0	\$308.43	13.7	\$4,226
Ohio	\$449,456	\$148,490	\$291.40	19.9	\$7,030
Oklahoma	\$86,771	\$0	\$273.23	19.1	\$5,243
Oregon	\$213,938	\$64,220	\$291.44	18.6	\$5,206
Pennsylvania	\$749,460	\$190,842	\$336.91	19.9	\$6,205
Puerto Rico	\$65,768	\$38,265	\$117.87	21.6	\$2,469
Rhode Island	\$61,576	\$21,992	\$381.47	17.2	\$6,251
South Carolina	\$119,264	\$37,602	\$232.62	17.0	\$3,844
South Dakota	\$8,333	\$0	\$244.06	14.4	\$3,616
Tennessee	\$153,348	\$59,059	\$232.89	16.6	\$3,642
Texas	\$650,466	\$212,128	\$312.60	18.1	\$5,449
Utah	\$74,040	\$0	\$311.94	16.4	\$5,038
Vermont	\$28,461	\$0	\$291.52	18.1	\$5,083
Virgin Islands	\$3,289	\$0	\$295.49	17.9	\$5,113
Virginia	\$158,921	\$21,311	\$285.47	15.3	\$4,213
Washington	\$360,763	\$104,998	\$366.79	19.5	\$6,902
West Virginia	\$47,603	\$10,403	\$266.03	17.3	\$4,212
Wisconsin	\$267,988	\$61,876	\$268.97	17.8	\$4,236
Wyoming	\$24,370	\$0	\$318.68	17.3	\$5,707
United States	\$12,130,222	\$3,696,077	\$294.29	18.9	\$5,452

Labor Force Information by State (Levels in thousands) for CYQ 2010.4

State	IUR (%)	TUR (%)	Covered Employment **	Civilian Labor Force	Total Unemployment	Insured Unemployment	
						Regular Programs *	All Programs +
Alabama	2.8	8.9	1,764	2,120	188.6	48.4	100.7
Alaska	4.7	7.7	302	360	27.8	13.9	22.6
Arizona	3.0	9.5	2,289	3,174	301.2	68.0	159.8
Arkansas	3.8	7.4	1,122	1,354	100.5	41.6	53.2
California	4.2	12.3	14,262	18,129	2,229.6	595.1	1,318.4
Colorado	2.7	8.7	2,122	2,670	232.1	56.6	134.4
Connecticut	3.6	8.7	1,585	1,891	163.9	57.0	131.7
Delaware	2.8	8.1	394	422	34.4	11.1	23.0
District of Columbia	1.2	9.6	487	330	31.6	5.7	12.1
Florida	3.0	11.8	6,988	9,258	1,092.0	209.9	533.1
Georgia	3.3	10.2	3,656	4,686	477.7	118.5	362.5
Hawaii	2.9	6.2	550	627	39.0	16.2	26.8
Idaho	3.8	9.4	595	757	71.1	22.5	41.0
Illinois	3.6	9.0	5,440	6,649	595.5	194.7	411.9
Indiana	2.5	9.2	2,684	3,121	288.4	67.4	165.5
Iowa	2.3	5.9	1,427	1,675	98.9	33.0	58.2
Kansas	2.5	6.6	1,279	1,498	98.3	31.4	58.0
Kentucky	2.5	9.8	1,682	2,085	204.5	41.0	96.3
Louisiana	2.8	7.3	1,809	2,086	152.9	49.9	65.2
Maine	2.7	7.3	563	696	50.9	15.1	27.7
Maryland	2.8	7.2	2,339	2,972	212.8	65.7	109.5
Massachusetts	3.1	8.0	3,116	3,491	277.5	96.4	223.7
Michigan	3.5	10.8	3,731	4,747	510.6	129.5	346.0
Minnesota	2.7	6.6	2,540	2,958	194.8	67.0	138.6
Mississippi	3.2	9.8	1,053	1,319	129.4	33.3	60.5
Missouri	2.6	9.2	2,540	2,988	275.8	65.2	137.6
Montana	3.7	7.2	409	494	35.6	15.2	23.7
Nebraska	1.9	4.0	885	973	39.3	16.6	28.0
Nevada	4.2	14.5	1,095	1,331	192.9	46.2	114.1
New Hampshire	2.3	5.4	596	740	39.8	13.4	20.4
New Jersey	4.1	8.8	3,736	4,464	393.2	150.9	385.1
New Mexico	3.1	8.3	752	958	79.4	23.1	48.0
New York	3.3	8.1	8,285	9,550	771.6	270.3	601.2
North Carolina	3.4	9.7	3,732	4,457	430.6	126.4	327.0
North Dakota	1.1	3.4	349	367	12.4	3.8	5.7
Ohio	2.5	9.2	4,841	5,893	544.6	118.3	292.9
Oklahoma	2.2	6.7	1,443	1,751	116.8	31.0	43.5
Oregon	4.7	10.3	1,573	1,989	204.2	72.7	153.7
Pennsylvania	4.3	8.1	5,400	6,319	513.1	228.6	459.0
Puerto Rico	5.4	15.3	915	1,291	197.4	50.3	110.3
Rhode Island	3.4	11.0	440	577	63.3	14.8	32.8
South Carolina	3.6	10.8	1,739	2,150	232.5	62.5	128.1
South Dakota	0.9	4.5	381	443	19.9	3.4	4.8
Tennessee	2.4	9.1	2,519	3,065	279.2	59.6	142.9
Texas	2.0	8.1	9,984	12,192	982.7	199.0	432.3
Utah	2.1	7.3	1,114	1,359	98.7	23.3	43.1
Vermont	3.0	5.5	282	361	19.8	8.5	12.1
Virgin Islands	2.3		43			1.0	1.9
Virginia	1.6	6.4	3,389	4,163	267.6	54.5	93.1
Washington	3.5	9.1	2,734	3,527	321.5	95.6	207.9
West Virginia	2.7	9.0	669	776	70.2	17.9	34.5
Wisconsin	3.9	7.1	2,615	3,039	215.3	101.1	195.9
Wyoming	2.1	6.2	264	291	18.1	5.6	9.8
United States	3.2	9.2	126,504	153,502	14,061.0	3,967.4	8,769.8

* Includes State UI, UCFE, and UCX

+ Includes EUC08 + EB

** Wages and Covered Employment lag the rest of the Data Summary information by 6 months.

Note: Blank cells appearing in any section of this report indicates that information is unavailable.

Wage and Tax Rate Information by State for CYQ 2010.2

State	Total Wages (000)	Total Wages (Taxed Employers) (000)	Taxable Wages (000)	Average Tax Rates on:		Current Taxable Wage Base
				Taxable Wages	Total Wages	
Alabama	\$16,775,569	\$13,424,881	\$2,537,599	2.93	0.69	\$8,000
Alaska	\$3,498,859	\$2,637,985	\$1,920,800	1.91	1.17	\$34,100
Arizona	\$24,125,432	\$19,162,448	\$2,756,344	1.88	0.38	\$7,000
Arkansas	\$9,842,608	\$7,676,069	\$2,969,284	2.96	1.02	\$12,000
California	\$179,999,721	\$139,984,373	\$16,785,631	4.71	0.76	\$7,000
Colorado	\$23,653,507	\$19,583,838	\$4,188,140	2.00	0.50	\$10,000
Connecticut	\$22,107,723	\$16,979,300	\$4,149,512	3.42	0.88	\$15,000
Delaware	\$4,462,950	\$3,521,286	\$712,694	2.27	0.53	\$10,500
District of Columbia	\$8,381,224	\$6,741,231	\$643,802	2.42	0.36	\$9,000
Florida	\$70,157,628	\$55,866,404	\$9,185,991	2.24	0.47	\$7,000
Georgia	\$37,902,502	\$31,218,180	\$5,756,989	2.10	0.48	\$8,500
Hawaii	\$5,350,070	\$3,918,151	\$3,109,611	1.59	0.78	\$34,900
Idaho	\$4,948,699	\$3,859,347	\$3,064,008	2.21	1.51	\$33,300
Illinois	\$63,884,313	\$50,338,140	\$12,739,427	3.13	0.83	\$12,520
Indiana	\$25,310,680	\$20,154,185	\$3,201,565	2.89	0.63	\$7,000
Iowa	\$13,056,124	\$9,962,405	\$6,710,213	2.04	1.11	\$24,700
Kansas	\$12,036,426	\$10,927,575	\$3,293,876	2.29	0.76	\$8,000
Kentucky	\$16,073,418	\$12,124,405	\$2,394,455	3.43	0.85	\$8,000
Louisiana	\$17,905,836	\$13,989,426	\$2,532,539	1.57	0.36	\$7,700
Maine	\$5,012,006	\$3,572,731	\$1,286,299	2.39	0.84	\$12,000
Maryland	\$27,727,659	\$21,129,432	\$3,305,644	4.08	0.83	\$8,500
Massachusetts	\$42,759,068	\$33,224,345	\$9,038,078	3.96	1.14	\$14,000
Michigan	\$39,747,923	\$29,949,318	\$5,662,670	4.98	1.15	\$9,000
Minnesota	\$28,519,122	\$21,480,024	\$12,371,221	1.76	0.85	\$27,000
Mississippi	\$8,744,099	\$6,705,179	\$1,385,644	1.57	0.39	\$7,000
Missouri	\$24,843,868	\$18,980,708	\$6,454,775	2.11	0.68	\$13,000
Montana	\$3,410,993	\$2,735,562	\$2,119,624	1.30	0.87	\$26,000
Nebraska	\$7,909,552	\$5,903,020	\$1,367,129	2.81	0.76	\$9,000
Nevada	\$11,233,029	\$9,351,072	\$6,449,709	1.22	0.70	\$27,000
New Hampshire	\$6,674,753	\$5,025,283	\$964,234	3.19	0.73	\$10,000
New Jersey	\$49,681,096	\$39,028,279	\$20,190,157	2.34	1.04	\$29,700
New Mexico	\$7,042,445	\$5,262,656	\$3,013,788	1.30	0.66	\$21,900
New York	\$115,869,756	\$84,810,114	\$10,521,833	4.38	0.69	\$8,500
North Carolina	\$36,694,965	\$28,796,953	\$14,719,915	1.73	0.76	\$19,700
North Dakota	\$3,182,743	\$2,334,056	\$1,601,958	1.25	0.70	\$24,700
Ohio	\$48,178,730	\$36,823,766	\$7,452,797	3.11	0.75	\$9,000
Oklahoma	\$13,112,343	\$10,767,635	\$4,859,890	0.90	0.36	\$14,900
Oregon	\$15,904,863	\$11,775,517	\$8,375,686	2.44	1.48	\$32,100
Pennsylvania	\$58,999,300	\$44,325,924	\$6,720,875	5.42	1.09	\$8,000
Puerto Rico	\$5,730,888	\$3,825,781	\$1,277,281	3.23	1.02	\$7,000
Rhode Island	\$4,664,835	\$3,298,563	\$1,630,803	3.59	1.50	\$19,000
South Carolina	\$15,877,620	\$12,359,831	\$2,107,198	2.25	0.50	\$7,000
South Dakota	\$3,055,072	\$2,277,275	\$699,614	2.28	0.73	\$10,000
Tennessee	\$25,089,551	\$20,245,714	\$4,279,903	3.15	0.80	\$9,000
Texas	\$111,065,729	\$91,886,931	\$16,565,811	2.51	0.56	\$9,000
Utah	\$10,393,711	\$8,276,606	\$5,680,103	0.67	0.39	\$28,300
Vermont	\$2,737,263	\$1,867,014	\$463,195	3.33	0.92	\$10,000
Virgin Islands	\$388,692	\$256,729	\$161,989	0.20	0.12	\$22,200
Virginia	\$39,304,880	\$32,630,690	\$4,545,764	1.88	0.36	\$8,000
Washington	\$31,500,076	\$24,024,172	\$16,751,469	1.94	1.14	\$37,300
West Virginia	\$6,142,476	\$4,486,887	\$1,578,830	2.88	1.03	\$12,000
Wisconsin	\$25,240,351	\$18,724,968	\$5,815,036	3.43	1.07	\$12,000
Wyoming	\$2,678,106	\$1,989,171	\$1,142,137	2.01	1.00	\$22,800
United States	\$1,398,590,852	\$1,090,201,537	\$279,213,541	2.81	0.76	\$12,213

Individual State Pages: 4th Quarter 2010

[Data Summary Home](#)

[Data Summary Glossary](#)

[Data Summary Mailing List](#)

[OWS Homepage](#)

Click on Desired State:

Alaska	Alabama	Arkansas	Arizona	California	Colorado
Connecticut	District of Columbia	Delaware	Florida	Georgia	Hawaii
Iowa	Idaho	Illinois	Indiana	Kansas	Kentucky
Louisiana	Massachusetts	Maryland	Maine	Michigan	Minnesota
Missouri	Mississippi	Montana	North Carolina	North Dakota	Nebraska
New Hampshire	New Jersey	New Mexico	Nevada	New York	Ohio
Oklahoma	Oregon	Pennsylvania	Puerto Rico	Rhode Island	South Carolina
South Dakota	Tennessee	Texas	Utah	Virginia	Virgin Islands
Vermont	Washington	Wisconsin	West Virginia	Wyoming	United States

Note: Blank cells appearing in any section of this report indicates that information is unavailable.

UI Data Summary for **Alabama**

CYQ: 2010.4

Benefits

	(Quarterly)	Past 12 Months	Rank	High Value : Qtr		Low Value : Qtr	
Benefits Paid (000):	\$102,876	\$471,484	30	\$179,607	2009.2	\$7,540	1973.3
Initial Claims:	89,144	340,053	23	199,272	1982.1	27,174	1973.2
First Payments:	31,558	140,350	27	87,774	1982.1	11,594	1973.2
Weeks Claimed:	595,854	2,657,313	28	1,008,116	1983.1	202,249	1973.2
Wks Compensated:	514,014	2,327,669	28	873,723	2009.2	163,877	1973.4
Exhaustions:	14,034	70,400	29	26,956	2009.3	3,671	1973.4
Exhaustion Rate:		44.2%	45	45.4%	2010.2	17.4%	1990.3
Average Duration:		16.6	42	17.9	2010.1	9.2	1995.4
AWBA:	\$203.55	\$205.80	50	\$208.96	2009.4	\$40.78	1971.2
As % of AWW:		27.7	46				
Avg. Benefits per First Payment:		\$3,359					

Financial Information

	Past 12 Months	Rank
State Revenues (000):	\$440,811	26
Total Wages (000)**:	\$16,775,569	25
Total Wages (Taxable Employers)(000)**:	\$13,424,881	25
Taxable Wages (000)**:	\$2,537,599	31
Avg. Weekly Wage**:	\$743.78	33
Avg. Tax Rate on Taxable Wages (%) **:	2.93	18
Avg. Tax Rate on Total Wages (%) **:	0.69	35
Calendar Yr Taxable Wage Base:	\$8,000	43
Trust Fund (TF) Balance (000):		
(Including Loans):	\$8,007	46
TF as % of Total Wages*:	0.01	45
Interest Earned (000):	\$0	39
Avg. High Cost Multiple +:	N.A.	24
High Cost Multiple +:	N.A.	24

Labor Force

	(Quarterly)	Past 12 Mos	Rank
IUR (%):	2.8	3.1	31
TUR (%):	8.9	9.5	23
Total Unemp. (000):	188.6	202.2	28
Insured Unemployed (000) ***			
Regular Programs:	48.4	53.6	28
All Programs:	100.7	107.6	27
Reciency Rates (%) ***			
Regular Programs:	26	27	33
All Programs:	53	53	34
Covered Emp. (000)**:	1,764	1,755	24
Civ. Labor Force (000):	2,120	2,127	24
Subj. Employers (000):	86	87	28

Extended Benefits

	(Quarterly)	Past 12 Months
Extended Benefits (000):	\$25,114	\$61,041
EB First Payments:	6,525	20,820
EB Weeks Claimed:	126,180	285,554
EB Exhaustions:	5,361	12,261

Loans

	Rank
Outstanding Loan Bal (000):	\$201,849 25
Loan per Cov Employee:	\$114 25
Loan as % of Total Wages*:	0.3705 25

* Based on extrapolated wages for the most recent 12 months.

** Wages and Covered Employment lag the rest of the Data Summary information by six months

*** Regular programs include State UI, UCFE and UCX.

+ Refers to most recent calendar year. Fourth and first quarter issues publish measure based on extrapolated wages. Second and third quarter issues publish measure based on actual wages.

See glossary for data definitions

Note: Blank cells appearing in any section of this report indicates that information is unavailable.

UI Data Summary for **Alaska**

 CYQ: **2010.4**

Benefits

	(Quarterly)	Past 12 Months	Rank	High Value : Qtr		Low Value : Qtr	
Benefits Paid (000):	\$46,328	\$185,141	42	\$60,313	2010.1	\$1,663	1971.3
Initial Claims:	32,155	113,771	38	33,787	2009.4	6,230	1973.2
First Payments:	10,900	34,516	42	19,617	1977.1	2,132	1971.3
Weeks Claimed:	221,697	863,545	40	269,282	2010.1	39,062	1971.3
Wks Compensated:	201,779	797,554	39	321,508	1977.1	36,386	1971.3
Exhaustions:	6,061	25,653	41	9,445	1986.2	937	1971.3
Exhaustion Rate:		76.5%	1	76.5%	2010.4	20.2%	1976.3
Average Duration:		23.1	1	24.0	2010.2	14.1	2002.2
AWBA:	\$236.45	\$239.37	45	\$246.29	2010.1	\$46.09	1971.3
As % of AWW:		27.0	48				
Avg. Benefits per First Payment:		\$5,364					

Financial Information

	Past 12 Months	Rank
State Revenues (000):	\$127,032	45
Total Wages (000)**:	\$3,498,859	47
Total Wages (Taxable Employers)(000)**:	\$2,637,985	48
Taxable Wages (000)**:	\$1,920,800	41
Avg. Weekly Wage**:	\$888.16	13
Avg. Tax Rate on Taxable Wages (%) **:	1.91	39
Avg. Tax Rate on Total Wages (%) **:	1.17	4
Calendar Yr Taxable Wage Base:	\$34,100	3
Trust Fund (TF) Balance (000):		
(Including Loans):	\$245,403	12
TF as % of Total Wages*:	2.31	2
Interest Earned (000):	\$2,685	11
Avg. High Cost Multiple +:	1.02	8
High Cost Multiple +:	0.53	8

Labor Force

	(Quarterly)	Past 12 Mos	Rank
IUR (%):	4.7	4.8	2
TUR (%):	7.7	8.0	33
Total Unemp. (000):	27.8	28.9	48
Insured Unemployed (000) ***			
Regular Programs:	13.9	14.2	45
All Programs:	22.6	23.0	46
Reciency Rates (%) ***			
Regular Programs:	50	49	1
All Programs:	81	79	4
Covered Emp. (000)**:	302	297	50
Civ. Labor Force (000):	360	361	50
Subj. Employers (000):	17	17	53

Extended Benefits

	(Quarterly)	Past 12 Months
Extended Benefits (000):	\$8,884	\$42,585
EB First Payments:	3,201	13,419
EB Weeks Claimed:	36,699	178,803
EB Exhaustions:	2,661	8,237

Loans

	Rank
Outstanding Loan Bal (000):	\$0 31
Loan per Cov Employee:	\$0 31
Loan as % of Total Wages*:	0.0000 31

* Based on extrapolated wages for the most recent 12 months.

** Wages and Covered Employment lag the rest of the Data Summary information by six months

*** Regular programs include State UI, UCFE and UCX.

+ Refers to most recent calendar year. Fourth and first quarter issues publish measure based on extrapolated wages. Second and third quarter issues publish measure based on actual wages.

See glossary for data definitions

Note: Blank cells appearing in any section of this report indicates that information is unavailable.

UI Data Summary for **Arizona**

CYQ: 2010.4

Benefits

	(Quarterly)	Past 12 Months	Rank	High Value : Qtr		Low Value : Qtr	
Benefits Paid (000):	\$150,790	\$730,482	25	\$273,731	2009.3	\$4,271	1972.2
Initial Claims:	70,059	313,251	28	111,442	2009.2	19,869	1973.2
First Payments:	37,326	178,856	22	67,247	2009.2	6,115	1972.2
Weeks Claimed:	835,483	3,981,814	18	1,407,272	2009.3	109,406	1972.3
Wks Compensated:	726,121	3,483,667	19	1,267,790	2009.3	82,840	1972.3
Exhaustions:	25,516	122,103	16	42,455	2009.3	1,807	1978.4
Exhaustion Rate:		57.2%	15	64.5%	2009.4	22.0%	1980.1
Average Duration:		19.5	20	19.9	2010.2	10.7	1980.1
AWBA:	\$212.51	\$214.03	49	\$222.18	2009.1	\$45.53	1971.2
As % of AWW:		26.2	51				
Avg. Benefits per First Payment:		\$4,084					

Financial Information

	Past 12 Months	Rank
State Revenues (000):	\$362,833	28
Total Wages (000)**:	\$24,125,432	22
Total Wages (Taxable Employers)(000)**:	\$19,162,448	20
Taxable Wages (000)**:	\$2,756,344	28
Avg. Weekly Wage**:	\$815.63	21
Avg. Tax Rate on Taxable Wages (%) **:	1.88	41
Avg. Tax Rate on Total Wages (%) **:	0.38	48
Calendar Yr Taxable Wage Base:	\$7,000	50
Trust Fund (TF) Balance (000):		
(Including Loans):	\$10,974	42
TF as % of Total Wages*:	0.01	46
Interest Earned (000):	\$0	39
Avg. High Cost Multiple +:	N.A.	24
High Cost Multiple +:	N.A.	24

Labor Force

	(Quarterly)	Past 12 Mos	Rank
IUR (%):	3.0	3.5	26
TUR (%):	9.5	10.0	14
Total Unemp. (000):	301.2	316.2	13
Insured Unemployed (000) ***			
Regular Programs:	68.0	80.5	16
All Programs:	159.8	180.4	16
Reciency Rates (%) ***			
Regular Programs:	23	25	44
All Programs:	53	57	35
Covered Emp. (000)**:	2,289	2,301	21
Civ. Labor Force (000):	3,174	3,176	15
Subj. Employers (000):	124	125	22

Extended Benefits

	(Quarterly)	Past 12 Months
Extended Benefits (000):	\$50,486	\$129,870
EB First Payments:	12,631	38,229
EB Weeks Claimed:	239,008	630,659
EB Exhaustions:	10,031	27,010

Loans

	Rank
Outstanding Loan Bal (000):	\$236,446 22
Loan per Cov Employee:	\$103 26
Loan as % of Total Wages*:	0.3014 26

* Based on extrapolated wages for the most recent 12 months.

** Wages and Covered Employment lag the rest of the Data Summary information by six months

*** Regular programs include State UI, UCFE and UCX.

+ Refers to most recent calendar year. Fourth and first quarter issues publish measure based on extrapolated wages. Second and third quarter issues publish measure based on actual wages.

See glossary for data definitions

Note: Blank cells appearing in any section of this report indicates that information is unavailable.

UI Data Summary for **Arkansas**

CYQ: 2010.4

Benefits

	(Quarterly)	Past 12 Months	Rank	High Value : Qtr		Low Value : Qtr	
Benefits Paid (000):	\$99,454	\$451,346	31	\$169,355	2009.2	\$3,532	1972.3
Initial Claims:	72,137	241,096	26	103,999	1981.4	20,162	1972.2
First Payments:	29,047	103,428	29	52,817	1975.1	7,104	1973.2
Weeks Claimed:	523,617	2,249,372	30	782,772	2009.2	116,813	1973.3
Wks Compensated:	389,774	1,732,565	31	635,735	2009.2	82,739	1973.3
Exhaustions:	10,885	55,155	33	19,034	2009.3	1,808	1973.4
Exhaustion Rate:		47.4%	40	48.9%	2010.1	21.6%	1986.2
Average Duration:		16.8	40	18.1	2010.2	9.8	1974.4
AWBA:	\$272.40	\$278.10	33	\$284.72	2009.2	\$39.54	1971.1
As % of AWW:		41.1	12				
Avg. Benefits per First Payment:		\$4,364					

Financial Information

	Past 12 Months	Rank
State Revenues (000):	\$359,575	29
Total Wages (000)**:	\$9,842,608	34
Total Wages (Taxable Employers)(000)**:	\$7,676,069	34
Taxable Wages (000)**:	\$2,969,284	36
Avg. Weekly Wage**:	\$676.30	48
Avg. Tax Rate on Taxable Wages (%) **:	2.96	17
Avg. Tax Rate on Total Wages (%) **:	1.02	14
Calendar Yr Taxable Wage Base:	\$12,000	25
Trust Fund (TF) Balance (000):		
(Including Loans):	\$51,800	29
TF as % of Total Wages*:	0.17	24
Interest Earned (000):	\$0	39
Avg. High Cost Multiple +:	N.A.	24
High Cost Multiple +:	N.A.	24

Labor Force

	(Quarterly)	Past 12 Mos	Rank
IUR (%):	3.8	4.0	10
TUR (%):	7.4	7.9	34
Total Unemp. (000):	100.5	106.6	33
Insured Unemployed (000) ***			
Regular Programs:	41.6	44.6	30
All Programs:	53.2	58.4	34
Reciency Rates (%) ***			
Regular Programs:	41	42	8
All Programs:	53	55	36
Covered Emp. (000)**:	1,122	1,107	32
Civ. Labor Force (000):	1,354	1,353	33
Subj. Employers (000):	68	68	33

Extended Benefits

	(Quarterly)	Past 12 Months
Extended Benefits (000):	\$0	\$0
EB First Payments:	0	5
EB Weeks Claimed:	0	44
EB Exhaustions:	1	1

Loans

	Rank
Outstanding Loan Bal (000):	\$330,853 21
Loan per Cov Employee:	\$295 18
Loan as % of Total Wages*:	1.0698 15

* Based on extrapolated wages for the most recent 12 months.

** Wages and Covered Employment lag the rest of the Data Summary information by six months

*** Regular programs include State UI, UCFE and UCX.

+ Refers to most recent calendar year. Fourth and first quarter issues publish measure based on extrapolated wages. Second and third quarter issues publish measure based on actual wages.

See glossary for data definitions

Note: Blank cells appearing in any section of this report indicates that information is unavailable.

UI Data Summary for **California**

CYQ: 2010.4

Benefits

	(Quarterly)	Past 12 Months	Rank	High Value : Qtr		Low Value : Qtr	
Benefits Paid (000):	\$1,859,289	\$8,664,564	1	\$2,960,486	2009.2	\$125,689	1973.3
Initial Claims:	954,738	3,871,954	1	1,073,146	1992.1	404,986	1973.2
First Payments:	353,498	1,523,765	1	532,050	2009.1	152,420	1973.2
Weeks Claimed:	7,642,332	34,487,491	1	10,868,329	2009.2	2,522,143	1973.3
Wks Compensated:	6,739,327	30,471,509	1	9,743,104	2009.2	2,184,142	1973.3
Exhaustions:	209,059	951,114	1	310,947	2009.3	48,106	1973.4
Exhaustion Rate:		58.7%	10	63.0%	2010.1	23.7%	1979.2
Average Duration:		20.0	14	21.5	2010.1	12.4	1979.1
AWBA:	\$293.68	\$301.45	23	\$317.59	2009.3	\$53.87	1971.3
As % of AWW:		30.3	41				
Avg. Benefits per First Payment:		\$5,686					

Financial Information

	Past 12 Months	Rank
State Revenues (000):	\$5,420,645	1
Total Wages (000)**:	\$179,999,721	1
Total Wages (Taxable Employers)(000)**:	\$139,984,373	1
Taxable Wages (000)**:	\$16,785,631	1
Avg. Weekly Wage**:	\$995.84	6
Avg. Tax Rate on Taxable Wages (%) **:	4.71	3
Avg. Tax Rate on Total Wages (%) **:	0.76	26
Calendar Yr Taxable Wage Base:	\$7,000	50
Trust Fund (TF) Balance (000):		
(Including Loans):	\$91,093	26
TF as % of Total Wages*:	0.02	43
Interest Earned (000):	\$0	39
Avg. High Cost Multiple +:	N.A.	24
High Cost Multiple +:	N.A.	24

Labor Force

	(Quarterly)	Past 12 Mos	Rank
IUR (%):	4.2	4.7	6
TUR (%):	12.3	12.4	3
Total Unemp. (000):	2,229.6	2,259.9	1
Insured Unemployed (000) ***			
Regular Programs:	595.1	665.2	1
All Programs:	1,318.4	1,431.3	1
Reciency Rates (%) ***			
Regular Programs:	27	29	30
All Programs:	59	63	23
Covered Emp. (000)**:	14,262	14,175	1
Civ. Labor Force (000):	18,129	18,176	1
Subj. Employers (000):	1,213	1,205	1

Extended Benefits

	(Quarterly)	Past 12 Months
Extended Benefits (000):	\$634,938	\$1,526,571
EB First Payments:	120,530	345,369
EB Weeks Claimed:	2,021,413	4,915,240
EB Exhaustions:	95,364	251,315

Loans

	Rank
Outstanding Loan Bal (000):	\$9,454,435 1
Loan per Cov Employee:	\$663 4
Loan as % of Total Wages*:	1.6380 10

* Based on extrapolated wages for the most recent 12 months.

** Wages and Covered Employment lag the rest of the Data Summary information by six months

*** Regular programs include State UI, UCFE and UCX.

+ Refers to most recent calendar year. Fourth and first quarter issues publish measure based on extrapolated wages. Second and third quarter issues publish measure based on actual wages.

See glossary for data definitions

Note: Blank cells appearing in any section of this report indicates that information is unavailable.

UI Data Summary for **Colorado**

CYQ: 2010.4

Benefits

	(Quarterly)	Past 12 Months	Rank	High Value : Qtr		Low Value : Qtr	
Benefits Paid (000):	\$182,159	\$915,574	20	\$291,781	2009.2	\$2,261	1972.3
Initial Claims:	57,940	223,363	30	75,813	2009.1	11,717	1972.3
First Payments:	34,492	153,222	24	55,037	2009.1	3,945	1972.3
Weeks Claimed:	718,995	3,386,823	24	1,001,220	2010.1	66,570	1972.3
Wks Compensated:	549,314	2,693,148	25	825,661	2010.1	37,409	1972.3
Exhaustions:	22,684	103,972	21	31,767	2009.3	828	1972.4
Exhaustion Rate:		60.9%	7	67.1%	2009.3	24.4%	1978.4
Average Duration:		17.6	35	17.9	2010.2	9.7	1974.1
AWBA:	\$338.15	\$346.53	7	\$364.83	2009.3	\$58.64	1971.3
As % of AWW:		38.7	23				
Avg. Benefits per First Payment:		\$5,975					

Financial Information

	Past 12 Months	Rank
State Revenues (000):	\$467,423	24
Total Wages (000)**:	\$23,653,507	21
Total Wages (Taxable Employers)(000)**:	\$19,583,838	19
Taxable Wages (000)**:	\$4,188,140	22
Avg. Weekly Wage**:	\$895.21	12
Avg. Tax Rate on Taxable Wages (%) **:	2.00	37
Avg. Tax Rate on Total Wages (%) **:	0.50	43
Calendar Yr Taxable Wage Base:	\$10,000	30
Trust Fund (TF) Balance (000):		
(Including Loans):	\$10,405	43
TF as % of Total Wages*:	0.01	49
Interest Earned (000):	\$0	39
Avg. High Cost Multiple +:	N.A.	24
High Cost Multiple +:	N.A.	24

Labor Force

	(Quarterly)	Past 12 Mos	Rank
IUR (%):	2.7	3.1	34
TUR (%):	8.7	8.9	25
Total Unemp. (000):	232.1	239.7	20
Insured Unemployed (000) ***			
Regular Programs:	56.6	65.3	24
All Programs:	134.4	143.5	21
Reciency Rates (%) ***			
Regular Programs:	24	27	38
All Programs:	58	60	26
Covered Emp. (000)**:	2,122	2,120	22
Civ. Labor Force (000):	2,670	2,687	22
Subj. Employers (000):	151	150	15

Extended Benefits

	(Quarterly)	Past 12 Months
Extended Benefits (000):	\$58,655	\$168,045
EB First Payments:	9,174	33,100
EB Weeks Claimed:	256,782	659,556
EB Exhaustions:	29	5,171

Loans

	Rank
Outstanding Loan Bal (000):	\$423,087 19
Loan per Cov Employee:	\$199 22
Loan as % of Total Wages*:	0.5176 22

* Based on extrapolated wages for the most recent 12 months.

** Wages and Covered Employment lag the rest of the Data Summary information by six months

*** Regular programs include State UI, UCFE and UCX.

+ Refers to most recent calendar year. Fourth and first quarter issues publish measure based on extrapolated wages. Second and third quarter issues publish measure based on actual wages.

See glossary for data definitions

Note: Blank cells appearing in any section of this report indicates that information is unavailable.

UI Data Summary for **Connecticut**

 CYQ: **2010.4**

Benefits

	(Quarterly)	Past 12 Months	Rank	High Value : Qtr		Low Value : Qtr	
Benefits Paid (000):	\$213,316	\$1,046,569	17	\$375,996	2009.2	\$23,568	1973.4
Initial Claims:	68,169	283,577	29	158,726	1975.1	33,893	1988.2
First Payments:	37,672	174,314	21	92,026	1975.1	14,892	1987.2
Weeks Claimed:	755,419	3,614,771	20	1,196,204	1975.1	194,676	1987.4
Wks Compensated:	728,133	3,538,398	17	1,253,180	2009.2	191,037	1987.4
Exhaustions:	19,635	87,456	23	33,301	2009.3	2,849	1980.1
Exhaustion Rate:		45.1%	44	48.9%	2009.4	12.3%	1979.2
Average Duration:		20.3	10	20.8	2010.2	10.2	1974.1
AWBA:	\$323.06	\$327.37	9	\$347.80	2009.2	\$61.34	1971.3
As % of AWW:		29.2	44				
Avg. Benefits per First Payment:		\$6,004					

Financial Information

	Past 12 Months	Rank
State Revenues (000):	\$714,690	17
Total Wages (000)**:	\$22,107,723	23
Total Wages (Taxable Employers)(000)**:	\$16,979,300	23
Taxable Wages (000)**:	\$4,149,512	24
Avg. Weekly Wage**:	\$1,122.78	3
Avg. Tax Rate on Taxable Wages (%) **:	3.42	10
Avg. Tax Rate on Total Wages (%) **:	0.88	17
Calendar Yr Taxable Wage Base:	\$15,000	18
Trust Fund (TF) Balance (000):		
(Including Loans):	\$39,709	31
TF as % of Total Wages*:	0.05	30
Interest Earned (000):	\$0	39
Avg. High Cost Multiple +:	N.A.	24
High Cost Multiple +:	N.A.	24

Labor Force

	(Quarterly)	Past 12 Mos	Rank
IUR (%):	3.6	4.3	13
TUR (%):	8.7	9.1	26
Total Unemp. (000):	163.9	173.4	29
Insured Unemployed (000) ***			
Regular Programs:	57.0	67.7	23
All Programs:	131.7	142.7	22
Reciency Rates (%) ***			
Regular Programs:	35	39	12
All Programs:	80	82	6
Covered Emp. (000)**:	1,585	1,575	27
Civ. Labor Force (000):	1,891	1,897	28
Subj. Employers (000):	97	97	27

Extended Benefits

	(Quarterly)	Past 12 Months
Extended Benefits (000):	\$91,298	\$288,721
EB First Payments:	22,581	77,876
EB Weeks Claimed:	233,960	611,418
EB Exhaustions:	10,543	33,410

Loans

	Rank
Outstanding Loan Bal (000):	\$522,712 18
Loan per Cov Employee:	\$330 17
Loan as % of Total Wages*:	0.7234 20

* Based on extrapolated wages for the most recent 12 months.

** Wages and Covered Employment lag the rest of the Data Summary information by six months

*** Regular programs include State UI, UCFE and UCX.

+ Refers to most recent calendar year. Fourth and first quarter issues publish measure based on extrapolated wages. Second and third quarter issues publish measure based on actual wages.

See glossary for data definitions

Note: Blank cells appearing in any section of this report indicates that information is unavailable.

UI Data Summary for **Delaware**

CYQ: **2010.4**

Benefits

	(Quarterly)	Past 12 Months	Rank	High Value : Qtr		Low Value : Qtr	
Benefits Paid (000):	\$30,075	\$150,553	48	\$56,797	2009.1	\$1,884	1972.4
Initial Claims:	18,126	68,745	48	27,988	1974.4	6,192	1973.2
First Payments:	6,181	27,466	49	17,084	1975.1	2,130	1987.2
Weeks Claimed:	146,064	724,560	48	237,585	2009.1	27,787	1987.4
Wks Compensated:	129,208	628,748	47	225,281	1975.1	26,548	1987.4
Exhaustions:	3,770	17,735	47	6,543	2009.3	256	1988.2
Exhaustion Rate:		58.3%	11	59.9%	2010.2	10.5%	1989.3
Average Duration:		22.9	2	23.3	2010.1	9.7	1986.1
AWBA:	\$241.15	\$247.37	43	\$265.48	2009.2	\$50.54	1971.4
As % of AWW:		27.0	49				
Avg. Benefits per First Payment:		\$5,481					

Financial Information

	Past 12 Months	Rank
State Revenues (000):	\$92,803	48
Total Wages (000)**:	\$4,462,950	46
Total Wages (Taxable Employers)(000)**:	\$3,521,286	45
Taxable Wages (000)**:	\$712,694	50
Avg. Weekly Wage**:	\$918.02	9
Avg. Tax Rate on Taxable Wages (%) **:	2.27	29
Avg. Tax Rate on Total Wages (%) **:	0.53	41
Calendar Yr Taxable Wage Base:	\$10,500	27
Trust Fund (TF) Balance (000):		
(Including Loans):	\$1,304	52
TF as % of Total Wages*:	0.01	52
Interest Earned (000):	\$0	39
Avg. High Cost Multiple +:	N.A.	24
High Cost Multiple +:	N.A.	24

Labor Force

	(Quarterly)	Past 12 Mos	Rank
IUR (%):	2.8	3.4	29
TUR (%):	8.1	8.5	28
Total Unemp. (000):	34.4	36.1	46
Insured Unemployed (000) ***			
Regular Programs:	11.1	13.4	47
All Programs:	23.0	25.9	45
Reciency Rates (%) ***			
Regular Programs:	32	37	19
All Programs:	67	72	16
Covered Emp. (000)**:	394	391	47
Civ. Labor Force (000):	422	426	47
Subj. Employers (000):	26	26	48

Extended Benefits

	(Quarterly)	Past 12 Months
Extended Benefits (000):	\$8,255	\$17,894
EB First Payments:	2,026	4,790
EB Weeks Claimed:	31,421	70,047
EB Exhaustions:	1,200	2,561

Loans

	Rank
Outstanding Loan Bal (000):	\$32,403 28
Loan per Cov Employee:	\$82 28
Loan as % of Total Wages*:	0.2205 28

* Based on extrapolated wages for the most recent 12 months.

** Wages and Covered Employment lag the rest of the Data Summary information by six months

*** Regular programs include State UI, UCFE and UCX.

+ Refers to most recent calendar year. Fourth and first quarter issues publish measure based on extrapolated wages. Second and third quarter issues publish measure based on actual wages.

See glossary for data definitions

Note: Blank cells appearing in any section of this report indicates that information is unavailable.

UI Data Summary for **District of Columbia**

CYQ: 2010.4

Benefits

	(Quarterly)	Past 12 Months	Rank	High Value : Qtr		Low Value : Qtr	
Benefits Paid (000):	\$42,372	\$176,061	44	\$58,915	2009.3	\$4,732	1971.4
Initial Claims:	11,929	47,651	51	15,303	1975.2	3,624	2005.4
First Payments:	7,251	28,355	48	11,131	1975.3	2,779	2003.2
Weeks Claimed:	153,512	646,756	47	217,880	2009.3	48,862	2006.2
Wks Compensated:	140,648	604,557	46	201,986	1975.3	66,758	2000.4
Exhaustions:	4,219	18,837	46	5,991	2009.4	1,310	1971.1
Exhaustion Rate:		62.3%	5	93.7%	2003.2	37.4%	1979.2
Average Duration:		21.3	6	32.6	2003.2	15.7	2001.4
AWBA:	\$294.70	\$298.92	22	\$314.28	2002.1	\$57.77	1971.1
As % of AWW:		21.7	53				
Avg. Benefits per First Payment:		\$6,209					

Financial Information

	Past 12 Months	Rank
State Revenues (000):	\$141,683	44
Total Wages (000)**:	\$8,381,224	36
Total Wages (Taxable Employers)(000)**:	\$6,741,231	35
Taxable Wages (000)**:	\$643,802	48
Avg. Weekly Wage**:	\$1,378.29	1
Avg. Tax Rate on Taxable Wages (%) **:	2.42	24
Avg. Tax Rate on Total Wages (%) **:	0.36	49
Calendar Yr Taxable Wage Base:	\$9,000	35
Trust Fund (TF) Balance (000):		
(Including Loans):	\$300,732	7
TF as % of Total Wages*:	1.07	9
Interest Earned (000):	\$3,199	7
Avg. High Cost Multiple +:	1.06	6
High Cost Multiple +:	0.58	6

Labor Force

	(Quarterly)	Past 12 Mos	Rank
IUR (%):	1.2	1.2	51
TUR (%):	9.6	9.9	13
Total Unemp. (000):	31.6	33.0	47
Insured Unemployed (000) ***			
Regular Programs:	5.7	5.6	49
All Programs:	12.1	12.0	48
Reciency Rates (%) ***			
Regular Programs:	18	17	51
All Programs:	38	36	50
Covered Emp. (000)**:	487	481	44
Civ. Labor Force (000):	330	334	51
Subj. Employers (000):	29	29	47

Extended Benefits

	(Quarterly)	Past 12 Months
Extended Benefits (000):	\$11,643	\$26,607
EB First Payments:	2,270	5,700
EB Weeks Claimed:	40,391	94,788
EB Exhaustions:	1,086	3,030

Loans

	Rank
Outstanding Loan Bal (000):	\$0 31
Loan per Cov Employee:	\$0 31
Loan as % of Total Wages*:	0.0000 31

* Based on extrapolated wages for the most recent 12 months.

** Wages and Covered Employment lag the rest of the Data Summary information by six months

*** Regular programs include State UI, UCFE and UCX.

+ Refers to most recent calendar year. Fourth and first quarter issues publish measure based on extrapolated wages. Second and third quarter issues publish measure based on actual wages.

See glossary for data definitions

Note: Blank cells appearing in any section of this report indicates that information is unavailable.

UI Data Summary for **Florida**

CYQ: 2010.4

Benefits

	(Quarterly)	Past 12 Months	Rank	High Value : Qtr		Low Value : Qtr	
Benefits Paid (000):	\$503,488	\$2,221,232	7	\$826,600	2009.3	\$7,873	1973.2
Initial Claims:	254,798	1,146,983	4	341,023	2009.1	47,634	1972.4
First Payments:	117,473	521,763	5	185,597	2009.1	13,559	1973.1
Weeks Claimed:	2,602,620	11,381,819	4	4,041,988	2009.3	290,942	1973.2
Wks Compensated:	2,242,389	9,789,361	4	3,540,158	2009.3	161,460	1973.1
Exhaustions:	88,031	388,402	2	137,398	2009.3	5,076	1973.2
Exhaustion Rate:		67.0%	2	70.7%	2009.4	33.8%	1984.3
Average Duration:		18.8	24	20.3	2010.1	10.5	1974.1
AWBA:	\$228.60	\$230.89	48	\$241.15	2008.1	\$38.12	1971.1
As % of AWW:		29.5	43				
Avg. Benefits per First Payment:		\$4,257					

Financial Information

	Past 12 Months	Rank
State Revenues (000):	\$1,254,876	10
Total Wages (000)**:	\$70,157,628	4
Total Wages (Taxable Employers)(000)**:	\$55,866,404	4
Taxable Wages (000)**:	\$9,185,991	8
Avg. Weekly Wage**:	\$781.68	24
Avg. Tax Rate on Taxable Wages (%) **:	2.24	31
Avg. Tax Rate on Total Wages (%) **:	0.47	45
Calendar Yr Taxable Wage Base:	\$7,000	50
Trust Fund (TF) Balance (000):		
(Including Loans):	\$102,956	23
TF as % of Total Wages*:	0.05	34
Interest Earned (000):	\$0	39
Avg. High Cost Multiple +:	N.A.	24
High Cost Multiple +:	N.A.	24

Labor Force

	(Quarterly)	Past 12 Mos	Rank
IUR (%):	3.0	3.3	24
TUR (%):	11.8	11.5	4
Total Unemp. (000):	1,092.0	1,064.7	2
Insured Unemployed (000) ***			
Regular Programs:	209.9	227.5	4
All Programs:	533.1	581.2	3
Reciency Rates (%) ***			
Regular Programs:	19	21	50
All Programs:	49	55	43
Covered Emp. (000)**:	6,988	6,965	4
Civ. Labor Force (000):	9,258	9,224	4
Subj. Employers (000):	457	460	3

Extended Benefits

	(Quarterly)	Past 12 Months
Extended Benefits (000):	\$183,983	\$465,914
EB First Payments:	48,047	129,478
EB Weeks Claimed:	811,056	2,285,837
EB Exhaustions:	40,321	100,990

Loans

	Rank
Outstanding Loan Bal (000):	\$1,957,500 8
Loan per Cov Employee:	\$280 20
Loan as % of Total Wages*:	0.8560 18

* Based on extrapolated wages for the most recent 12 months.

** Wages and Covered Employment lag the rest of the Data Summary information by six months

*** Regular programs include State UI, UCFE and UCX.

+ Refers to most recent calendar year. Fourth and first quarter issues publish measure based on extrapolated wages. Second and third quarter issues publish measure based on actual wages.

See glossary for data definitions

Note: Blank cells appearing in any section of this report indicates that information is unavailable.

UI Data Summary for Georgia

CYQ: 2010.4

Benefits

	(Quarterly)	Past 12 Months	Rank	High Value : Qtr		Low Value : Qtr	
Benefits Paid (000):	\$253,817	\$1,165,636	14	\$463,837	2009.2	\$6,287	1972.4
Initial Claims:	200,468	809,143	11	301,615	2009.1	24,591	1973.2
First Payments:	71,445	299,963	11	157,459	1975.1	9,055	1973.2
Weeks Claimed:	1,443,578	5,893,730	11	2,109,707	2009.3	182,945	1972.4
Wks Compensated:	982,003	4,407,045	14	1,686,847	2009.1	137,491	1972.4
Exhaustions:	40,430	182,704	10	65,604	2009.3	4,870	1972.4
Exhaustion Rate:		54.0%	21	57.7%	2009.4	19.6%	1990.3
Average Duration:		14.7	51	16.0	2010.1	8.2	1986.2
AWBA:	\$268.25	\$273.22	37	\$285.26	2009.2	\$43.29	1971.1
As % of AWW:		33.4	37				
Avg. Benefits per First Payment:		\$3,886					

Financial Information

	Past 12 Months	Rank
State Revenues (000):	\$687,229	19
Total Wages (000)**:	\$37,902,502	12
Total Wages (Taxable Employers)(000)**:	\$31,218,180	11
Taxable Wages (000)**:	\$5,756,989	14
Avg. Weekly Wage**:	\$818.48	20
Avg. Tax Rate on Taxable Wages (%) **:	2.10	34
Avg. Tax Rate on Total Wages (%) **:	0.48	44
Calendar Yr Taxable Wage Base:	\$8,500	39
Trust Fund (TF) Balance (000):		
(Including Loans):	\$19,887	38
TF as % of Total Wages*:	0.02	44
Interest Earned (000):	\$0	39
Avg. High Cost Multiple +:	N.A.	24
High Cost Multiple +:	N.A.	24

Labor Force

	(Quarterly)	Past 12 Mos	Rank
IUR (%):	3.3	3.3	20
TUR (%):	10.2	10.2	9
Total Unemp. (000):	477.7	480.0	9
Insured Unemployed (000) ***			
Regular Programs:	118.5	119.9	10
All Programs:	362.5	401.8	8
Reciency Rates (%) ***			
Regular Programs:	25	25	37
All Programs:	76	84	9
Covered Emp. (000)**:	3,656	3,645	11
Civ. Labor Force (000):	4,686	4,694	9
Subj. Employers (000):	207	208	10

Extended Benefits

	(Quarterly)	Past 12 Months
Extended Benefits (000):	\$87,262	\$224,889
EB First Payments:	21,935	70,200
EB Weeks Claimed:	333,420	929,788
EB Exhaustions:	19,681	52,914

Loans

	Rank
Outstanding Loan Bal (000):	\$532,500 17
Loan per Cov Employee:	\$146 23
Loan as % of Total Wages*:	0.4152 24

* Based on extrapolated wages for the most recent 12 months.

** Wages and Covered Employment lag the rest of the Data Summary information by six months

*** Regular programs include State UI, UCFE and UCX.

+ Refers to most recent calendar year. Fourth and first quarter issues publish measure based on extrapolated wages. Second and third quarter issues publish measure based on actual wages.

See glossary for data definitions

Note: Blank cells appearing in any section of this report indicates that information is unavailable.

UI Data Summary for **Hawaii**

CYQ: **2010.4**

Benefits

	(Quarterly)	Past 12 Months	Rank	High Value : Qtr		Low Value : Qtr	
Benefits Paid (000):	\$73,514	\$328,139	36	\$103,698	2009.2	\$6,426	1972.3
Initial Claims:	26,955	115,597	42	35,479	2001.4	10,200	1990.3
First Payments:	8,893	41,236	45	18,185	2001.4	4,105	1989.4
Weeks Claimed:	204,289	915,266	42	281,020	2009.2	57,623	1989.4
Wks Compensated:	182,877	812,202	41	251,310	2009.2	51,372	1989.4
Exhaustions:	4,696	21,378	44	6,682	2009.3	728	1989.4
Exhaustion Rate:		46.8%	41	47.9%	2010.2	16.3%	1990.1
Average Duration:		19.7	18	19.9	2010.1	11.1	1991.1
AWBA:	\$412.47	\$416.32	1	\$425.82	2009.2	\$63.43	1971.1
As % of AWW:		54.3	1				
Avg. Benefits per First Payment:		\$7,958					

Financial Information

	Past 12 Months	Rank
State Revenues (000):	\$186,653	39
Total Wages (000)**:	\$5,350,070	42
Total Wages (Taxable Employers)(000)**:	\$3,918,151	41
Taxable Wages (000)**:	\$3,109,611	37
Avg. Weekly Wage**:	\$766.36	30
Avg. Tax Rate on Taxable Wages (%) **:	1.59	44
Avg. Tax Rate on Total Wages (%) **:	0.78	25
Calendar Yr Taxable Wage Base:	\$34,900	2
Trust Fund (TF) Balance (000):		
(Including Loans):	\$2,823	49
TF as % of Total Wages*:	0.02	42
Interest Earned (000):	\$0	39
Avg. High Cost Multiple +:	N.A.	24
High Cost Multiple +:	N.A.	24

Labor Force

	(Quarterly)	Past 12 Mos	Rank
IUR (%):	2.9	3.2	27
TUR (%):	6.2	6.6	46
Total Unemp. (000):	39.0	41.6	44
Insured Unemployed (000) ***			
Regular Programs:	16.2	17.8	41
All Programs:	26.8	30.0	43
Reciency Rates (%) ***			
Regular Programs:	41	43	7
All Programs:	69	72	14
Covered Emp. (000)**:	550	551	43
Civ. Labor Force (000):	627	629	43
Subj. Employers (000):	31	31	46

Extended Benefits

	(Quarterly)	Past 12 Months
Extended Benefits (000):	\$0	\$0
EB First Payments:	0	0
EB Weeks Claimed:	0	0
EB Exhaustions:	0	0

Loans

	Rank
Outstanding Loan Bal (000):	\$14,642 30
Loan per Cov Employee:	\$27 30
Loan as % of Total Wages*:	0.0900 30

* Based on extrapolated wages for the most recent 12 months.

** Wages and Covered Employment lag the rest of the Data Summary information by six months

*** Regular programs include State UI, UCFE and UCX.

+ Refers to most recent calendar year. Fourth and first quarter issues publish measure based on extrapolated wages. Second and third quarter issues publish measure based on actual wages.

See glossary for data definitions

Note: Blank cells appearing in any section of this report indicates that information is unavailable.

UI Data Summary for **Idaho**

CYQ: **2010.4**

Benefits

	(Quarterly)	Past 12 Months	Rank	High Value : Qtr		Low Value : Qtr	
Benefits Paid (000):	\$54,834	\$281,030	40	\$136,515	2009.1	\$1,990	1972.4
Initial Claims:	51,728	167,070	32	63,591	2008.4	8,753	1972.3
First Payments:	19,932	75,050	34	35,438	2009.1	3,784	1971.2
Weeks Claimed:	279,117	1,337,433	38	572,603	2009.1	63,956	1972.4
Wks Compensated:	237,560	1,181,266	38	511,439	2009.1	40,048	1972.4
Exhaustions:	7,910	41,762	38	14,479	2009.2	920	1972.4
Exhaustion Rate:		51.5%	30	52.6%	1983.2	22.0%	1979.3
Average Duration:		15.7	47	17.1	2010.1	10.1	1978.4
AWBA:	\$248.04	\$255.47	41	\$279.83	2009.1	\$45.31	1971.3
As % of AWW:		39.3	21				
Avg. Benefits per First Payment:		\$3,745					

Financial Information

	Past 12 Months	Rank
State Revenues (000):	\$284,710	32
Total Wages (000)**:	\$4,948,699	44
Total Wages (Taxable Employers)(000)**:	\$3,859,347	42
Taxable Wages (000)**:	\$3,064,008	35
Avg. Weekly Wage**:	\$649.51	49
Avg. Tax Rate on Taxable Wages (%) **:	2.21	32
Avg. Tax Rate on Total Wages (%) **:	1.51	1
Calendar Yr Taxable Wage Base:	\$33,300	4
Trust Fund (TF) Balance (000):		
(Including Loans):	\$105,405	21
TF as % of Total Wages*:	0.67	16
Interest Earned (000):	\$0	39
Avg. High Cost Multiple +:	N.A.	24
High Cost Multiple +:	N.A.	24

Labor Force

	(Quarterly)	Past 12 Mos	Rank
IUR (%):	3.8	4.5	9
TUR (%):	9.4	9.3	15
Total Unemp. (000):	71.1	70.6	38
Insured Unemployed (000) ***			
Regular Programs:	22.5	26.9	38
All Programs:	41.0	48.8	38
Reciency Rates (%) ***			
Regular Programs:	32	38	21
All Programs:	58	69	27
Covered Emp. (000)**:	595	594	41
Civ. Labor Force (000):	757	758	40
Subj. Employers (000):	48	48	39

Extended Benefits

	(Quarterly)	Past 12 Months
Extended Benefits (000):	\$8,067	\$25,510
EB First Payments:	2,152	7,873
EB Weeks Claimed:	30,322	98,686
EB Exhaustions:	1,810	4,582

Loans

	Rank
Outstanding Loan Bal (000):	\$202,402 24
Loan per Cov Employee:	\$340 16
Loan as % of Total Wages*:	1.2775 13

* Based on extrapolated wages for the most recent 12 months.

** Wages and Covered Employment lag the rest of the Data Summary information by six months

*** Regular programs include State UI, UCFE and UCX.

+ Refers to most recent calendar year. Fourth and first quarter issues publish measure based on extrapolated wages. Second and third quarter issues publish measure based on actual wages.

See glossary for data definitions

Note: Blank cells appearing in any section of this report indicates that information is unavailable.

UI Data Summary for **Illinois**

 CYQ: **2010.4**

Benefits

	(Quarterly)	Past 12 Months	Rank	High Value : Qtr		Low Value : Qtr	
Benefits Paid (000):	\$605,344	\$3,193,065	6	\$1,309,693	2009.2	\$33,425	1973.3
Initial Claims:	239,000	887,639	6	366,762	1982.1	111,476	1973.2
First Payments:	104,102	475,822	6	225,814	2009.1	45,457	1973.4
Weeks Claimed:	2,554,188	11,752,579	5	4,118,663	2009.2	714,895	1973.4
Wks Compensated:	1,927,825	10,156,789	6	3,821,063	2009.2	563,654	1973.4
Exhaustions:	61,169	286,600	6	118,250	2009.3	12,720	1972.4
Exhaustion Rate:		52.1%	29	56.3%	2010.1	26.9%	2000.4
Average Duration:		21.4	5	22.4	2010.2	11.7	1975.1
AWBA:	\$316.38	\$316.69	14	\$345.81	2009.2	\$51.05	1971.3
As % of AWW:		34.1	34				
Avg. Benefits per First Payment:		\$6,711					

Financial Information

	Past 12 Months	Rank
State Revenues (000):	\$2,021,750	6
Total Wages (000)**:	\$63,884,313	5
Total Wages (Taxable Employers)(000)**:	\$50,338,140	5
Taxable Wages (000)**:	\$12,739,427	6
Avg. Weekly Wage**:	\$929.94	8
Avg. Tax Rate on Taxable Wages (%) **:	3.13	15
Avg. Tax Rate on Total Wages (%) **:	0.83	22
Calendar Yr Taxable Wage Base:	\$12,520	22
Trust Fund (TF) Balance (000):		
(Including Loans):	\$1,509	50
TF as % of Total Wages*:	0.00	53
Interest Earned (000):	\$0	39
Avg. High Cost Multiple +:	N.A.	24
High Cost Multiple +:	N.A.	24

Labor Force

	(Quarterly)	Past 12 Mos	Rank
IUR (%):	3.6	4.1	14
TUR (%):	9.0	10.3	22
Total Unemp. (000):	595.5	681.3	5
Insured Unemployed (000) ***			
Regular Programs:	194.7	222.7	6
All Programs:	411.9	461.8	6
Reciency Rates (%) ***			
Regular Programs:	33	33	17
All Programs:	69	68	13
Covered Emp. (000)**:	5,440	5,403	5
Civ. Labor Force (000):	6,649	6,646	5
Subj. Employers (000):	300	300	5

Extended Benefits

	(Quarterly)	Past 12 Months
Extended Benefits (000):	\$176,191	\$411,934
EB First Payments:	29,481	85,527
EB Weeks Claimed:	544,826	1,284,436
EB Exhaustions:	18,918	46,286

Loans

	Rank
Outstanding Loan Bal (000):	\$2,375,751 6
Loan per Cov Employee:	\$437 12
Loan as % of Total Wages*:	1.1370 14

* Based on extrapolated wages for the most recent 12 months.

** Wages and Covered Employment lag the rest of the Data Summary information by six months

*** Regular programs include State UI, UCFE and UCX.

+ Refers to most recent calendar year. Fourth and first quarter issues publish measure based on extrapolated wages. Second and third quarter issues publish measure based on actual wages.

See glossary for data definitions

Note: Blank cells appearing in any section of this report indicates that information is unavailable.

UI Data Summary for **Indiana**

CYQ: **2010.4**

Benefits

	(Quarterly)	Past 12 Months	Rank	High Value : Qtr		Low Value : Qtr	
Benefits Paid (000):	\$207,364	\$1,016,508	18	\$567,089	2009.1	\$8,800	1973.3
Initial Claims:	136,643	453,168	16	246,275	2008.4	42,913	1994.2
First Payments:	51,431	222,391	15	145,270	2009.1	14,237	1976.3
Weeks Claimed:	838,803	4,057,194	17	2,096,749	2009.1	234,695	1973.3
Wks Compensated:	742,376	3,578,627	16	1,898,328	2009.1	199,188	1973.4
Exhaustions:	28,807	136,438	13	65,129	2009.2	4,727	1988.4
Exhaustion Rate:		54.2%	20	60.7%	2009.2	20.6%	1990.3
Average Duration:		16.1	46	18.6	2010.1	8.6	1974.1
AWBA:	\$291.09	\$295.00	28	\$310.74	2009.2	\$40.32	1971.2
As % of AWW:		40.1	14				
Avg. Benefits per First Payment:		\$4,571					

Financial Information

	Past 12 Months	Rank
State Revenues (000):	\$587,895	21
Total Wages (000)**:	\$25,310,680	17
Total Wages (Taxable Employers)(000)**:	\$20,154,185	18
Taxable Wages (000)**:	\$3,201,565	26
Avg. Weekly Wage**:	\$735.36	35
Avg. Tax Rate on Taxable Wages (%) **:	2.89	19
Avg. Tax Rate on Total Wages (%) **:	0.63	39
Calendar Yr Taxable Wage Base:	\$7,000	50
Trust Fund (TF) Balance (000):		
(Including Loans):	\$18,148	41
TF as % of Total Wages*:	0.02	36
Interest Earned (000):	\$0	39
Avg. High Cost Multiple +:	N.A.	24
High Cost Multiple +:	N.A.	24

Labor Force

	(Quarterly)	Past 12 Mos	Rank
IUR (%):	2.5	3.0	37
TUR (%):	9.2	10.2	17
Total Unemp. (000):	288.4	319.6	14
Insured Unemployed (000) ***			
Regular Programs:	67.4	80.4	17
All Programs:	165.5	197.7	15
Reciency Rates (%) ***			
Regular Programs:	23	25	42
All Programs:	57	62	28
Covered Emp. (000)**:	2,684	2,653	15
Civ. Labor Force (000):	3,121	3,142	16
Subj. Employers (000):	127	129	21

Extended Benefits

	(Quarterly)	Past 12 Months
Extended Benefits (000):	\$65,388	\$200,697
EB First Payments:	11,672	43,547
EB Weeks Claimed:	224,244	761,043
EB Exhaustions:	12,751	38,097

Loans

	Rank
Outstanding Loan Bal (000):	\$1,955,480 9
Loan per Cov Employee:	\$729 2
Loan as % of Total Wages*:	2.4096 2

* Based on extrapolated wages for the most recent 12 months.

** Wages and Covered Employment lag the rest of the Data Summary information by six months

*** Regular programs include State UI, UCFE and UCX.

+ Refers to most recent calendar year. Fourth and first quarter issues publish measure based on extrapolated wages. Second and third quarter issues publish measure based on actual wages.

See glossary for data definitions

Note: Blank cells appearing in any section of this report indicates that information is unavailable.

UI Data Summary for Iowa

CYQ: 2010.4

Benefits

	(Quarterly)	Past 12 Months	Rank	High Value : Qtr		Low Value : Qtr	
Benefits Paid (000):	\$113,352	\$586,858	28	\$229,591	2009.1	\$4,418	1972.4
Initial Claims:	75,154	262,046	25	115,881	2009.1	15,337	1974.2
First Payments:	29,697	125,564	28	63,848	1982.1	6,856	1974.2
Weeks Claimed:	427,540	2,125,550	32	840,777	2009.1	104,815	1974.3
Wks Compensated:	378,110	1,920,298	32	743,871	2009.1	79,526	1973.4
Exhaustions:	11,241	55,538	32	19,632	2009.3	1,761	1973.4
Exhaustion Rate:		38.3%	49	46.5%	1975.3	13.6%	1979.4
Average Duration:		15.3	49	16.5	2010.1	10.6	1999.2
AWBA:	\$316.77	\$321.39	13	\$327.97	2010.1	\$52.22	1971.3
As % of AWW:		44.9	3				
Avg. Benefits per First Payment:		\$4,674					

Financial Information

	Past 12 Months	Rank
State Revenues (000):	\$511,768	23
Total Wages (000)**:	\$13,056,124	29
Total Wages (Taxable Employers)(000)**:	\$9,962,405	31
Taxable Wages (000)**:	\$6,710,213	20
Avg. Weekly Wage**:	\$715.26	40
Avg. Tax Rate on Taxable Wages (%) **:	2.04	35
Avg. Tax Rate on Total Wages (%) **:	1.11	8
Calendar Yr Taxable Wage Base:	\$24,700	12
Trust Fund (TF) Balance (000):		
(Including Loans):	\$310,023	6
TF as % of Total Wages*:	0.76	15
Interest Earned (000):	\$3,374	6
Avg. High Cost Multiple +:	0.52	16
High Cost Multiple +:	0.29	16

Labor Force

	(Quarterly)	Past 12 Mos	Rank
IUR (%):	2.3	2.9	43
TUR (%):	5.9	6.1	47
Total Unemp. (000):	98.9	102.6	34
Insured Unemployed (000) ***			
Regular Programs:	33.0	40.7	33
All Programs:	58.2	70.0	32
Reciency Rates (%) ***			
Regular Programs:	33	40	16
All Programs:	59	68	25
Covered Emp. (000)**:	1,427	1,415	30
Civ. Labor Force (000):	1,675	1,671	30
Subj. Employers (000):	73	73	31

Extended Benefits

	(Quarterly)	Past 12 Months
Extended Benefits (000):	\$0	\$0
EB First Payments:	0	0
EB Weeks Claimed:	0	0
EB Exhaustions:	0	0

Loans

	Rank
Outstanding Loan Bal (000):	\$0 31
Loan per Cov Employee:	\$0 31
Loan as % of Total Wages*:	0.0000 31

* Based on extrapolated wages for the most recent 12 months.

** Wages and Covered Employment lag the rest of the Data Summary information by six months

*** Regular programs include State UI, UCFE and UCX.

+ Refers to most recent calendar year. Fourth and first quarter issues publish measure based on extrapolated wages. Second and third quarter issues publish measure based on actual wages.

See glossary for data definitions

Note: Blank cells appearing in any section of this report indicates that information is unavailable.

UI Data Summary for **Kansas**

CYQ: 2010.4

Benefits

	(Quarterly)	Past 12 Months	Rank	High Value : Qtr		Low Value : Qtr	
Benefits Paid (000):	\$107,644	\$521,945	29	\$216,603	2009.2	\$3,919	1973.3
Initial Claims:	53,030	198,226	31	77,861	2009.4	12,849	1973.2
First Payments:	21,939	91,193	32	37,986	2009.1	6,024	1973.2
Weeks Claimed:	395,411	1,891,515	33	678,118	2009.2	94,003	1973.3
Wks Compensated:	345,242	1,635,359	33	603,990	2009.2	74,015	1973.3
Exhaustions:	12,076	56,014	31	19,641	2009.4	1,499	1973.4
Exhaustion Rate:		53.9%	22	58.8%	2009.4	20.6%	1980.1
Average Duration:		17.9	32	19.4	2010.2	10.7	1974.1
AWBA:	\$319.01	\$326.27	10	\$366.51	2009.2	\$50.55	1971.3
As % of AWW:		44.7	4				
Avg. Benefits per First Payment:		\$5,724					

Financial Information

	Past 12 Months	Rank
State Revenues (000):	\$365,794	27
Total Wages (000)**:	\$12,036,426	31
Total Wages (Taxable Employers)(000)**:	\$10,927,575	29
Taxable Wages (000)**:	\$3,293,876	29
Avg. Weekly Wage**:	\$729.58	37
Avg. Tax Rate on Taxable Wages (%) **:	2.29	27
Avg. Tax Rate on Total Wages (%) **:	0.76	27
Calendar Yr Taxable Wage Base:	\$8,000	43
Trust Fund (TF) Balance (000):		
(Including Loans):	\$43,444	30
TF as % of Total Wages*:	0.10	26
Interest Earned (000):	\$44	24
Avg. High Cost Multiple +:	N.A.	24
High Cost Multiple +:	N.A.	24

Labor Force

	(Quarterly)	Past 12 Mos	Rank
IUR (%):	2.5	2.9	39
TUR (%):	6.6	7.0	43
Total Unemp. (000):	98.3	105.8	36
Insured Unemployed (000) ***			
Regular Programs:	31.4	37.1	34
All Programs:	58.0	65.3	33
Reciency Rates (%) ***			
Regular Programs:	32	35	20
All Programs:	59	62	24
Covered Emp. (000)**:	1,279	1,272	31
Civ. Labor Force (000):	1,498	1,502	31
Subj. Employers (000):	70	70	32

Extended Benefits

	(Quarterly)	Past 12 Months
Extended Benefits (000):	\$17,959	\$46,308
EB First Payments:	3,772	14,383
EB Weeks Claimed:	38,141	115,004
EB Exhaustions:	6,529	11,737

Loans

	Rank
Outstanding Loan Bal (000):	\$88,159 26
Loan per Cov Employee:	\$69 29
Loan as % of Total Wages*:	0.2005 29

* Based on extrapolated wages for the most recent 12 months.

** Wages and Covered Employment lag the rest of the Data Summary information by six months

*** Regular programs include State UI, UCFE and UCX.

+ Refers to most recent calendar year. Fourth and first quarter issues publish measure based on extrapolated wages. Second and third quarter issues publish measure based on actual wages.

See glossary for data definitions

Note: Blank cells appearing in any section of this report indicates that information is unavailable.

UI Data Summary for **Kentucky**

CYQ: 2010.4

Benefits

	(Quarterly)	Past 12 Months	Rank	High Value : Qtr		Low Value : Qtr	
Benefits Paid (000):	\$133,990	\$690,085	26	\$313,555	2009.1	\$7,436	1972.3
Initial Claims:	90,266	338,722	21	170,954	1994.1	25,015	1973.2
First Payments:	24,939	134,738	31	110,332	1994.1	11,096	1972.2
Weeks Claimed:	510,834	2,560,587	31	1,093,522	2009.1	169,408	1973.3
Wks Compensated:	490,140	2,484,378	30	1,075,649	2009.1	147,330	1973.3
Exhaustions:	12,670	63,232	30	27,544	2009.3	2,882	1972.4
Exhaustion Rate:		41.9%	47	43.3%	2010.2	12.8%	1995.2
Average Duration:		18.4	27	20.4	2010.1	8.9	1994.1
AWBA:	\$284.77	\$288.80	31	\$311.83	2009.2	\$46.26	1971.2
As % of AWW:		39.7	16				
Avg. Benefits per First Payment:		\$5,122					

Financial Information

	Past 12 Months	Rank
State Revenues (000):	\$459,779	25
Total Wages (000)**:	\$16,073,418	28
Total Wages (Taxable Employers)(000)**:	\$12,124,405	27
Taxable Wages (000)**:	\$2,394,455	32
Avg. Weekly Wage**:	\$727.11	38
Avg. Tax Rate on Taxable Wages (%) **:	3.43	9
Avg. Tax Rate on Total Wages (%) **:	0.85	19
Calendar Yr Taxable Wage Base:	\$8,000	43
Trust Fund (TF) Balance (000):		
(Including Loans):	\$9,144	44
TF as % of Total Wages*:	0.02	39
Interest Earned (000):	\$0	39
Avg. High Cost Multiple +:	N.A.	24
High Cost Multiple +:	N.A.	24

Labor Force

	(Quarterly)	Past 12 Mos	Rank
IUR (%):	2.5	3.1	38
TUR (%):	9.8	10.5	11
Total Unemp. (000):	204.5	218.0	23
Insured Unemployed (000) ***			
Regular Programs:	41.0	50.8	31
All Programs:	96.3	111.5	28
Reciency Rates (%) ***			
Regular Programs:	20	23	49
All Programs:	47	51	44
Covered Emp. (000)**:	1,682	1,662	26
Civ. Labor Force (000):	2,085	2,084	26
Subj. Employers (000):	84	84	29

Extended Benefits

	(Quarterly)	Past 12 Months
Extended Benefits (000):	\$45,449	\$94,355
EB First Payments:	6,495	18,337
EB Weeks Claimed:	147,328	310,222
EB Exhaustions:	5,103	9,543

Loans

	Rank
Outstanding Loan Bal (000):	\$804,700 13
Loan per Cov Employee:	\$478 10
Loan as % of Total Wages*:	1.6456 9

* Based on extrapolated wages for the most recent 12 months.

** Wages and Covered Employment lag the rest of the Data Summary information by six months

*** Regular programs include State UI, UCFE and UCX.

+ Refers to most recent calendar year. Fourth and first quarter issues publish measure based on extrapolated wages. Second and third quarter issues publish measure based on actual wages.

See glossary for data definitions

Note: Blank cells appearing in any section of this report indicates that information is unavailable.

UI Data Summary for **Louisiana**

CYQ: **2010.4**

Benefits

	(Quarterly)	Past 12 Months	Rank	High Value : Qtr		Low Value : Qtr	
Benefits Paid (000):	\$94,558	\$463,764	32	\$472,654	2005.4	\$11,866	1972.3
Initial Claims:	50,360	215,992	33	228,256	2005.3	30,169	2007.3
First Payments:	26,264	107,389	30	144,081	2005.3	12,250	2007.2
Weeks Claimed:	613,537	2,777,961	27	2,775,877	2005.4	243,812	2007.4
Wks Compensated:	491,694	2,242,950	29	2,477,795	2005.4	195,524	2007.2
Exhaustions:	14,453	67,095	28	70,297	2006.1	4,215	1998.4
Exhaustion Rate:		53.3%	23	63.1%	1987.1	19.5%	2007.1
Average Duration:		20.9	8	27.1	2006.4	7.9	2005.3
AWBA:	\$194.29	\$208.90	51	\$233.20	2009.3	\$45.89	1971.1
As % of AWW:		27.0	47				
Avg. Benefits per First Payment:		\$4,319					

Financial Information

	Past 12 Months	Rank
State Revenues (000):	\$209,127	36
Total Wages (000)**:	\$17,905,836	24
Total Wages (Taxable Employers)(000)**:	\$13,989,426	24
Taxable Wages (000)**:	\$2,532,539	30
Avg. Weekly Wage**:	\$773.79	28
Avg. Tax Rate on Taxable Wages (%) **:	1.57	45
Avg. Tax Rate on Total Wages (%) **:	0.36	51
Calendar Yr Taxable Wage Base:	\$7,700	46
Trust Fund (TF) Balance (000):		
(Including Loans):	\$895,643	3
TF as % of Total Wages*:	1.58	6
Interest Earned (000):	\$9,570	3
Avg. High Cost Multiple +:	1.6	1
High Cost Multiple +:	0.51	10

Labor Force

	(Quarterly)	Past 12 Mos	Rank
IUR (%):	2.8	3.1	30
TUR (%):	7.3	7.5	35
Total Unemp. (000):	152.9	155.2	30
Insured Unemployed (000) ***			
Regular Programs:	49.9	55.8	27
All Programs:	65.2	73.2	30
Reciency Rates (%) ***			
Regular Programs:	33	36	18
All Programs:	43	47	49
Covered Emp. (000)**:	1,809	1,801	23
Civ. Labor Force (000):	2,086	2,082	25
Subj. Employers (000):	104	104	25

Extended Benefits

	(Quarterly)	Past 12 Months
Extended Benefits (000):	\$0	\$0
EB First Payments:	0	0
EB Weeks Claimed:	0	0
EB Exhaustions:	0	0

Loans

	Rank
Outstanding Loan Bal (000):	\$0 31
Loan per Cov Employee:	\$0 31
Loan as % of Total Wages*:	0.0000 31

* Based on extrapolated wages for the most recent 12 months.

** Wages and Covered Employment lag the rest of the Data Summary information by six months

*** Regular programs include State UI, UCFE and UCX.

+ Refers to most recent calendar year. Fourth and first quarter issues publish measure based on extrapolated wages. Second and third quarter issues publish measure based on actual wages.

See glossary for data definitions

Note: Blank cells appearing in any section of this report indicates that information is unavailable.

UI Data Summary for **Maine**

CYQ: 2010.4

Benefits

	(Quarterly)	Past 12 Months	Rank	High Value : Qtr		Low Value : Qtr	
Benefits Paid (000):	\$40,995	\$210,131	45	\$81,223	2009.1	\$4,084	1973.4
Initial Claims:	29,350	98,445	40	55,565	1991.1	10,710	2007.3
First Payments:	11,482	47,540	41	35,621	1975.1	4,372	2000.3
Weeks Claimed:	188,113	920,628	44	443,727	1991.1	83,258	2000.3
Wks Compensated:	157,426	792,817	45	385,026	1991.1	65,703	2000.3
Exhaustions:	4,898	23,175	43	10,511	1975.2	1,314	1988.4
Exhaustion Rate:		47.6%	39	64.5%	1983.3	19.9%	1988.3
Average Duration:		16.7	41	18.7	1983.3	10.1	1980.1
AWBA:	\$270.22	\$274.00	35	\$285.96	2009.3	\$46.43	1971.3
As % of AWW:		39.4	20				
Avg. Benefits per First Payment:		\$4,420					

Financial Information

	Past 12 Months	Rank
State Revenues (000):	\$148,266	43
Total Wages (000)**:	\$5,012,006	43
Total Wages (Taxable Employers)(000)**:	\$3,572,731	44
Taxable Wages (000)**:	\$1,286,299	45
Avg. Weekly Wage**:	\$696.38	46
Avg. Tax Rate on Taxable Wages (%) **:	2.39	25
Avg. Tax Rate on Total Wages (%) **:	0.84	21
Calendar Yr Taxable Wage Base:	\$12,000	25
Trust Fund (TF) Balance (000):		
(Including Loans):	\$278,708	10
TF as % of Total Wages*:	1.89	4
Interest Earned (000):	\$2,988	10
Avg. High Cost Multiple +:	0.99	9
High Cost Multiple +:	0.67	1

Labor Force

	(Quarterly)	Past 12 Mos	Rank
IUR (%):	2.7	3.2	33
TUR (%):	7.3	7.9	36
Total Unemp. (000):	50.9	55.3	41
Insured Unemployed (000) ***			
Regular Programs:	15.1	18.3	43
All Programs:	27.7	31.8	42
Reciency Rates (%) ***			
Regular Programs:	30	33	26
All Programs:	54	58	31
Covered Emp. (000)**:	563	563	42
Civ. Labor Force (000):	696	697	42
Subj. Employers (000):	42	41	41

Extended Benefits

	(Quarterly)	Past 12 Months
Extended Benefits (000):	\$6,993	\$23,191
EB First Payments:	1,700	8,351
EB Weeks Claimed:	25,925	85,789
EB Exhaustions:	2,135	4,996

Loans

	Rank
Outstanding Loan Bal (000):	\$0 31
Loan per Cov Employee:	\$0 31
Loan as % of Total Wages*:	0.0000 31

* Based on extrapolated wages for the most recent 12 months.

** Wages and Covered Employment lag the rest of the Data Summary information by six months

*** Regular programs include State UI, UCFE and UCX.

+ Refers to most recent calendar year. Fourth and first quarter issues publish measure based on extrapolated wages. Second and third quarter issues publish measure based on actual wages.

See glossary for data definitions

Note: Blank cells appearing in any section of this report indicates that information is unavailable.

UI Data Summary for Maryland

CYQ: 2010.4

Benefits

	(Quarterly)	Past 12 Months	Rank	High Value : Qtr		Low Value : Qtr	
Benefits Paid (000):	\$198,229	\$900,651	19	\$292,557	2009.1	\$12,029	1973.3
Initial Claims:	89,377	344,830	22	118,620	1975.1	38,277	1973.2
First Payments:	35,869	154,725	23	70,645	1975.1	14,868	1973.2
Weeks Claimed:	754,483	3,420,266	21	1,063,981	2009.1	269,003	1973.4
Wks Compensated:	640,008	2,919,618	22	959,709	2009.1	202,353	1973.4
Exhaustions:	18,734	84,093	26	28,707	2009.3	3,394	1973.4
Exhaustion Rate:		50.6%	32	52.3%	2010.1	18.4%	1979.3
Average Duration:		18.9	23	19.6	2010.1	11.4	1974.4
AWBA:	\$317.60	\$315.80	12	\$318.00	2010.2	\$52.82	1971.2
As % of AWW:		33.6	35				
Avg. Benefits per First Payment:		\$5,821					

Financial Information

	Past 12 Months	Rank
State Revenues (000):	\$856,900	14
Total Wages (000)**:	\$27,727,659	16
Total Wages (Taxable Employers)(000)**:	\$21,129,432	16
Taxable Wages (000)**:	\$3,305,644	25
Avg. Weekly Wage**:	\$939.69	7
Avg. Tax Rate on Taxable Wages (%) **:	4.08	5
Avg. Tax Rate on Total Wages (%) **:	0.83	23
Calendar Yr Taxable Wage Base:	\$8,500	39
Trust Fund (TF) Balance (000):		
(Including Loans):	\$199,897	16
TF as % of Total Wages*:	0.23	21
Interest Earned (000):	\$1,776	15
Avg. High Cost Multiple +:	0.19	19
High Cost Multiple +:	0.11	18

Labor Force

	(Quarterly)	Past 12 Mos	Rank
IUR (%):	2.8	3.2	28
TUR (%):	7.2	7.5	39
Total Unemp. (000):	212.8	222.6	22
Insured Unemployed (000) ***			
Regular Programs:	65.7	73.7	19
All Programs:	109.5	123.2	26
Reciency Rates (%) ***			
Regular Programs:	31	33	23
All Programs:	51	55	38
Covered Emp. (000)**:	2,339	2,310	20
Civ. Labor Force (000):	2,972	2,981	20
Subj. Employers (000):	137	138	17

Extended Benefits

	(Quarterly)	Past 12 Months
Extended Benefits (000):	\$0	\$0
EB First Payments:	0	0
EB Weeks Claimed:	0	0
EB Exhaustions:	0	0

Loans

	Rank
Outstanding Loan Bal (000):	\$0 31
Loan per Cov Employee:	\$0 31
Loan as % of Total Wages*:	0.0000 31

* Based on extrapolated wages for the most recent 12 months.

** Wages and Covered Employment lag the rest of the Data Summary information by six months

*** Regular programs include State UI, UCFE and UCX.

+ Refers to most recent calendar year. Fourth and first quarter issues publish measure based on extrapolated wages. Second and third quarter issues publish measure based on actual wages.

See glossary for data definitions

Note: Blank cells appearing in any section of this report indicates that information is unavailable.

UI Data Summary for **Massachusetts**

CYQ: 2010.4

Benefits

	(Quarterly)	Past 12 Months	Rank	High Value : Qtr		Low Value : Qtr	
Benefits Paid (000):	\$409,076	\$2,002,082	9	\$798,741	2009.1	\$46,838	1972.4
Initial Claims:	122,818	439,913	17	250,766	1974.4	65,733	1997.3
First Payments:	62,906	270,133	14	157,733	1975.1	30,738	1987.2
Weeks Claimed:	1,251,559	6,059,472	13	2,382,332	1975.1	556,699	1987.4
Wks Compensated:	1,095,726	5,324,533	12	2,159,531	1975.1	518,866	1987.4
Exhaustions:	33,549	141,279	12	59,185	2009.3	10,557	1984.4
Exhaustion Rate:		48.3%	37	57.0%	2009.4	24.2%	1985.3
Average Duration:		19.7	17	21.4	2010.1	14.2	1985.2
AWBA:	\$389.04	\$391.80	3	\$427.20	2009.2	\$56.86	1971.2
As % of AWW:		36.1	30				
Avg. Benefits per First Payment:		\$7,411					

Financial Information

	Past 12 Months	Rank
State Revenues (000):	\$1,739,926	7
Total Wages (000)**:	\$42,759,068	9
Total Wages (Taxable Employers)(000)**:	\$33,224,345	9
Taxable Wages (000)**:	\$9,038,078	10
Avg. Weekly Wage**:	\$1,084.69	4
Avg. Tax Rate on Taxable Wages (%) **:	3.96	6
Avg. Tax Rate on Total Wages (%) **:	1.14	7
Calendar Yr Taxable Wage Base:	\$14,000	20
Trust Fund (TF) Balance (000):		
(Including Loans):	\$18,223	40
TF as % of Total Wages*:	0.01	48
Interest Earned (000):	\$970	19
Avg. High Cost Multiple +:	0.01	23
High Cost Multiple +:	0.00	23

Labor Force

	(Quarterly)	Past 12 Mos	Rank
IUR (%):	3.1	3.8	22
TUR (%):	8.0	8.5	32
Total Unemp. (000):	277.5	297.1	16
Insured Unemployed (000) ***			
Regular Programs:	96.4	117.1	13
All Programs:	223.7	253.7	12
Reciency Rates (%) ***			
Regular Programs:	35	39	13
All Programs:	81	85	5
Covered Emp. (000)**:	3,116	3,079	13
Civ. Labor Force (000):	3,491	3,494	14
Subj. Employers (000):	198	194	12

Extended Benefits

	(Quarterly)	Past 12 Months
Extended Benefits (000):	\$136,265	\$309,943
EB First Payments:	13,896	45,274
EB Weeks Claimed:	348,363	814,612
EB Exhaustions:	15,395	36,265

Loans

	Rank
Outstanding Loan Bal (000):	\$0 31
Loan per Cov Employee:	\$0 31
Loan as % of Total Wages*:	0.0000 31

* Based on extrapolated wages for the most recent 12 months.

** Wages and Covered Employment lag the rest of the Data Summary information by six months

*** Regular programs include State UI, UCFE and UCX.

+ Refers to most recent calendar year. Fourth and first quarter issues publish measure based on extrapolated wages. Second and third quarter issues publish measure based on actual wages.

See glossary for data definitions

Note: Blank cells appearing in any section of this report indicates that information is unavailable.

UI Data Summary for Michigan

CYQ: 2010.4

Benefits

	(Quarterly)	Past 12 Months	Rank	High Value : Qtr		Low Value : Qtr	
Benefits Paid (000):	\$383,214	\$2,063,575	10	\$1,144,370	2009.1	\$37,946	1973.3
Initial Claims:	247,306	897,533	5	631,661	1980.2	107,765	1999.2
First Payments:	91,236	387,386	7	302,813	1975.1	45,089	1973.2
Weeks Claimed:	1,633,263	8,221,707	8	4,570,735	1975.1	850,960	2000.2
Wks Compensated:	1,402,315	7,325,575	8	4,105,400	1975.1	659,905	1973.4
Exhaustions:	45,849	233,020	8	97,918	1975.2	17,145	2000.3
Exhaustion Rate:		49.7%	34	51.4%	2010.3	18.2%	2010.1
Average Duration:		18.9	22	21.5	2010.1	10.1	2001.1
AWBA:	\$288.24	\$296.62	29	\$312.02	2009.2	\$57.21	1971.4
As % of AWW:		35.5	33				
Avg. Benefits per First Payment:		\$5,327					

Financial Information

	Past 12 Months	Rank
State Revenues (000):	\$1,570,412	8
Total Wages (000)**:	\$39,747,923	10
Total Wages (Taxable Employers)(000)**:	\$29,949,318	12
Taxable Wages (000)**:	\$5,662,670	15
Avg. Weekly Wage**:	\$835.08	18
Avg. Tax Rate on Taxable Wages (%) **:	4.98	2
Avg. Tax Rate on Total Wages (%) **:	1.15	5
Calendar Yr Taxable Wage Base:	\$9,000	35
Trust Fund (TF) Balance (000):		
(Including Loans):	\$188,013	17
TF as % of Total Wages*:	0.16	25
Interest Earned (000):	\$0	39
Avg. High Cost Multiple +:	N.A.	24
High Cost Multiple +:	N.A.	24

Labor Force

	(Quarterly)	Past 12 Mos	Rank
IUR (%):	3.5	4.4	15
TUR (%):	10.8	12.5	7
Total Unemp. (000):	510.6	596.8	8
Insured Unemployed (000) ***			
Regular Programs:	129.5	161.8	8
All Programs:	346.0	420.7	9
Reciency Rates (%) ***			
Regular Programs:	25	27	36
All Programs:	68	70	15
Covered Emp. (000)**:	3,731	3,692	10
Civ. Labor Force (000):	4,747	4,790	8
Subj. Employers (000):	202	204	11

Extended Benefits

	(Quarterly)	Past 12 Months
Extended Benefits (000):	\$171,718	\$507,370
EB First Payments:	30,623	134,124
EB Weeks Claimed:	648,238	1,768,119
EB Exhaustions:	31,303	58,755

Loans

	Rank
Outstanding Loan Bal (000):	\$3,710,392 2
Loan per Cov Employee:	\$994 1
Loan as % of Total Wages*:	3.0464 1

* Based on extrapolated wages for the most recent 12 months.

** Wages and Covered Employment lag the rest of the Data Summary information by six months

*** Regular programs include State UI, UCFE and UCX.

+ Refers to most recent calendar year. Fourth and first quarter issues publish measure based on extrapolated wages. Second and third quarter issues publish measure based on actual wages.

See glossary for data definitions

Note: Blank cells appearing in any section of this report indicates that information is unavailable.

UI Data Summary for Minnesota

CYQ: 2010.4

Benefits

	(Quarterly)	Past 12 Months	Rank	High Value : Qtr		Low Value : Qtr	
Benefits Paid (000):	\$238,172	\$1,271,546	15	\$487,854	2009.1	\$10,434	1971.3
Initial Claims:	113,107	365,626	18	134,061	2009.4	30,305	1973.2
First Payments:	46,154	184,752	17	92,782	2009.1	14,570	1973.3
Weeks Claimed:	862,948	4,262,327	16	1,608,943	2009.1	257,773	1973.3
Wks Compensated:	718,135	3,723,012	20	1,409,108	2009.1	199,220	1973.3
Exhaustions:	22,960	116,206	19	41,161	2009.3	4,658	1978.3
Exhaustion Rate:		55.3%	18	58.0%	2010.1	22.5%	2000.4
Average Duration:		20.2	12	21.4	2010.2	13.0	1980.1
AWBA:	\$347.16	\$355.96	6	\$393.70	2009.3	\$48.42	1971.3
As % of AWW:		40.7	13				
Avg. Benefits per First Payment:		\$6,882					

Financial Information

	Past 12 Months	Rank
State Revenues (000):	\$982,101	12
Total Wages (000)**:	\$28,519,122	15
Total Wages (Taxable Employers)(000)**:	\$21,480,024	15
Taxable Wages (000)**:	\$12,371,221	9
Avg. Weekly Wage**:	\$874.43	15
Avg. Tax Rate on Taxable Wages (%) **:	1.76	42
Avg. Tax Rate on Total Wages (%) **:	0.85	20
Calendar Yr Taxable Wage Base:	\$27,000	9
Trust Fund (TF) Balance (000):		
(Including Loans):	\$8,882	45
TF as % of Total Wages*:	0.01	50
Interest Earned (000):	\$0	39
Avg. High Cost Multiple +:	N.A.	24
High Cost Multiple +:	N.A.	24

Labor Force

	(Quarterly)	Past 12 Mos	Rank
IUR (%):	2.7	3.3	35
TUR (%):	6.6	7.3	42
Total Unemp. (000):	194.8	216.9	26
Insured Unemployed (000) ***			
Regular Programs:	67.0	82.0	18
All Programs:	138.6	157.8	19
Reciency Rates (%) ***			
Regular Programs:	34	38	14
All Programs:	71	73	12
Covered Emp. (000)**:	2,540	2,515	17
Civ. Labor Force (000):	2,958	2,963	21
Subj. Employers (000):	131	132	18

Extended Benefits

	(Quarterly)	Past 12 Months
Extended Benefits (000):	\$42,903	\$163,833
EB First Payments:	11,227	68,686
EB Weeks Claimed:	154,321	549,317
EB Exhaustions:	9,866	28,327

Loans

	Rank
Outstanding Loan Bal (000):	\$544,704 16
Loan per Cov Employee:	\$214 21
Loan as % of Total Wages*:	0.6229 21

* Based on extrapolated wages for the most recent 12 months.

** Wages and Covered Employment lag the rest of the Data Summary information by six months

*** Regular programs include State UI, UCFE and UCX.

+ Refers to most recent calendar year. Fourth and first quarter issues publish measure based on extrapolated wages. Second and third quarter issues publish measure based on actual wages.

See glossary for data definitions

Note: Blank cells appearing in any section of this report indicates that information is unavailable.

UI Data Summary for Mississippi

CYQ: 2010.4

Benefits

	(Quarterly)	Past 12 Months	Rank	High Value : Qtr		Low Value : Qtr	
Benefits Paid (000):	\$56,573	\$258,604	39	\$99,628	2005.4	\$1,738	1972.4
Initial Claims:	41,598	157,333	35	111,429	1982.1	10,210	1972.3
First Payments:	17,414	79,533	36	46,604	1982.1	3,605	1972.3
Weeks Claimed:	386,926	1,719,641	34	687,309	1983.1	64,694	1972.4
Wks Compensated:	316,140	1,425,832	35	545,032	1983.1	43,771	1972.4
Exhaustions:	9,682	41,628	35	14,442	2009.3	903	1973.4
Exhaustion Rate:		47.9%	38	48.3%	2010.3	19.3%	1974.3
Average Duration:		17.9	33	18.9	2010.1	8.5	1974.4
AWBA:	\$187.98	\$189.99	52	\$202.61	2005.4	\$31.97	1974.1
As % of AWW:		29.7	42				
Avg. Benefits per First Payment:		\$3,252					

Financial Information

	Past 12 Months	Rank
State Revenues (000):	\$126,584	46
Total Wages (000)**:	\$8,744,099	35
Total Wages (Taxable Employers)(000)**:	\$6,705,179	36
Taxable Wages (000)**:	\$1,385,644	39
Avg. Weekly Wage**:	\$640.74	50
Avg. Tax Rate on Taxable Wages (%) **:	1.57	46
Avg. Tax Rate on Total Wages (%) **:	0.39	46
Calendar Yr Taxable Wage Base:	\$7,000	50
Trust Fund (TF) Balance (000):		
(Including Loans):	\$339,704	4
TF as % of Total Wages*:	1.27	8
Interest Earned (000):	\$3,686	4
Avg. High Cost Multiple +:	1.19	2
High Cost Multiple +:	0.64	2

Labor Force

	(Quarterly)	Past 12 Mos	Rank
IUR (%):	3.2	3.5	21
TUR (%):	9.8	10.4	10
Total Unemp. (000):	129.4	137.1	31
Insured Unemployed (000) ***			
Regular Programs:	33.3	36.9	32
All Programs:	60.5	68.2	31
Reciency Rates (%) ***			
Regular Programs:	26	27	32
All Programs:	47	50	45
Covered Emp. (000)**:	1,053	1,046	35
Civ. Labor Force (000):	1,319	1,313	35
Subj. Employers (000):	54	55	36

Extended Benefits

	(Quarterly)	Past 12 Months
Extended Benefits (000):	\$0	\$0
EB First Payments:	0	0
EB Weeks Claimed:	0	0
EB Exhaustions:	0	0

Loans

	Rank
Outstanding Loan Bal (000):	\$0 31
Loan per Cov Employee:	\$0 31
Loan as % of Total Wages*:	0.0000 31

* Based on extrapolated wages for the most recent 12 months.

** Wages and Covered Employment lag the rest of the Data Summary information by six months

*** Regular programs include State UI, UCFE and UCX.

+ Refers to most recent calendar year. Fourth and first quarter issues publish measure based on extrapolated wages. Second and third quarter issues publish measure based on actual wages.

See glossary for data definitions

Note: Blank cells appearing in any section of this report indicates that information is unavailable.

UI Data Summary for Missouri

CYQ: 2010.4

Benefits

	(Quarterly)	Past 12 Months	Rank	High Value : Qtr		Low Value : Qtr	
Benefits Paid (000):	\$168,082	\$828,317	21	\$301,199	2009.1	\$13,289	1973.3
Initial Claims:	137,628	509,801	15	230,473	1975.1	61,852	1972.2
First Payments:	41,431	189,210	19	102,722	1975.1	21,081	1972.2
Weeks Claimed:	806,455	3,819,024	19	1,444,227	2009.1	368,393	1973.3
Wks Compensated:	727,852	3,528,443	18	1,213,860	2009.1	267,636	1973.3
Exhaustions:	22,722	106,239	20	37,524	2009.3	5,746	1973.4
Exhaustion Rate:		51.1%	31	53.6%	2010.1	22.6%	2000.4
Average Duration:		18.7	25	19.6	2010.2	10.4	1979.3
AWBA:	\$240.99	\$244.16	44	\$259.18	2009.2	\$49.06	1971.3
As % of AWW:		32.0	38				
Avg. Benefits per First Payment:		\$4,378					

Financial Information

	Past 12 Months	Rank
State Revenues (000):	\$603,677	20
Total Wages (000)**:	\$24,843,868	20
Total Wages (Taxable Employers)(000)**:	\$18,980,708	21
Taxable Wages (000)**:	\$6,454,775	16
Avg. Weekly Wage**:	\$762.77	31
Avg. Tax Rate on Taxable Wages (%) **:	2.11	33
Avg. Tax Rate on Total Wages (%) **:	0.68	37
Calendar Yr Taxable Wage Base:	\$13,000	21
Trust Fund (TF) Balance (000):		
(Including Loans):	\$18,537	39
TF as % of Total Wages*:	0.02	35
Interest Earned (000):	\$0	39
Avg. High Cost Multiple +:	N.A.	24
High Cost Multiple +:	N.A.	24

Labor Force

	(Quarterly)	Past 12 Mos	Rank
IUR (%):	2.6	3.0	36
TUR (%):	9.2	9.6	18
Total Unemp. (000):	275.8	288.8	17
Insured Unemployed (000) ***			
Regular Programs:	65.2	76.1	20
All Programs:	137.6	150.8	20
Reciency Rates (%) ***			
Regular Programs:	24	26	41
All Programs:	50	52	41
Covered Emp. (000)**:	2,540	2,521	18
Civ. Labor Force (000):	2,988	3,014	19
Subj. Employers (000):	137	137	16

Extended Benefits

	(Quarterly)	Past 12 Months
Extended Benefits (000):	\$37,095	\$83,895
EB First Payments:	8,103	25,094
EB Weeks Claimed:	139,553	269,541
EB Exhaustions:	6,260	13,087

Loans

	Rank
Outstanding Loan Bal (000):	\$722,117 14
Loan per Cov Employee:	\$284 19
Loan as % of Total Wages*:	0.9216 17

* Based on extrapolated wages for the most recent 12 months.

** Wages and Covered Employment lag the rest of the Data Summary information by six months

*** Regular programs include State UI, UCFE and UCX.

+ Refers to most recent calendar year. Fourth and first quarter issues publish measure based on extrapolated wages. Second and third quarter issues publish measure based on actual wages.

See glossary for data definitions

Note: Blank cells appearing in any section of this report indicates that information is unavailable.

UI Data Summary for **Montana**

CYQ: **2010.4**

Benefits

	(Quarterly)	Past 12 Months	Rank	High Value : Qtr		Low Value : Qtr	
Benefits Paid (000):	\$35,571	\$175,375	46	\$65,852	2010.1	\$1,267	1971.3
Initial Claims:	28,685	87,905	41	32,181	2009.4	7,063	2006.3
First Payments:	10,117	34,424	44	16,260	2009.1	2,169	1971.3
Weeks Claimed:	186,385	862,261	45	306,434	2010.1	47,952	1973.3
Wks Compensated:	157,597	745,730	44	266,683	2010.1	31,660	1971.3
Exhaustions:	4,338	20,882	45	6,391	2009.2	1,032	1971.4
Exhaustion Rate:		57.7%	13	57.7%	2010.4	25.2%	1978.3
Average Duration:		21.7	3	22.1	2010.2	12.2	1979.1
AWBA:	\$261.06	\$271.83	39	\$280.71	2009.2	\$37.87	1971.2
As % of AWW:		42.5	9				
Avg. Benefits per First Payment:		\$5,095					

Financial Information

	Past 12 Months	Rank
State Revenues (000):	\$114,151	47
Total Wages (000)**:	\$3,410,993	48
Total Wages (Taxable Employers)(000)**:	\$2,735,562	47
Taxable Wages (000)**:	\$2,119,624	38
Avg. Weekly Wage**:	\$639.70	51
Avg. Tax Rate on Taxable Wages (%) **:	1.30	47
Avg. Tax Rate on Total Wages (%) **:	0.87	18
Calendar Yr Taxable Wage Base:	\$26,000	10
Trust Fund (TF) Balance (000):		
(Including Loans):	\$111,973	20
TF as % of Total Wages*:	1.00	12
Interest Earned (000):	\$1,239	17
Avg. High Cost Multiple +:	0.7	13
High Cost Multiple +:	0.33	15

Labor Force

	(Quarterly)	Past 12 Mos	Rank
IUR (%):	3.7	4.3	11
TUR (%):	7.2	7.3	38
Total Unemp. (000):	35.6	36.1	45
Insured Unemployed (000) ***			
Regular Programs:	15.2	17.4	42
All Programs:	23.7	27.2	44
Reciency Rates (%) ***			
Regular Programs:	43	48	5
All Programs:	67	76	17
Covered Emp. (000)**:	409	405	46
Civ. Labor Force (000):	494	497	45
Subj. Employers (000):	37	37	43

Extended Benefits

	(Quarterly)	Past 12 Months
Extended Benefits (000):	\$13	\$2,792
EB First Payments:	0	2,451
EB Weeks Claimed:	1	10,825
EB Exhaustions:	1	470

Loans

	Rank
Outstanding Loan Bal (000):	\$0 31
Loan per Cov Employee:	\$0 31
Loan as % of Total Wages*:	0.0000 31

* Based on extrapolated wages for the most recent 12 months.

** Wages and Covered Employment lag the rest of the Data Summary information by six months

*** Regular programs include State UI, UCFE and UCX.

+ Refers to most recent calendar year. Fourth and first quarter issues publish measure based on extrapolated wages. Second and third quarter issues publish measure based on actual wages.

See glossary for data definitions

Note: Blank cells appearing in any section of this report indicates that information is unavailable.

UI Data Summary for **Nebraska**

CYQ: 2010.4

Benefits

	(Quarterly)	Past 12 Months	Rank	High Value : Qtr		Low Value : Qtr	
Benefits Paid (000):	\$42,556	\$197,810	43	\$75,650	2009.2	\$2,319	1971.3
Initial Claims:	29,897	107,015	39	34,948	2009.4	7,244	1972.2
First Payments:	12,617	54,022	39	22,141	1975.1	3,557	1972.2
Weeks Claimed:	218,592	990,011	41	316,646	2010.1	51,311	1972.3
Wks Compensated:	169,989	803,786	42	282,568	1983.1	45,263	1978.3
Exhaustions:	6,501	29,871	39	8,602	2009.3	917	1977.4
Exhaustion Rate:		52.6%	28	55.4%	2010.1	23.7%	1989.1
Average Duration:		14.9	50	15.4	1976.1	10.3	1980.2
AWBA:	\$256.68	\$251.86	40	\$256.68	2010.4	\$42.90	1971.3
As % of AWW:		35.9	32				
Avg. Benefits per First Payment:		\$3,662					

Financial Information

	Past 12 Months	Rank
State Revenues (000):	\$212,482	35
Total Wages (000)**:	\$7,909,552	37
Total Wages (Taxable Employers)(000)**:	\$5,903,020	37
Taxable Wages (000)**:	\$1,367,129	40
Avg. Weekly Wage**:	\$701.17	44
Avg. Tax Rate on Taxable Wages (%) **:	2.81	21
Avg. Tax Rate on Total Wages (%) **:	0.76	28
Calendar Yr Taxable Wage Base:	\$9,000	35
Trust Fund (TF) Balance (000):		
(Including Loans):	\$215,340	15
TF as % of Total Wages*:	0.90	14
Interest Earned (000):	\$2,372	12
Avg. High Cost Multiple +:	1.18	3
High Cost Multiple +:	0.58	6

Labor Force

	(Quarterly)	Past 12 Mos	Rank
IUR (%):	1.9	2.2	49
TUR (%):	4.0	4.7	51
Total Unemp. (000):	39.3	45.4	43
Insured Unemployed (000) ***			
Regular Programs:	16.6	19.0	40
All Programs:	28.0	32.8	41
Reciency Rates (%) ***			
Regular Programs:	42	42	6
All Programs:	71	72	11
Covered Emp. (000)**:	885	879	37
Civ. Labor Force (000):	973	977	37
Subj. Employers (000):	48	48	38

Extended Benefits

	(Quarterly)	Past 12 Months
Extended Benefits (000):	\$0	\$0
EB First Payments:	0	0
EB Weeks Claimed:	0	0
EB Exhaustions:	0	0

Loans

	Rank
Outstanding Loan Bal (000):	\$0 31
Loan per Cov Employee:	\$0 31
Loan as % of Total Wages*:	0.0000 31

* Based on extrapolated wages for the most recent 12 months.

** Wages and Covered Employment lag the rest of the Data Summary information by six months

*** Regular programs include State UI, UCFE and UCX.

+ Refers to most recent calendar year. Fourth and first quarter issues publish measure based on extrapolated wages. Second and third quarter issues publish measure based on actual wages.

See glossary for data definitions

Note: Blank cells appearing in any section of this report indicates that information is unavailable.

UI Data Summary for Nevada

CYQ: 2010.4

Benefits

	(Quarterly)	Past 12 Months	Rank	High Value : Qtr		Low Value : Qtr	
Benefits Paid (000):	\$159,831	\$789,416	22	\$295,712	2009.2	\$3,807	1971.2
Initial Claims:	70,349	272,260	27	92,304	2009.1	15,524	1989.2
First Payments:	32,397	128,499	26	55,545	2009.1	5,250	1973.2
Weeks Claimed:	584,486	2,775,219	29	1,030,863	2009.2	81,969	1973.3
Wks Compensated:	540,782	2,587,016	26	960,458	2009.2	70,349	1978.3
Exhaustions:	18,439	91,098	27	32,927	2009.3	1,506	1978.3
Exhaustion Rate:		61.0%	6	63.3%	2010.1	21.3%	1989.3
Average Duration:		20.1	13	21.0	2010.2	11.4	1979.2
AWBA:	\$308.96	\$317.88	17	\$325.17	2010.1	\$46.51	1971.2
As % of AWW:		39.4	19				
Avg. Benefits per First Payment:		\$6,143					

Financial Information

	Past 12 Months	Rank
State Revenues (000):	\$291,833	30
Total Wages (000)**:	\$11,233,029	32
Total Wages (Taxable Employers)(000)**:	\$9,351,072	32
Taxable Wages (000)**:	\$6,449,709	19
Avg. Weekly Wage**:	\$807.74	22
Avg. Tax Rate on Taxable Wages (%) **:	1.22	50
Avg. Tax Rate on Total Wages (%) **:	0.70	33
Calendar Yr Taxable Wage Base:	\$27,000	9
Trust Fund (TF) Balance (000):		
(Including Loans):	\$31,980	36
TF as % of Total Wages*:	0.09	27
Interest Earned (000):	\$0	39
Avg. High Cost Multiple +:	N.A.	24
High Cost Multiple +:	N.A.	24

Labor Force

	(Quarterly)	Past 12 Mos	Rank
IUR (%):	4.2	4.9	5
TUR (%):	14.5	14.9	2
Total Unemp. (000):	192.9	200.8	27
Insured Unemployed (000) ***			
Regular Programs:	46.2	54.1	29
All Programs:	114.1	126.6	24
Reciency Rates (%) ***			
Regular Programs:	24	27	39
All Programs:	59	63	22
Covered Emp. (000)**:	1,095	1,096	34
Civ. Labor Force (000):	1,331	1,350	34
Subj. Employers (000):	56	57	35

Extended Benefits

	(Quarterly)	Past 12 Months
Extended Benefits (000):	\$48,640	\$111,460
EB First Payments:	14,932	36,429
EB Weeks Claimed:	157,435	364,671
EB Exhaustions:	5,046	14,098

Loans

	Rank
Outstanding Loan Bal (000):	\$620,602 15
Loan per Cov Employee:	\$567 5
Loan as % of Total Wages*:	1.6134 11

* Based on extrapolated wages for the most recent 12 months.

** Wages and Covered Employment lag the rest of the Data Summary information by six months

*** Regular programs include State UI, UCFE and UCX.

+ Refers to most recent calendar year. Fourth and first quarter issues publish measure based on extrapolated wages. Second and third quarter issues publish measure based on actual wages.

See glossary for data definitions

Note: Blank cells appearing in any section of this report indicates that information is unavailable.

UI Data Summary for **New Hampshire**

CYQ: 2010.4

Benefits

	(Quarterly)	Past 12 Months	Rank	High Value : Qtr		Low Value : Qtr	
Benefits Paid (000):	\$31,581	\$178,293	47	\$75,554	2009.2	\$1,519	1972.4
Initial Claims:	22,804	92,347	46	37,881	1974.4	5,974	2000.2
First Payments:	7,511	42,319	47	31,034	1975.2	2,086	1999.4
Weeks Claimed:	174,245	947,637	46	349,058	2009.3	24,573	1987.4
Wks Compensated:	121,662	683,757	48	278,058	2009.2	16,768	1987.4
Exhaustions:	3,276	17,375	48	7,276	2009.3	1	1985.3
Exhaustion Rate:		35.6%	51	42.0%	2010.1	1.8%	1988.1
Average Duration:		16.2	45	18.0	2004.1	5.4	1988.1
AWBA:	\$270.62	\$272.24	34	\$291.60	2009.4	\$45.06	1971.2
As % of AWW:		31.4	40				
Avg. Benefits per First Payment:		\$4,213					

Financial Information

	Past 12 Months	Rank
State Revenues (000):	\$161,724	41
Total Wages (000)**:	\$6,674,753	39
Total Wages (Taxable Employers)(000)**:	\$5,025,283	39
Taxable Wages (000)**:	\$964,234	47
Avg. Weekly Wage**:	\$867.30	16
Avg. Tax Rate on Taxable Wages (%) **:	3.19	13
Avg. Tax Rate on Total Wages (%) **:	0.73	32
Calendar Yr Taxable Wage Base:	\$10,000	30
Trust Fund (TF) Balance (000):		
(Including Loans):	\$4,283	48
TF as % of Total Wages*:	0.02	38
Interest Earned (000):	\$87	23
Avg. High Cost Multiple +:	0.02	22
High Cost Multiple +:	0.01	22

Labor Force

	(Quarterly)	Past 12 Mos	Rank
IUR (%):	2.3	3.1	44
TUR (%):	5.4	6.1	49
Total Unemp. (000):	39.8	45.1	42
Insured Unemployed (000) ***			
Regular Programs:	13.4	18.3	46
All Programs:	20.4	27.1	47
Reciency Rates (%) ***			
Regular Programs:	34	40	15
All Programs:	51	60	39
Covered Emp. (000)**:	596	592	40
Civ. Labor Force (000):	740	744	41
Subj. Employers (000):	40	40	42

Extended Benefits

	(Quarterly)	Past 12 Months
Extended Benefits (000):	\$96	\$17,788
EB First Payments:	8	8,394
EB Weeks Claimed:	489	54,227
EB Exhaustions:	11	1,950

Loans

	Rank
Outstanding Loan Bal (000):	\$0 31
Loan per Cov Employee:	\$0 31
Loan as % of Total Wages*:	0.0000 31

* Based on extrapolated wages for the most recent 12 months.

** Wages and Covered Employment lag the rest of the Data Summary information by six months

*** Regular programs include State UI, UCFE and UCX.

+ Refers to most recent calendar year. Fourth and first quarter issues publish measure based on extrapolated wages. Second and third quarter issues publish measure based on actual wages.

See glossary for data definitions

Note: Blank cells appearing in any section of this report indicates that information is unavailable.

UI Data Summary for **New Jersey**

CYQ: 2010.4

Benefits

	(Quarterly)	Past 12 Months	Rank	High Value : Qtr		Low Value : Qtr	
Benefits Paid (000):	\$657,850	\$3,001,558	4	\$1,010,195	2009.1	\$64,334	1972.4
Initial Claims:	171,690	635,738	13	290,136	1975.1	93,677	1987.3
First Payments:	85,022	385,201	8	185,783	1975.1	45,958	1988.2
Weeks Claimed:	1,959,648	8,714,083	7	2,904,747	2009.1	762,372	1987.4
Wks Compensated:	1,770,339	8,002,626	7	2,724,700	1975.1	715,819	1987.4
Exhaustions:	55,060	240,431	7	85,010	2009.3	18,202	1988.4
Exhaustion Rate:		59.2%	9	62.0%	2009.4	33.3%	1988.3
Average Duration:		20.8	9	21.8	2010.1	13.7	1974.1
AWBA:	\$396.10	\$397.41	2	\$405.01	2010.2	\$61.32	1971.1
As % of AWW:		37.2	26				
Avg. Benefits per First Payment:		\$7,792					

Financial Information

	Past 12 Months	Rank
State Revenues (000):	\$2,338,906	5
Total Wages (000)**:	\$49,681,096	7
Total Wages (Taxable Employers)(000)**:	\$39,028,279	7
Taxable Wages (000)**:	\$20,190,157	3
Avg. Weekly Wage**:	\$1,067.82	5
Avg. Tax Rate on Taxable Wages (%) **:	2.34	26
Avg. Tax Rate on Total Wages (%) **:	1.04	11
Calendar Yr Taxable Wage Base:	\$29,700	6
Trust Fund (TF) Balance (000):		
(Including Loans):	\$35,807	34
TF as % of Total Wages*:	0.02	37
Interest Earned (000):	\$0	39
Avg. High Cost Multiple +:	N.A.	24
High Cost Multiple +:	N.A.	24

Labor Force

	(Quarterly)	Past 12 Mos	Rank
IUR (%):	4.1	4.5	7
TUR (%):	8.8	9.5	24
Total Unemp. (000):	393.2	425.7	11
Insured Unemployed (000) ***			
Regular Programs:	150.9	167.0	7
All Programs:	385.1	423.5	7
Reciency Rates (%) ***			
Regular Programs:	38	39	9
All Programs:	98	99	1
Covered Emp. (000)**:	3,736	3,684	8
Civ. Labor Force (000):	4,464	4,502	10
Subj. Employers (000):	236	236	7

Extended Benefits

	(Quarterly)	Past 12 Months
Extended Benefits (000):	\$248,529	\$637,486
EB First Payments:	30,041	96,908
EB Weeks Claimed:	690,952	1,882,731
EB Exhaustions:	28,902	69,391

Loans

	Rank
Outstanding Loan Bal (000):	\$1,607,867 10
Loan per Cov Employee:	\$430 13
Loan as % of Total Wages*:	0.9792 16

* Based on extrapolated wages for the most recent 12 months.

** Wages and Covered Employment lag the rest of the Data Summary information by six months

*** Regular programs include State UI, UCFE and UCX.

+ Refers to most recent calendar year. Fourth and first quarter issues publish measure based on extrapolated wages. Second and third quarter issues publish measure based on actual wages.

See glossary for data definitions

Note: Blank cells appearing in any section of this report indicates that information is unavailable.

UI Data Summary for **New Mexico**

CYQ: 2010.4

Benefits

	(Quarterly)	Past 12 Months	Rank	High Value : Qtr		Low Value : Qtr	
Benefits Paid (000):	\$75,401	\$354,835	34	\$99,863	2009.2	\$2,686	1972.3
Initial Claims:	24,396	100,215	45	30,146	2009.1	9,060	2006.1
First Payments:	12,365	53,745	40	19,668	2009.1	3,613	1972.2
Weeks Claimed:	288,293	1,298,840	37	410,402	2009.2	82,983	1972.3
Wks Compensated:	251,759	1,136,942	36	341,219	2009.2	58,692	1972.3
Exhaustions:	8,501	36,413	37	11,890	2009.3	994	1978.4
Exhaustion Rate:		65.0%	3	65.6%	2010.3	21.8%	1979.4
Average Duration:		21.2	7	21.6	2010.2	14.1	1980.2
AWBA:	\$302.42	\$315.76	20	\$321.93	2010.2	\$44.69	1971.2
As % of AWW:		43.7	6				
Avg. Benefits per First Payment:		\$6,602					

Financial Information

	Past 12 Months	Rank
State Revenues (000):	\$268,421	33
Total Wages (000)**:	\$7,042,445	38
Total Wages (Taxable Employers)(000)**:	\$5,262,656	38
Taxable Wages (000)**:	\$3,013,788	34
Avg. Weekly Wage**:	\$722.34	39
Avg. Tax Rate on Taxable Wages (%) **:	1.30	48
Avg. Tax Rate on Total Wages (%) **:	0.66	38
Calendar Yr Taxable Wage Base:	\$21,900	15
Trust Fund (TF) Balance (000):		
(Including Loans):	\$224,869	14
TF as % of Total Wages*:	1.05	10
Interest Earned (000):	\$2,345	13
Avg. High Cost Multiple +:	0.79	11
High Cost Multiple +:	0.64	2

Labor Force

	(Quarterly)	Past 12 Mos	Rank
IUR (%):	3.1	3.4	23
TUR (%):	8.3	8.4	27
Total Unemp. (000):	79.4	80.2	37
Insured Unemployed (000) ***			
Regular Programs:	23.1	25.7	37
All Programs:	48.0	50.9	35
Reciency Rates (%) ***			
Regular Programs:	29	32	28
All Programs:	61	63	21
Covered Emp. (000)**:	752	751	38
Civ. Labor Force (000):	958	953	38
Subj. Employers (000):	44	44	40

Extended Benefits

	(Quarterly)	Past 12 Months
Extended Benefits (000):	\$31,671	\$101,816
EB First Payments:	3,129	16,697
EB Weeks Claimed:	103,498	323,240
EB Exhaustions:	0	0

Loans

	Rank
Outstanding Loan Bal (000):	\$0 31
Loan per Cov Employee:	\$0 31
Loan as % of Total Wages*:	0.0000 31

* Based on extrapolated wages for the most recent 12 months.

** Wages and Covered Employment lag the rest of the Data Summary information by six months

*** Regular programs include State UI, UCFE and UCX.

+ Refers to most recent calendar year. Fourth and first quarter issues publish measure based on extrapolated wages. Second and third quarter issues publish measure based on actual wages.

See glossary for data definitions

Note: Blank cells appearing in any section of this report indicates that information is unavailable.

UI Data Summary for **New York**

CYQ: **2010.4**

Benefits

	(Quarterly)	Past 12 Months	Rank	High Value : Qtr		Low Value : Qtr	
Benefits Paid (000):	\$860,783	\$3,930,005	2	\$1,343,648	2009.2	\$126,179	1973.4
Initial Claims:	364,771	1,413,303	3	674,249	1974.4	188,751	2000.3
First Payments:	146,724	666,359	2	355,805	1975.1	78,936	1985.2
Weeks Claimed:	3,474,791	15,266,343	2	5,968,340	1975.1	1,728,933	1999.4
Wks Compensated:	3,008,776	13,475,862	2	5,422,159	1975.1	1,543,669	2000.2
Exhaustions:	86,127	370,371	3	138,214	2009.3	36,374	1988.1
Exhaustion Rate:		53.3%	24	59.2%	2003.2	29.2%	1974.3
Average Duration:		20.2	11	23.0	1976.1	15.4	2001.2
AWBA:	\$303.15	\$306.61	19	\$317.99	2009.2	\$57.80	1971.3
As % of AWW:		26.9	50				
Avg. Benefits per First Payment:		\$5,898					

Financial Information

	Past 12 Months	Rank
State Revenues (000):	\$2,998,652	2
Total Wages (000)**:	\$115,869,756	2
Total Wages (Taxable Employers)(000)**:	\$84,810,114	3
Taxable Wages (000)**:	\$10,521,833	5
Avg. Weekly Wage**:	\$1,139.93	2
Avg. Tax Rate on Taxable Wages (%) **:	4.38	4
Avg. Tax Rate on Total Wages (%) **:	0.69	36
Calendar Yr Taxable Wage Base:	\$8,500	39
Trust Fund (TF) Balance (000):		
(Including Loans):	\$34,713	35
TF as % of Total Wages*:	0.01	51
Interest Earned (000):	\$0	39
Avg. High Cost Multiple +:	N.A.	24
High Cost Multiple +:	N.A.	24

Labor Force

	(Quarterly)	Past 12 Mos	Rank
IUR (%):	3.3	3.6	19
TUR (%):	8.1	8.6	30
Total Unemp. (000):	771.6	824.1	4
Insured Unemployed (000) ***			
Regular Programs:	270.3	294.3	2
All Programs:	601.2	644.6	2
Reciency Rates (%) ***			
Regular Programs:	35	36	11
All Programs:	78	78	7
Covered Emp. (000)**:	8,285	8,182	3
Civ. Labor Force (000):	9,550	9,631	3
Subj. Employers (000):	496	493	2

Extended Benefits

	(Quarterly)	Past 12 Months
Extended Benefits (000):	\$394,502	\$799,785
EB First Payments:	54,106	174,452
EB Weeks Claimed:	1,312,494	2,672,606
EB Exhaustions:	42,682	88,006

Loans

	Rank
Outstanding Loan Bal (000):	\$3,134,427 3
Loan per Cov Employee:	\$378 15
Loan as % of Total Wages*:	0.8506 19

* Based on extrapolated wages for the most recent 12 months.

** Wages and Covered Employment lag the rest of the Data Summary information by six months

*** Regular programs include State UI, UCFE and UCX.

+ Refers to most recent calendar year. Fourth and first quarter issues publish measure based on extrapolated wages. Second and third quarter issues publish measure based on actual wages.

See glossary for data definitions

Note: Blank cells appearing in any section of this report indicates that information is unavailable.

UI Data Summary for North Carolina

CYQ: 2010.4

Benefits

	(Quarterly)	Past 12 Months	Rank	High Value : Qtr		Low Value : Qtr	
Benefits Paid (000):	\$361,480	\$1,981,900	11	\$752,298	2009.2	\$5,433	1973.4
Initial Claims:	220,212	841,374	9	603,068	1982.1	39,534	1972.4
First Payments:	82,340	378,791	10	247,972	1975.1	13,856	1972.4
Weeks Claimed:	1,585,879	8,092,055	9	2,823,864	2009.2	177,061	1973.4
Wks Compensated:	1,294,451	6,891,903	9	2,515,240	2009.2	131,814	1973.4
Exhaustions:	43,761	283,304	9	92,476	2009.3	1,894	1973.4
Exhaustion Rate:		60.7%	8	63.9%	2010.2	12.5%	1989.1
Average Duration:		18.2	28	18.4	2010.2	7.5	1988.4
AWBA:	\$291.99	\$298.46	24	\$310.95	2009.3	\$38.77	1972.2
As % of AWW:		38.6	24				
Avg. Benefits per First Payment:		\$5,232					

Financial Information

	Past 12 Months	Rank
State Revenues (000):	\$824,464	16
Total Wages (000)**:	\$36,694,965	13
Total Wages (Taxable Employers)(000)**:	\$28,796,953	13
Taxable Wages (000)**:	\$14,719,915	7
Avg. Weekly Wage**:	\$772.82	29
Avg. Tax Rate on Taxable Wages (%) **:	1.73	43
Avg. Tax Rate on Total Wages (%) **:	0.76	29
Calendar Yr Taxable Wage Base:	\$19,700	16
Trust Fund (TF) Balance (000):		
(Including Loans):	\$225,658	13
TF as % of Total Wages*:	0.19	23
Interest Earned (000):	\$0	39
Avg. High Cost Multiple +:	N.A.	24
High Cost Multiple +:	N.A.	24

Labor Force

	(Quarterly)	Past 12 Mos	Rank
IUR (%):	3.4	4.3	17
TUR (%):	9.7	10.6	12
Total Unemp. (000):	430.6	476.4	10
Insured Unemployed (000) ***			
Regular Programs:	126.4	159.0	9
All Programs:	327.0	355.1	10
Reciency Rates (%) ***			
Regular Programs:	29	33	27
All Programs:	76	75	8
Covered Emp. (000)**:	3,732	3,712	9
Civ. Labor Force (000):	4,457	4,513	11
Subj. Employers (000):	196	197	13

Extended Benefits

	(Quarterly)	Past 12 Months
Extended Benefits (000):	\$132,896	\$307,239
EB First Payments:	43,730	142,946
EB Weeks Claimed:	521,852	1,439,543
EB Exhaustions:	16,852	45,456

Loans

	Rank
Outstanding Loan Bal (000):	\$2,508,604 5
Loan per Cov Employee:	\$672 3
Loan as % of Total Wages*:	2.1287 3

* Based on extrapolated wages for the most recent 12 months.

** Wages and Covered Employment lag the rest of the Data Summary information by six months

*** Regular programs include State UI, UCFE and UCX.

+ Refers to most recent calendar year. Fourth and first quarter issues publish measure based on extrapolated wages. Second and third quarter issues publish measure based on actual wages.

See glossary for data definitions

Note: Blank cells appearing in any section of this report indicates that information is unavailable.

UI Data Summary for North Dakota

CYQ: 2010.4

Benefits

	(Quarterly)	Past 12 Months	Rank	High Value : Qtr		Low Value : Qtr	
Benefits Paid (000):	\$12,452	\$74,250	51	\$35,850	2009.1	\$620	1971.3
Initial Claims:	12,135	35,056	50	19,325	1982.4	2,017	1971.3
First Payments:	4,576	17,569	51	11,508	1983.1	929	1971.3
Weeks Claimed:	52,543	285,470	51	179,165	1983.1	19,179	1971.3
Wks Compensated:	40,741	241,442	51	171,825	1983.1	14,351	1971.3
Exhaustions:	1,530	8,432	51	4,709	1983.2	382	1971.4
Exhaustion Rate:		42.6%	46	47.0%	1983.2	23.0%	1979.1
Average Duration:		13.7	53	15.9	1987.1	9.8	1997.2
AWBA:	\$308.43	\$310.43	18	\$318.46	2010.1	\$43.75	1971.3
As % of AWW:		44.6	5				
Avg. Benefits per First Payment:		\$4,226					

Financial Information

	Past 12 Months	Rank
State Revenues (000):	\$74,953	51
Total Wages (000)**:	\$3,182,743	49
Total Wages (Taxable Employers)(000)**:	\$2,334,056	49
Taxable Wages (000)**:	\$1,601,958	44
Avg. Weekly Wage**:	\$696.66	45
Avg. Tax Rate on Taxable Wages (%) **:	1.25	49
Avg. Tax Rate on Total Wages (%) **:	0.70	34
Calendar Yr Taxable Wage Base:	\$24,700	12
Trust Fund (TF) Balance (000):		
(Including Loans):	\$96,326	24
TF as % of Total Wages*:	1.01	11
Interest Earned (000):	\$1,011	18
Avg. High Cost Multiple +:	1.05	7
High Cost Multiple +:	0.43	13

Labor Force

	(Quarterly)	Past 12 Mos	Rank
IUR (%):	1.1	1.5	52
TUR (%):	3.4	4.0	52
Total Unemp. (000):	12.4	14.6	52
Insured Unemployed (000) ***			
Regular Programs:	3.8	5.3	51
All Programs:	5.7	7.4	51
Reciency Rates (%) ***			
Regular Programs:	31	36	24
All Programs:	46	51	46
Covered Emp. (000)**:	349	342	49
Civ. Labor Force (000):	367	370	48
Subj. Employers (000):	21	21	52

Extended Benefits

	(Quarterly)	Past 12 Months
Extended Benefits (000):	\$0	\$0
EB First Payments:	0	0
EB Weeks Claimed:	0	0
EB Exhaustions:	0	0

Loans

	Rank
Outstanding Loan Bal (000):	\$0 31
Loan per Cov Employee:	\$0 31
Loan as % of Total Wages*:	0.0000 31

* Based on extrapolated wages for the most recent 12 months.

** Wages and Covered Employment lag the rest of the Data Summary information by six months

*** Regular programs include State UI, UCFE and UCX.

+ Refers to most recent calendar year. Fourth and first quarter issues publish measure based on extrapolated wages. Second and third quarter issues publish measure based on actual wages.

See glossary for data definitions

Note: Blank cells appearing in any section of this report indicates that information is unavailable.

UI Data Summary for **Ohio**

CYQ: **2010.4**

Benefits

	(Quarterly)	Past 12 Months	Rank	High Value : Qtr		Low Value : Qtr	
Benefits Paid (000):	\$449,456	\$2,167,459	8	\$915,732	2009.2	\$19,670	1973.3
Initial Claims:	212,505	760,201	10	491,161	1982.4	77,739	1973.2
First Payments:	66,411	308,311	13	262,818	1975.1	29,637	1973.2
Weeks Claimed:	1,495,116	7,459,464	10	3,509,353	1982.1	469,902	1973.3
Wks Compensated:	1,198,338	6,146,618	10	3,169,009	1982.1	351,318	1973.4
Exhaustions:	34,854	175,676	11	85,247	2009.3	6,345	1973.4
Exhaustion Rate:		49.4%	36	49.5%	2010.3	16.5%	2000.4
Average Duration:		19.9	15	22.5	2010.1	10.2	1974.1
AWBA:	\$291.40	\$296.59	27	\$353.57	2010.2	\$49.28	1971.2
As % of AWW:		37.9	25				
Avg. Benefits per First Payment:		\$7,030					

Financial Information

	Past 12 Months	Rank
State Revenues (000):	\$1,254,698	11
Total Wages (000)**:	\$48,178,730	8
Total Wages (Taxable Employers)(000)**:	\$36,823,766	8
Taxable Wages (000)**:	\$7,452,797	12
Avg. Weekly Wage**:	\$782.55	23
Avg. Tax Rate on Taxable Wages (%) **:	3.11	16
Avg. Tax Rate on Total Wages (%) **:	0.75	30
Calendar Yr Taxable Wage Base:	\$9,000	35
Trust Fund (TF) Balance (000):		
(Including Loans):	\$104,059	22
TF as % of Total Wages*:	0.07	29
Interest Earned (000):	\$0	39
Avg. High Cost Multiple +:	N.A.	24
High Cost Multiple +:	N.A.	24

Labor Force

	(Quarterly)	Past 12 Mos	Rank
IUR (%):	2.5	3.0	40
TUR (%):	9.2	10.1	16
Total Unemp. (000):	544.6	594.5	6
Insured Unemployed (000) ***			
Regular Programs:	118.3	146.2	11
All Programs:	292.9	346.0	11
Reciency Rates (%) ***			
Regular Programs:	22	25	45
All Programs:	54	58	33
Covered Emp. (000)**:	4,841	4,809	7
Civ. Labor Force (000):	5,893	5,898	7
Subj. Employers (000):	218	226	8

Extended Benefits

	(Quarterly)	Past 12 Months
Extended Benefits (000):	\$148,490	\$349,321
EB First Payments:	29,205	77,061
EB Weeks Claimed:	519,431	1,079,960
EB Exhaustions:	21,631	47,159

Loans

	Rank
Outstanding Loan Bal (000):	\$2,314,187 7
Loan per Cov Employee:	\$478 11
Loan as % of Total Wages*:	1.5395 12

* Based on extrapolated wages for the most recent 12 months.

** Wages and Covered Employment lag the rest of the Data Summary information by six months

*** Regular programs include State UI, UCFE and UCX.

+ Refers to most recent calendar year. Fourth and first quarter issues publish measure based on extrapolated wages. Second and third quarter issues publish measure based on actual wages.

See glossary for data definitions

Note: Blank cells appearing in any section of this report indicates that information is unavailable.

UI Data Summary for **Oklahoma**

CYQ: **2010.4**

Benefits

	(Quarterly)	Past 12 Months	Rank	High Value : Qtr		Low Value : Qtr	
Benefits Paid (000):	\$86,771	\$400,247	33	\$154,109	2009.2	\$5,871	1972.3
Initial Claims:	45,451	193,975	34	72,345	1982.3	19,985	2000.2
First Payments:	16,754	76,334	37	40,001	1982.4	7,273	1978.3
Weeks Claimed:	380,459	1,703,730	35	623,327	1983.1	130,917	1978.3
Wks Compensated:	322,387	1,456,541	34	552,703	1983.1	86,510	1978.3
Exhaustions:	10,173	47,806	34	22,782	1983.1	2,430	1998.4
Exhaustion Rate:		55.0%	19	59.8%	1983.2	24.7%	2000.4
Average Duration:		19.1	21	20.1	2010.2	10.3	1982.2
AWBA:	\$273.23	\$276.19	32	\$301.63	2009.2	\$14.70	1971.1
As % of AWW:		39.2	22				
Avg. Benefits per First Payment:		\$5,243					

Financial Information

	Past 12 Months	Rank
State Revenues (000):	\$187,475	38
Total Wages (000)**:	\$13,112,343	30
Total Wages (Taxable Employers)(000)**:	\$10,767,635	30
Taxable Wages (000)**:	\$4,859,890	27
Avg. Weekly Wage**:	\$703.87	43
Avg. Tax Rate on Taxable Wages (%) **:	0.90	51
Avg. Tax Rate on Total Wages (%) **:	0.36	52
Calendar Yr Taxable Wage Base:	\$14,900	19
Trust Fund (TF) Balance (000):		
(Including Loans):	\$269,431	11
TF as % of Total Wages*:	0.62	17
Interest Earned (000):	\$3,080	9
Avg. High Cost Multiple +:	0.62	15
High Cost Multiple +:	0.45	12

Labor Force

	(Quarterly)	Past 12 Mos	Rank
IUR (%):	2.2	2.4	45
TUR (%):	6.7	7.1	41
Total Unemp. (000):	116.8	123.8	32
Insured Unemployed (000) ***			
Regular Programs:	31.0	34.9	35
All Programs:	43.5	50.2	36
Reciency Rates (%) ***			
Regular Programs:	27	28	31
All Programs:	37	41	51
Covered Emp. (000)**:	1,443	1,432	29
Civ. Labor Force (000):	1,751	1,755	29
Subj. Employers (000):	83	83	30

Extended Benefits

	(Quarterly)	Past 12 Months
Extended Benefits (000):	\$0	\$0
EB First Payments:	0	0
EB Weeks Claimed:	0	0
EB Exhaustions:	0	0

Loans

	Rank
Outstanding Loan Bal (000):	\$0 31
Loan per Cov Employee:	\$0 31
Loan as % of Total Wages*:	0.0000 31

* Based on extrapolated wages for the most recent 12 months.

** Wages and Covered Employment lag the rest of the Data Summary information by six months

*** Regular programs include State UI, UCFE and UCX.

+ Refers to most recent calendar year. Fourth and first quarter issues publish measure based on extrapolated wages. Second and third quarter issues publish measure based on actual wages.

See glossary for data definitions

Note: Blank cells appearing in any section of this report indicates that information is unavailable.

UI Data Summary for Oregon

CYQ: 2010.4

Benefits

	(Quarterly)	Past 12 Months	Rank	High Value : Qtr		Low Value : Qtr	
Benefits Paid (000):	\$213,938	\$1,038,588	16	\$432,594	2009.2	\$7,771	1972.3
Initial Claims:	138,688	503,435	14	187,800	2009.1	39,945	1972.3
First Payments:	48,839	199,506	16	91,236	2009.1	11,218	1972.3
Weeks Claimed:	895,361	4,231,176	15	1,591,135	2009.1	236,902	1972.3
Wks Compensated:	763,368	3,711,829	15	1,430,426	2009.1	171,876	1972.3
Exhaustions:	25,456	116,422	17	43,089	2009.3	2,889	1973.4
Exhaustion Rate:		52.8%	26	55.0%	2010.2	18.4%	1979.4
Average Duration:		18.6	26	20.5	2010.1	12.0	1980.2
AWBA:	\$291.44	\$289.70	26	\$316.50	2009.2	\$42.83	1971.2
As % of AWW:		37.1	27				
Avg. Benefits per First Payment:		\$5,206					

Financial Information

	Past 12 Months	Rank
State Revenues (000):	\$850,427	15
Total Wages (000)**:	\$15,904,863	26
Total Wages (Taxable Employers)(000)**:	\$11,775,517	28
Taxable Wages (000)**:	\$8,375,686	13
Avg. Weekly Wage**:	\$781.14	25
Avg. Tax Rate on Taxable Wages (%) **:	2.44	23
Avg. Tax Rate on Total Wages (%) **:	1.48	3
Calendar Yr Taxable Wage Base:	\$32,100	5
Trust Fund (TF) Balance (000):		
(Including Loans):	\$910,585	2
TF as % of Total Wages*:	1.91	3
Interest Earned (000):	\$9,799	2
Avg. High Cost Multiple +:	0.76	12
High Cost Multiple +:	0.60	5

Labor Force

	(Quarterly)	Past 12 Mos	Rank
IUR (%):	4.7	5.4	3
TUR (%):	10.3	10.8	8
Total Unemp. (000):	204.2	215.0	24
Insured Unemployed (000) ***			
Regular Programs:	72.7	84.5	15
All Programs:	153.7	172.1	17
Reciency Rates (%) ***			
Regular Programs:	36	39	10
All Programs:	75	80	10
Covered Emp. (000)**:	1,573	1,563	28
Civ. Labor Force (000):	1,989	1,985	27
Subj. Employers (000):	110	110	24

Extended Benefits

	(Quarterly)	Past 12 Months
Extended Benefits (000):	\$64,220	\$200,941
EB First Payments:	11,283	62,271
EB Weeks Claimed:	199,909	638,409
EB Exhaustions:	9,745	21,979

Loans

	Rank
Outstanding Loan Bal (000):	\$0 31
Loan per Cov Employee:	\$0 31
Loan as % of Total Wages*:	0.0000 31

* Based on extrapolated wages for the most recent 12 months.

** Wages and Covered Employment lag the rest of the Data Summary information by six months

*** Regular programs include State UI, UCFE and UCX.

+ Refers to most recent calendar year. Fourth and first quarter issues publish measure based on extrapolated wages. Second and third quarter issues publish measure based on actual wages.

See glossary for data definitions

Note: Blank cells appearing in any section of this report indicates that information is unavailable.

UI Data Summary for **Pennsylvania**

CYQ: **2010.4**

Benefits

	(Quarterly)	Past 12 Months	Rank	High Value : Qtr		Low Value : Qtr	
Benefits Paid (000):	\$749,460	\$3,719,123	3	\$1,388,226	2009.1	\$65,467	1971.3
Initial Claims:	395,536	1,453,404	2	595,313	1982.4	188,957	2000.3
First Payments:	128,351	599,353	3	294,655	1975.1	70,828	1973.2
Weeks Claimed:	3,046,429	13,973,174	3	4,703,536	2009.1	1,301,090	1988.4
Wks Compensated:	2,423,247	11,929,353	3	4,309,149	1983.1	1,122,944	1988.4
Exhaustions:	64,979	304,843	5	122,786	2009.3	15,144	1973.4
Exhaustion Rate:		46.6%	43	47.7%	2010.2	16.7%	1980.1
Average Duration:		19.9	16	21.1	2010.2	13.5	1979.3
AWBA:	\$336.91	\$337.91	8	\$356.18	2009.2	\$50.64	1971.3
As % of AWW:		39.4	18				
Avg. Benefits per First Payment:		\$6,205					

Financial Information

	Past 12 Months	Rank
State Revenues (000):	\$2,477,080	3
Total Wages (000)**:	\$58,999,300	6
Total Wages (Taxable Employers)(000)**:	\$44,325,924	6
Taxable Wages (000)**:	\$6,720,875	11
Avg. Weekly Wage**:	\$858.38	17
Avg. Tax Rate on Taxable Wages (%) **:	5.42	1
Avg. Tax Rate on Total Wages (%) **:	1.09	9
Calendar Yr Taxable Wage Base:	\$8,000	43
Trust Fund (TF) Balance (000):		
(Including Loans):	\$94,082	25
TF as % of Total Wages*:	0.05	31
Interest Earned (000):	\$0	39
Avg. High Cost Multiple +:	N.A.	24
High Cost Multiple +:	N.A.	24

Labor Force

	(Quarterly)	Past 12 Mos	Rank
IUR (%):	4.3	5.0	4
TUR (%):	8.1	8.7	29
Total Unemp. (000):	513.1	549.0	7
Insured Unemployed (000) ***			
Regular Programs:	228.6	268.0	3
All Programs:	459.0	529.1	4
Reciency Rates (%) ***			
Regular Programs:	45	49	3
All Programs:	89	96	3
Covered Emp. (000)**:	5,400	5,335	6
Civ. Labor Force (000):	6,319	6,340	6
Subj. Employers (000):	285	283	6

Extended Benefits

	(Quarterly)	Past 12 Months
Extended Benefits (000):	\$190,842	\$449,568
EB First Payments:	36,015	92,700
EB Weeks Claimed:	524,933	1,240,394
EB Exhaustions:	15,529	43,022

Loans

	Rank
Outstanding Loan Bal (000):	\$3,008,615 4
Loan per Cov Employee:	\$557 6
Loan as % of Total Wages*:	1.6609 7

* Based on extrapolated wages for the most recent 12 months.

** Wages and Covered Employment lag the rest of the Data Summary information by six months

*** Regular programs include State UI, UCFE and UCX.

+ Refers to most recent calendar year. Fourth and first quarter issues publish measure based on extrapolated wages. Second and third quarter issues publish measure based on actual wages.

See glossary for data definitions

Note: Blank cells appearing in any section of this report indicates that information is unavailable.

UI Data Summary for **Puerto Rico**

CYQ: 2010.4

Benefits

	(Quarterly)	Past 12 Months	Rank	High Value : Qtr		Low Value : Qtr	
Benefits Paid (000):	\$65,768	\$293,210	37	\$85,320	2009.3	\$9,234	1971.2
Initial Claims:	35,385	188,212	37	132,965	2006.2	33,814	2007.4
First Payments:	21,599	118,744	33	46,272	1998.4	6,319	1984.1
Weeks Claimed:	631,550	2,776,734	26	922,160	1975.2	341,054	1988.2
Wks Compensated:	579,155	2,569,768	24	760,622	2009.3	198,213	1983.2
Exhaustions:	21,616	79,910	22	26,319	1976.3	3,103	1983.2
Exhaustion Rate:		63.3%	4	98.6%	1984.3	30.3%	1982.2
Average Duration:		21.6	4	39.4	1984.3	13.8	1989.4
AWBA:	\$117.87	\$118.32	53	\$118.82	2010.2	\$29.70	1971.1
As % of AWW:		23.8	52				
Avg. Benefits per First Payment:		\$2,469					

Financial Information

	Past 12 Months	Rank
State Revenues (000):	\$183,881	40
Total Wages (000)**:	\$5,730,888	40
Total Wages (Taxable Employers)(000)**:	\$3,825,781	43
Taxable Wages (000)**:	\$1,277,281	46
Avg. Weekly Wage**:	\$497.55	53
Avg. Tax Rate on Taxable Wages (%) **:	3.23	12
Avg. Tax Rate on Total Wages (%) **:	1.02	13
Calendar Yr Taxable Wage Base:	\$7,000	50
Trust Fund (TF) Balance (000):		
(Including Loans):	\$294,276	8
TF as % of Total Wages*:	1.87	5
Interest Earned (000):	\$3,186	8
Avg. High Cost Multiple +:	0.7	13
High Cost Multiple +:	0.42	14

Labor Force

	(Quarterly)	Past 12 Mos	Rank
IUR (%):	5.4	6.0	1
TUR (%):	15.3	16.1	1
Total Unemp. (000):	197.4	208.7	25
Insured Unemployed (000) ***			
Regular Programs:	50.3	55.1	26
All Programs:	110.3	119.7	25
Reciency Rates (%) ***			
Regular Programs:	25	26	35
All Programs:	56	57	29
Covered Emp. (000)**:	915	924	36
Civ. Labor Force (000):	1,291	1,297	36
Subj. Employers (000):	50	62	37

Extended Benefits

	(Quarterly)	Past 12 Months
Extended Benefits (000):	\$38,265	\$78,300
EB First Payments:	26,599	64,729
EB Weeks Claimed:	317,982	666,389
EB Exhaustions:	21,877	40,555

Loans

	Rank
Outstanding Loan Bal (000):	\$0 31
Loan per Cov Employee:	\$0 31
Loan as % of Total Wages*:	0.0000 31

* Based on extrapolated wages for the most recent 12 months.

** Wages and Covered Employment lag the rest of the Data Summary information by six months

*** Regular programs include State UI, UCFE and UCX.

+ Refers to most recent calendar year. Fourth and first quarter issues publish measure based on extrapolated wages. Second and third quarter issues publish measure based on actual wages.

See glossary for data definitions

Note: Blank cells appearing in any section of this report indicates that information is unavailable.

UI Data Summary for **Rhode Island**

CYQ: 2010.4

Benefits

	(Quarterly)	Past 12 Months	Rank	High Value : Qtr		Low Value : Qtr	
Benefits Paid (000):	\$61,576	\$304,743	38	\$121,114	2009.1	\$6,858	1972.4
Initial Claims:	26,364	96,861	44	102,513	1978.2	14,082	1989.1
First Payments:	10,550	48,750	43	51,557	1978.2	6,427	1988.2
Weeks Claimed:	188,663	924,430	43	508,725	1975.1	104,435	1987.4
Wks Compensated:	169,659	837,556	43	444,513	1975.1	85,635	1987.4
Exhaustions:	6,277	27,881	40	12,648	1975.2	1,870	1987.4
Exhaustion Rate:		57.6%	14	62.5%	2009.3	18.6%	1979.1
Average Duration:		17.2	38	19.5	2010.1	9.2	1979.1
AWBA:	\$381.47	\$380.40	4	\$391.01	2009.4	\$54.10	1971.3
As % of AWW:		45.9	2				
Avg. Benefits per First Payment:		\$6,251					

Financial Information

	Past 12 Months	Rank
State Revenues (000):	\$232,973	34
Total Wages (000)**:	\$4,664,835	45
Total Wages (Taxable Employers)(000)**:	\$3,298,563	46
Taxable Wages (000)**:	\$1,630,803	43
Avg. Weekly Wage**:	\$829.46	19
Avg. Tax Rate on Taxable Wages (%) **:	3.59	7
Avg. Tax Rate on Total Wages (%) **:	1.50	2
Calendar Yr Taxable Wage Base:	\$19,000	17
Trust Fund (TF) Balance (000):		
(Including Loans):	\$37,169	33
TF as % of Total Wages*:	0.27	20
Interest Earned (000):	\$0	39
Avg. High Cost Multiple +:	N.A.	24
High Cost Multiple +:	N.A.	24

Labor Force

	(Quarterly)	Past 12 Mos	Rank
IUR (%):	3.4	4.1	18
TUR (%):	11.0	11.6	5
Total Unemp. (000):	63.3	67.0	40
Insured Unemployed (000) ***			
Regular Programs:	14.8	17.9	44
All Programs:	32.8	37.4	40
Reciency Rates (%) ***			
Regular Programs:	23	27	43
All Programs:	52	56	37
Covered Emp. (000)**:	440	436	45
Civ. Labor Force (000):	577	576	44
Subj. Employers (000):	33	33	45

Extended Benefits

	(Quarterly)	Past 12 Months
Extended Benefits (000):	\$21,992	\$75,909
EB First Payments:	3,151	15,143
EB Weeks Claimed:	59,247	206,238
EB Exhaustions:	5,897	10,206

Loans

	Rank
Outstanding Loan Bal (000):	\$225,473 23
Loan per Cov Employee:	\$512 8
Loan as % of Total Wages*:	1.6572 8

* Based on extrapolated wages for the most recent 12 months.

** Wages and Covered Employment lag the rest of the Data Summary information by six months

*** Regular programs include State UI, UCFE and UCX.

+ Refers to most recent calendar year. Fourth and first quarter issues publish measure based on extrapolated wages. Second and third quarter issues publish measure based on actual wages.

See glossary for data definitions

Note: Blank cells appearing in any section of this report indicates that information is unavailable.

UI Data Summary for **South Carolina**

CYQ: **2010.4**

Benefits

	(Quarterly)	Past 12 Months	Rank	High Value : Qtr		Low Value : Qtr	
Benefits Paid (000):	\$119,264	\$574,005	27	\$259,328	2009.2	\$4,284	1973.3
Initial Claims:	82,888	319,239	24	259,218	1982.1	17,287	1973.2
First Payments:	33,994	149,306	25	132,837	1975.1	6,914	1972.4
Weeks Claimed:	749,235	3,450,953	22	1,265,719	2009.1	119,478	1973.2
Wks Compensated:	536,851	2,537,639	27	1,076,133	2009.1	93,407	1973.3
Exhaustions:	19,529	95,505	25	37,591	2009.3	2,196	1973.4
Exhaustion Rate:		55.8%	17	57.0%	2009.2	17.7%	1990.2
Average Duration:		17.0	39	18.9	2010.1	7.9	1975.1
AWBA:	\$232.62	\$236.41	47	\$255.57	2009.2	\$41.67	1971.1
As % of AWW:		33.5	36				
Avg. Benefits per First Payment:		\$3,844					

Financial Information

	Past 12 Months	Rank
State Revenues (000):	\$289,261	31
Total Wages (000)**:	\$15,877,620	27
Total Wages (Taxable Employers)(000)**:	\$12,359,831	26
Taxable Wages (000)**:	\$2,107,198	33
Avg. Weekly Wage**:	\$705.06	42
Avg. Tax Rate on Taxable Wages (%) **:	2.25	30
Avg. Tax Rate on Total Wages (%) **:	0.50	42
Calendar Yr Taxable Wage Base:	\$7,000	50
Trust Fund (TF) Balance (000):		
(Including Loans):	\$6,990	47
TF as % of Total Wages*:	0.01	47
Interest Earned (000):	\$0	39
Avg. High Cost Multiple +:	N.A.	24
High Cost Multiple +:	N.A.	24

Labor Force

	(Quarterly)	Past 12 Mos	Rank
IUR (%):	3.6	4.2	12
TUR (%):	10.8	11.2	6
Total Unemp. (000):	232.5	241.8	19
Insured Unemployed (000) ***			
Regular Programs:	62.5	71.5	21
All Programs:	128.1	144.1	23
Reciency Rates (%) ***			
Regular Programs:	27	30	29
All Programs:	55	60	30
Covered Emp. (000)**:	1,739	1,718	25
Civ. Labor Force (000):	2,150	2,165	23
Subj. Employers (000):	98	98	26

Extended Benefits

	(Quarterly)	Past 12 Months
Extended Benefits (000):	\$37,602	\$92,022
EB First Payments:	8,013	25,054
EB Weeks Claimed:	164,599	412,655
EB Exhaustions:	6,992	13,907

Loans

	Rank
Outstanding Loan Bal (000):	\$886,662 12
Loan per Cov Employee:	\$510 9
Loan as % of Total Wages*:	1.7943 5

* Based on extrapolated wages for the most recent 12 months.

** Wages and Covered Employment lag the rest of the Data Summary information by six months

*** Regular programs include State UI, UCFE and UCX.

+ Refers to most recent calendar year. Fourth and first quarter issues publish measure based on extrapolated wages. Second and third quarter issues publish measure based on actual wages.

See glossary for data definitions

Note: Blank cells appearing in any section of this report indicates that information is unavailable.

UI Data Summary for **South Dakota**

 CYQ: **2010.4**

Benefits

	(Quarterly)	Past 12 Months	Rank	High Value : Qtr		Low Value : Qtr	
Benefits Paid (000):	\$8,333	\$47,057	52	\$20,469	2010.1	\$448	1971.3
Initial Claims:	8,973	27,728	52	13,637	1978.4	2,200	1971.2
First Payments:	3,064	13,014	52	6,941	2009.1	1,008	2007.3
Weeks Claimed:	43,524	231,890	52	96,927	2010.1	16,839	1971.3
Wks Compensated:	32,716	187,928	52	80,547	2010.1	12,003	1971.3
Exhaustions:	654	3,713	52	1,370	1975.2	105	2000.3
Exhaustion Rate:		25.2%	53	33.5%	1975.2	7.3%	2000.4
Average Duration:		14.4	52	15.2	2010.2	9.8	2001.1
AWBA:	\$244.06	\$251.12	42	\$259.32	2010.1	\$39.50	1971.3
As % of AWW:		39.6	17				
Avg. Benefits per First Payment:		\$3,616					

Financial Information

	Past 12 Months	Rank
State Revenues (000):	\$73,571	52
Total Wages (000)**:	\$3,055,072	50
Total Wages (Taxable Employers)(000)**:	\$2,277,275	50
Taxable Wages (000)**:	\$699,614	51
Avg. Weekly Wage**:	\$633.50	52
Avg. Tax Rate on Taxable Wages (%) **:	2.28	28
Avg. Tax Rate on Total Wages (%) **:	0.73	31
Calendar Yr Taxable Wage Base:	\$10,000	30
Trust Fund (TF) Balance (000):		
(Including Loans):	\$25,767	37
TF as % of Total Wages*:	0.28	19
Interest Earned (000):	\$292	22
Avg. High Cost Multiple +:	0.51	17
High Cost Multiple +:	0.26	17

Labor Force

	(Quarterly)	Past 12 Mos	Rank
IUR (%):	0.9	1.2	53
TUR (%):	4.5	4.8	50
Total Unemp. (000):	19.9	21.5	49
Insured Unemployed (000) ***			
Regular Programs:	3.4	4.6	52
All Programs:	4.8	6.2	52
Reciency Rates (%) ***			
Regular Programs:	17	21	52
All Programs:	24	29	53
Covered Emp. (000)**:	381	376	48
Civ. Labor Force (000):	443	444	46
Subj. Employers (000):	25	25	49

Extended Benefits

	(Quarterly)	Past 12 Months
Extended Benefits (000):	\$0	\$0
EB First Payments:	0	0
EB Weeks Claimed:	0	0
EB Exhaustions:	0	0

Loans

	Rank
Outstanding Loan Bal (000):	\$0 31
Loan per Cov Employee:	\$0 31
Loan as % of Total Wages*:	0.0000 31

* Based on extrapolated wages for the most recent 12 months.

** Wages and Covered Employment lag the rest of the Data Summary information by six months

*** Regular programs include State UI, UCFE and UCX.

+ Refers to most recent calendar year. Fourth and first quarter issues publish measure based on extrapolated wages. Second and third quarter issues publish measure based on actual wages.

See glossary for data definitions

Note: Blank cells appearing in any section of this report indicates that information is unavailable.

UI Data Summary for **Tennessee**

CYQ: 2010.4

Benefits

	(Quarterly)	Past 12 Months	Rank	High Value : Qtr		Low Value : Qtr	
Benefits Paid (000):	\$153,348	\$705,975	24	\$313,555	2009.2	\$7,536	1972.4
Initial Claims:	102,376	411,700	19	279,757	1982.1	27,840	1973.2
First Payments:	41,350	193,834	20	121,148	1975.1	14,013	1972.4
Weeks Claimed:	735,703	3,465,816	23	1,526,707	1975.1	231,044	1972.4
Wks Compensated:	669,255	3,209,524	21	1,408,685	2009.1	170,977	1972.4
Exhaustions:	24,652	111,383	18	46,979	2009.3	4,037	1973.4
Exhaustion Rate:		53.0%	25	53.7%	2010.1	19.6%	1984.3
Average Duration:		16.6	43	19.0	2010.1	8.8	1990.4
AWBA:	\$232.89	\$223.44	46	\$232.89	2010.4	\$41.43	1971.1
As % of AWW:		28.9	45				
Avg. Benefits per First Payment:		\$3,642					

Financial Information

	Past 12 Months	Rank
State Revenues (000):	\$701,813	18
Total Wages (000)**:	\$25,089,551	19
Total Wages (Taxable Employers)(000)**:	\$20,245,714	17
Taxable Wages (000)**:	\$4,279,903	21
Avg. Weekly Wage**:	\$774.21	27
Avg. Tax Rate on Taxable Wages (%) **:	3.15	14
Avg. Tax Rate on Total Wages (%) **:	0.80	24
Calendar Yr Taxable Wage Base:	\$9,000	35
Trust Fund (TF) Balance (000):		
(Including Loans):	\$159,482	18
TF as % of Total Wages*:	0.19	22
Interest Earned (000):	\$2,038	14
Avg. High Cost Multiple +:	0.19	19
High Cost Multiple +:	0.09	20

Labor Force

	(Quarterly)	Past 12 Mos	Rank
IUR (%):	2.4	2.8	41
TUR (%):	9.1	9.7	20
Total Unemp. (000):	279.2	297.5	15
Insured Unemployed (000) ***			
Regular Programs:	59.6	69.4	22
All Programs:	142.9	164.4	18
Reciency Rates (%) ***			
Regular Programs:	21	23	46
All Programs:	51	55	40
Covered Emp. (000)**:	2,519	2,497	19
Civ. Labor Force (000):	3,065	3,057	17
Subj. Employers (000):	112	112	23

Extended Benefits

	(Quarterly)	Past 12 Months
Extended Benefits (000):	\$59,059	\$164,323
EB First Payments:	13,382	58,286
EB Weeks Claimed:	263,840	808,214
EB Exhaustions:	19,158	114,739

Loans

	Rank
Outstanding Loan Bal (000):	\$0 31
Loan per Cov Employee:	\$0 31
Loan as % of Total Wages*:	0.0000 31

* Based on extrapolated wages for the most recent 12 months.

** Wages and Covered Employment lag the rest of the Data Summary information by six months

*** Regular programs include State UI, UCFE and UCX.

+ Refers to most recent calendar year. Fourth and first quarter issues publish measure based on extrapolated wages. Second and third quarter issues publish measure based on actual wages.

See glossary for data definitions

Note: Blank cells appearing in any section of this report indicates that information is unavailable.

UI Data Summary for **Texas**

 CYQ: **2010.4**

Benefits

	(Quarterly)	Past 12 Months	Rank	High Value : Qtr		Low Value : Qtr	
Benefits Paid (000):	\$650,466	\$2,968,815	5	\$1,099,829	2009.3	\$15,273	1973.4
Initial Claims:	238,710	996,049	7	342,271	2009.1	59,692	1973.3
First Payments:	127,352	544,794	4	196,709	2009.2	24,909	1973.2
Weeks Claimed:	2,504,288	11,162,345	6	3,784,483	2009.3	377,514	1973.3
Wks Compensated:	2,183,219	9,835,128	5	3,487,249	2009.3	306,120	1973.4
Exhaustions:	74,831	343,577	4	126,250	2009.3	9,367	1973.4
Exhaustion Rate:		56.2%	16	67.2%	2002.1	29.7%	1982.2
Average Duration:		18.1	30	19.2	2010.2	10.7	1975.1
AWBA:	\$312.60	\$316.07	15	\$330.08	2009.2	\$40.91	1971.3
As % of AWW:		36.0	31				
Avg. Benefits per First Payment:		\$5,449					

Financial Information

	Past 12 Months	Rank
State Revenues (000):	\$2,395,390	4
Total Wages (000)**:	\$111,065,729	3
Total Wages (Taxable Employers)(000)**:	\$91,886,931	2
Taxable Wages (000)**:	\$16,565,811	2
Avg. Weekly Wage**:	\$879.07	14
Avg. Tax Rate on Taxable Wages (%) **:	2.51	22
Avg. Tax Rate on Total Wages (%) **:	0.56	40
Calendar Yr Taxable Wage Base:	\$9,000	35
Trust Fund (TF) Balance (000):		
(Including Loans):	\$292,901	9
TF as % of Total Wages*:	0.08	28
Interest Earned (000):	\$649	21
Avg. High Cost Multiple +:	N.A.	21
High Cost Multiple +:	N.A.	21

Labor Force

	(Quarterly)	Past 12 Mos	Rank
IUR (%):	2.0	2.2	48
TUR (%):	8.1	8.2	31
Total Unemp. (000):	982.7	994.5	3
Insured Unemployed (000) ***			
Regular Programs:	199.0	220.4	5
All Programs:	432.3	471.9	5
Reciency Rates (%) ***			
Regular Programs:	20	22	48
All Programs:	44	47	47
Covered Emp. (000)**:	9,984	9,898	2
Civ. Labor Force (000):	12,192	12,136	2
Subj. Employers (000):	454	454	4

Extended Benefits

	(Quarterly)	Past 12 Months
Extended Benefits (000):	\$212,128	\$586,239
EB First Payments:	41,512	138,728
EB Weeks Claimed:	774,814	2,004,264
EB Exhaustions:	34,015	88,785

Loans

	Rank
Outstanding Loan Bal (000):	\$0 31
Loan per Cov Employee:	\$0 31
Loan as % of Total Wages*:	0.0000 31

* Based on extrapolated wages for the most recent 12 months.

** Wages and Covered Employment lag the rest of the Data Summary information by six months

*** Regular programs include State UI, UCFE and UCX.

+ Refers to most recent calendar year. Fourth and first quarter issues publish measure based on extrapolated wages. Second and third quarter issues publish measure based on actual wages.

See glossary for data definitions

Note: Blank cells appearing in any section of this report indicates that information is unavailable.

UI Data Summary for **Utah**

 CYQ: **2010.4**

Benefits

	(Quarterly)	Past 12 Months	Rank	High Value : Qtr		Low Value : Qtr	
Benefits Paid (000):	\$74,040	\$377,550	35	\$139,428	2009.2	\$3,256	1973.3
Initial Claims:	36,436	133,055	36	48,321	2009.1	10,343	1973.2
First Payments:	17,545	74,936	35	32,959	2009.1	4,234	2006.3
Weeks Claimed:	291,942	1,417,727	36	499,265	2009.2	78,788	1973.3
Wks Compensated:	244,126	1,228,540	37	441,661	2009.2	60,361	1973.3
Exhaustions:	8,906	44,688	36	15,073	2009.3	1,303	1973.3
Exhaustion Rate:		52.7%	27	65.1%	2009.3	20.5%	1978.3
Average Duration:		16.4	44	18.2	2009.3	10.7	1996.3
AWBA:	\$311.94	\$315.61	16	\$322.40	2009.2	\$44.14	1971.2
As % of AWW:		43.1	8				
Avg. Benefits per First Payment:		\$5,038					

Financial Information

	Past 12 Months	Rank
State Revenues (000):	\$154,807	42
Total Wages (000)**:	\$10,393,711	33
Total Wages (Taxable Employers)(000)**:	\$8,276,606	33
Taxable Wages (000)**:	\$5,680,103	23
Avg. Weekly Wage**:	\$731.52	36
Avg. Tax Rate on Taxable Wages (%) **:	0.67	52
Avg. Tax Rate on Total Wages (%) **:	0.39	47
Calendar Yr Taxable Wage Base:	\$28,300	7
Trust Fund (TF) Balance (000):		
(Including Loans):	\$312,720	5
TF as % of Total Wages*:	0.93	13
Interest Earned (000):	\$3,459	5
Avg. High Cost Multiple +:	0.81	10
High Cost Multiple +:	0.46	11

Labor Force

	(Quarterly)	Past 12 Mos	Rank
IUR (%):	2.1	2.5	47
TUR (%):	7.3	7.8	37
Total Unemp. (000):	98.7	106.0	35
Insured Unemployed (000) ***			
Regular Programs:	23.3	28.2	36
All Programs:	43.1	51.6	37
Reciency Rates (%) ***			
Regular Programs:	24	27	40
All Programs:	44	49	48
Covered Emp. (000)**:	1,114	1,109	33
Civ. Labor Force (000):	1,359	1,368	32
Subj. Employers (000):	68	68	34

Extended Benefits

	(Quarterly)	Past 12 Months
Extended Benefits (000):	\$0	\$0
EB First Payments:	0	0
EB Weeks Claimed:	0	0
EB Exhaustions:	0	0

Loans

	Rank
Outstanding Loan Bal (000):	\$0 31
Loan per Cov Employee:	\$0 31
Loan as % of Total Wages*:	0.0000 31

* Based on extrapolated wages for the most recent 12 months.

** Wages and Covered Employment lag the rest of the Data Summary information by six months

*** Regular programs include State UI, UCFE and UCX.

+ Refers to most recent calendar year. Fourth and first quarter issues publish measure based on extrapolated wages. Second and third quarter issues publish measure based on actual wages.

See glossary for data definitions

Note: Blank cells appearing in any section of this report indicates that information is unavailable.

UI Data Summary for **Vermont**

CYQ: 2010.4

Benefits

	(Quarterly)	Past 12 Months	Rank	High Value : Qtr		Low Value : Qtr	
Benefits Paid (000):	\$28,461	\$147,461	49	\$60,013	2009.1	\$2,018	1973.3
Initial Claims:	18,424	55,231	47	21,356	1982.4	4,424	1988.3
First Payments:	7,512	29,008	46	14,565	2009.1	2,057	1988.3
Weeks Claimed:	113,850	561,329	49	217,025	2009.1	34,974	1988.3
Wks Compensated:	103,891	525,231	49	198,291	2009.1	29,653	1988.3
Exhaustions:	2,422	10,504	49	4,369	2009.3	400	1989.1
Exhaustion Rate:		33.1%	52	37.4%	1976.1	11.8%	2000.4
Average Duration:		18.1	29	19.2	2010.1	11.4	1989.4
AWBA:	\$291.52	\$296.67	25	\$312.51	2009.1	\$53.47	1971.1
As % of AWW:		40.0	15				
Avg. Benefits per First Payment:		\$5,083					

Financial Information

	Past 12 Months	Rank
State Revenues (000):	\$87,556	50
Total Wages (000)**:	\$2,737,263	51
Total Wages (Taxable Employers)(000)**:	\$1,867,014	52
Taxable Wages (000)**:	\$463,195	52
Avg. Weekly Wage**:	\$742.28	34
Avg. Tax Rate on Taxable Wages (%) **:	3.33	11
Avg. Tax Rate on Total Wages (%) **:	0.92	16
Calendar Yr Taxable Wage Base:	\$10,000	30
Trust Fund (TF) Balance (000):		
(Including Loans):	\$1,363	51
TF as % of Total Wages*:	0.02	41
Interest Earned (000):	\$0	39
Avg. High Cost Multiple +:	N.A.	24
High Cost Multiple +:	N.A.	24

Labor Force

	(Quarterly)	Past 12 Mos	Rank
IUR (%):	3.0	3.6	25
TUR (%):	5.5	6.2	48
Total Unemp. (000):	19.8	22.5	50
Insured Unemployed (000) ***			
Regular Programs:	8.5	10.3	48
All Programs:	12.1	17.1	49
Reciency Rates (%) ***			
Regular Programs:	43	46	4
All Programs:	61	76	20
Covered Emp. (000)**:	282	284	51
Civ. Labor Force (000):	361	361	49
Subj. Employers (000):	22	22	51

Extended Benefits

	(Quarterly)	Past 12 Months
Extended Benefits (000):	\$0	\$3,542
EB First Payments:	1	2,026
EB Weeks Claimed:	1	11,789
EB Exhaustions:	0	342

Loans

	Rank
Outstanding Loan Bal (000):	\$38,475 27
Loan per Cov Employee:	\$136 24
Loan as % of Total Wages*:	0.5041 23

* Based on extrapolated wages for the most recent 12 months.

** Wages and Covered Employment lag the rest of the Data Summary information by six months

*** Regular programs include State UI, UCFE and UCX.

+ Refers to most recent calendar year. Fourth and first quarter issues publish measure based on extrapolated wages. Second and third quarter issues publish measure based on actual wages.

See glossary for data definitions

Note: Blank cells appearing in any section of this report indicates that information is unavailable.

UI Data Summary for **Virgin Islands**

CYQ: 2010.4

Benefits

	(Quarterly)	Past 12 Months	Rank	High Value : Qtr		Low Value : Qtr	
Benefits Paid (000):	\$3,289	\$12,761	53	\$21,838	2002.4	\$277	1988.1
Initial Claims:	989	4,259	53	3,877	1995.4	332	2000.1
First Payments:	806	2,496	53	3,838	1995.4	107	1978.1
Weeks Claimed:	13,290	50,279	53	25,858	1994.1	215	1974.3
Wks Compensated:	11,883	44,785	53	37,242	1995.4	2,660	1988.1
Exhaustions:	348	1,631	53	1,170	1994.2	51	1978.1
Exhaustion Rate:		58.0%	12	70.6%	2003.3	20.5%	1991.1
Average Duration:		17.9	31	41.3	1978.1	10.9	1991.1
AWBA:	\$295.49	\$301.83	21	\$340.36	2009.3	\$62.61	1978.4
As % of AWW:		42.4	10				
Avg. Benefits per First Payment:		\$5,113					

Financial Information

	Past 12 Months	Rank
State Revenues (000):	\$1,243	53
Total Wages (000)**:	\$388,692	53
Total Wages (Taxable Employers)(000)**:	\$256,729	53
Taxable Wages (000)**:	\$161,989	53
Avg. Weekly Wage**:	\$712.49	41
Avg. Tax Rate on Taxable Wages (%) **:	0.20	53
Avg. Tax Rate on Total Wages (%) **:	0.12	53
Calendar Yr Taxable Wage Base:	\$22,200	14
Trust Fund (TF) Balance (000):		
(Including Loans):	\$194	53
TF as % of Total Wages*:	0.02	40
Interest Earned (000):	\$0	39
Avg. High Cost Multiple +:	N.A.	24
High Cost Multiple +:	N.A.	24

Labor Force

	(Quarterly)	Past 12 Mos	Rank
IUR (%):	2.3	2.1	42
TUR (%):			
Total Unemp. (000):			
Insured Unemployed (000) ***			
Regular Programs:	1.0	0.9	53
All Programs:	1.9	1.9	53
Reciency Rates (%) ***			
Regular Programs:			53
All Programs:			
Covered Emp. (000)**:	43	43	53
Civ. Labor Force (000):			
Subj. Employers (000):	131	35	19

Extended Benefits

	(Quarterly)	Past 12 Months
Extended Benefits (000):	\$0	\$0
EB First Payments:	0	0
EB Weeks Claimed:	0	0
EB Exhaustions:	0	0

Loans

	Rank
Outstanding Loan Bal (000):	\$17,389 29
Loan per Cov Employee:	\$404 14
Loan as % of Total Wages*:	1.6614 6

* Based on extrapolated wages for the most recent 12 months.

** Wages and Covered Employment lag the rest of the Data Summary information by six months

*** Regular programs include State UI, UCFE and UCX.

+ Refers to most recent calendar year. Fourth and first quarter issues publish measure based on extrapolated wages. Second and third quarter issues publish measure based on actual wages.

See glossary for data definitions

Note: Blank cells appearing in any section of this report indicates that information is unavailable.

UI Data Summary for **Virginia**

CYQ: 2010.4

Benefits

	(Quarterly)	Past 12 Months	Rank	High Value : Qtr		Low Value : Qtr	
Benefits Paid (000):	\$158,921	\$748,099	23	\$335,521	2009.2	\$2,738	1972.4
Initial Claims:	102,018	412,948	20	185,586	1991.1	16,939	1973.2
First Payments:	41,936	177,577	18	96,342	1975.1	5,286	1973.3
Weeks Claimed:	701,513	3,297,527	25	1,192,693	2009.2	83,251	1972.4
Wks Compensated:	587,084	2,721,002	23	1,032,155	2009.2	52,602	1972.4
Exhaustions:	19,616	95,432	24	35,738	2009.3	1,301	1972.4
Exhaustion Rate:		50.1%	33	53.4%	2010.1	14.3%	1990.3
Average Duration:		15.3	48	17.0	2010.1	7.5	1990.1
AWBA:	\$285.47	\$288.48	30	\$314.67	2009.3	\$45.63	1971.3
As % of AWW:		31.9	39				
Avg. Benefits per First Payment:		\$4,213					

Financial Information

	Past 12 Months	Rank
State Revenues (000):	\$530,590	22
Total Wages (000)**:	\$39,304,880	11
Total Wages (Taxable Employers)(000)**:	\$32,630,690	10
Taxable Wages (000)**:	\$4,545,764	17
Avg. Weekly Wage**:	\$905.26	11
Avg. Tax Rate on Taxable Wages (%) **:	1.88	40
Avg. Tax Rate on Total Wages (%) **:	0.36	50
Calendar Yr Taxable Wage Base:	\$8,000	43
Trust Fund (TF) Balance (000):		
(Including Loans):	\$63,269	28
TF as % of Total Wages*:	0.05	33
Interest Earned (000):	\$0	39
Avg. High Cost Multiple +:	N.A.	24
High Cost Multiple +:	N.A.	24

Labor Force

	(Quarterly)	Past 12 Mos	Rank
IUR (%):	1.6	1.9	50
TUR (%):	6.4	6.9	44
Total Unemp. (000):	267.6	289.2	18
Insured Unemployed (000) ***			
Regular Programs:	54.5	63.4	25
All Programs:	93.1	104.6	29
Reciency Rates (%) ***			
Regular Programs:	20	22	47
All Programs:	35	36	52
Covered Emp. (000)**:	3,389	3,356	12
Civ. Labor Force (000):	4,163	4,185	12
Subj. Employers (000):	190	190	14

Extended Benefits

	(Quarterly)	Past 12 Months
Extended Benefits (000):	\$21,311	\$66,987
EB First Payments:	7,032	26,502
EB Weeks Claimed:	80,386	248,960
EB Exhaustions:	6,871	20,515

Loans

	Rank
Outstanding Loan Bal (000):	\$346,892 20
Loan per Cov Employee:	\$102 27
Loan as % of Total Wages*:	0.2637 27

* Based on extrapolated wages for the most recent 12 months.

** Wages and Covered Employment lag the rest of the Data Summary information by six months

*** Regular programs include State UI, UCFE and UCX.

+ Refers to most recent calendar year. Fourth and first quarter issues publish measure based on extrapolated wages. Second and third quarter issues publish measure based on actual wages.

See glossary for data definitions

Note: Blank cells appearing in any section of this report indicates that information is unavailable.

UI Data Summary for Washington

CYQ: 2010.4

Benefits

	(Quarterly)	Past 12 Months	Rank	High Value : Qtr		Low Value : Qtr	
Benefits Paid (000):	\$360,763	\$1,819,935	12	\$658,120	2009.2	\$28,236	1972.3
Initial Claims:	180,683	617,353	12	211,746	2008.4	76,810	1979.2
First Payments:	67,971	263,691	12	111,654	2009.1	26,788	1979.2
Weeks Claimed:	1,210,328	5,679,833	14	1,883,298	2009.2	459,778	1979.3
Wks Compensated:	1,065,215	5,152,954	13	1,732,957	2009.2	353,807	1979.3
Exhaustions:	27,021	140,389	15	48,148	2009.3	5,488	1979.3
Exhaustion Rate:		46.7%	42	50.6%	2010.2	19.2%	1980.1
Average Duration:		19.5	19	20.5	2010.2	12.4	1979.4
AWBA:	\$366.79	\$383.95	5	\$423.36	2009.3	\$57.77	1972.3
As % of AWW:		42.3	11				
Avg. Benefits per First Payment:		\$6,902					

Financial Information

	Past 12 Months	Rank
State Revenues (000):	\$1,401,762	9
Total Wages (000)**:	\$31,500,076	14
Total Wages (Taxable Employers)(000)**:	\$24,024,172	14
Taxable Wages (000)**:	\$16,751,469	4
Avg. Weekly Wage**:	\$907.34	10
Avg. Tax Rate on Taxable Wages (%) **:	1.94	38
Avg. Tax Rate on Total Wages (%) **:	1.14	6
Calendar Yr Taxable Wage Base:	\$37,300	1
Trust Fund (TF) Balance (000):		
(Including Loans):	\$2,392,336	1
TF as % of Total Wages*:	2.43	1
Interest Earned (000):	\$25,031	1
Avg. High Cost Multiple +:	1.12	4
High Cost Multiple +:	0.63	4

Labor Force

	(Quarterly)	Past 12 Mos	Rank
IUR (%):	3.5	4.1	16
TUR (%):	9.1	9.6	19
Total Unemp. (000):	321.5	339.5	12
Insured Unemployed (000) ***			
Regular Programs:	95.6	111.3	14
All Programs:	207.9	229.2	13
Reciency Rates (%) ***			
Regular Programs:	30	33	25
All Programs:	65	68	18
Covered Emp. (000)**:	2,734	2,732	14
Civ. Labor Force (000):	3,527	3,532	13
Subj. Employers (000):	213	211	9

Extended Benefits

	(Quarterly)	Past 12 Months
Extended Benefits (000):	\$104,998	\$265,989
EB First Payments:	13,748	49,667
EB Weeks Claimed:	262,331	692,887
EB Exhaustions:	12,003	26,108

Loans

	Rank
Outstanding Loan Bal (000):	\$0 31
Loan per Cov Employee:	\$0 31
Loan as % of Total Wages*:	0.0000 31

* Based on extrapolated wages for the most recent 12 months.

** Wages and Covered Employment lag the rest of the Data Summary information by six months

*** Regular programs include State UI, UCFE and UCX.

+ Refers to most recent calendar year. Fourth and first quarter issues publish measure based on extrapolated wages. Second and third quarter issues publish measure based on actual wages.

See glossary for data definitions

Note: Blank cells appearing in any section of this report indicates that information is unavailable.

UI Data Summary for **West Virginia**

CYQ: 2010.4

Benefits

	(Quarterly)	Past 12 Months	Rank	High Value : Qtr		Low Value : Qtr	
Benefits Paid (000):	\$47,603	\$244,621	41	\$98,566	1983.1	\$3,940	1971.3
Initial Claims:	26,458	103,725	43	70,987	1977.1	13,253	2006.2
First Payments:	13,396	58,082	38	53,519	1977.1	7,534	2004.3
Weeks Claimed:	230,122	1,132,982	39	798,811	1983.1	136,981	1973.3
Wks Compensated:	199,799	1,006,251	40	723,321	1983.1	106,340	1973.3
Exhaustions:	4,931	24,699	42	14,289	1983.2	1,743	1971.2
Exhaustion Rate:		38.0%	50	42.1%	1983.3	12.3%	1979.1
Average Duration:		17.3	36	21.7	1983.4	9.3	1977.4
AWBA:	\$266.03	\$255.12	38	\$280.57	2009.3	\$36.07	1971.1
As % of AWW:		37.0	28				
Avg. Benefits per First Payment:		\$4,212					

Financial Information

	Past 12 Months	Rank
State Revenues (000):	\$198,233	37
Total Wages (000)**:	\$6,142,476	41
Total Wages (Taxable Employers)(000)**:	\$4,486,887	40
Taxable Wages (000)**:	\$1,578,830	42
Avg. Weekly Wage**:	\$690.31	47
Avg. Tax Rate on Taxable Wages (%) **:	2.88	20
Avg. Tax Rate on Total Wages (%) **:	1.03	12
Calendar Yr Taxable Wage Base:	\$12,000	25
Trust Fund (TF) Balance (000):		
(Including Loans):	\$76,837	27
TF as % of Total Wages*:	0.43	18
Interest Earned (000):	\$934	20
Avg. High Cost Multiple +:	0.27	18
High Cost Multiple +:	0.11	18

Labor Force

	(Quarterly)	Past 12 Mos	Rank
IUR (%):	2.7	3.3	32
TUR (%):	9.0	9.1	21
Total Unemp. (000):	70.2	71.3	39
Insured Unemployed (000) ***			
Regular Programs:	17.9	21.9	39
All Programs:	34.5	39.8	39
Reciency Rates (%) ***			
Regular Programs:	26	31	34
All Programs:	49	56	42
Covered Emp. (000)**:	669	664	39
Civ. Labor Force (000):	776	782	39
Subj. Employers (000):	36	36	44

Extended Benefits

	(Quarterly)	Past 12 Months
Extended Benefits (000):	\$10,403	\$21,153
EB First Payments:	1,809	5,313
EB Weeks Claimed:	36,996	79,999
EB Exhaustions:	1,273	2,703

Loans

	Rank
Outstanding Loan Bal (000):	\$0 31
Loan per Cov Employee:	\$0 31
Loan as % of Total Wages*:	0.0000 31

* Based on extrapolated wages for the most recent 12 months.

** Wages and Covered Employment lag the rest of the Data Summary information by six months

*** Regular programs include State UI, UCFE and UCX.

+ Refers to most recent calendar year. Fourth and first quarter issues publish measure based on extrapolated wages. Second and third quarter issues publish measure based on actual wages.

See glossary for data definitions

Note: Blank cells appearing in any section of this report indicates that information is unavailable.

UI Data Summary for Wisconsin

CYQ: 2010.4

Benefits

	(Quarterly)	Past 12 Months	Rank	High Value : Qtr		Low Value : Qtr	
Benefits Paid (000):	\$267,988	\$1,376,310	13	\$577,203	2009.1	\$13,881	1973.3
Initial Claims:	220,441	805,569	8	304,168	2009.1	40,405	1973.2
First Payments:	83,631	324,879	9	156,184	2009.1	15,946	1973.2
Weeks Claimed:	1,292,233	6,283,800	12	2,318,143	2009.1	291,967	1973.3
Wks Compensated:	1,163,304	5,770,210	11	2,191,288	2009.1	221,033	1973.3
Exhaustions:	28,406	142,316	14	51,683	2009.3	3,847	1973.3
Exhaustion Rate:		38.3%	48	39.8%	2010.1	14.8%	2000.4
Average Duration:		17.8	34	18.4	2010.2	10.9	2001.1
AWBA:	\$268.97	\$274.94	36	\$290.54	2009.2	\$56.98	1971.3
As % of AWW:		36.6	29				
Avg. Benefits per First Payment:		\$4,236					

Financial Information

	Past 12 Months	Rank
State Revenues (000):	\$924,516	13
Total Wages (000)**:	\$25,240,351	18
Total Wages (Taxable Employers)(000)**:	\$18,724,968	22
Taxable Wages (000)**:	\$5,815,036	18
Avg. Weekly Wage**:	\$751.85	32
Avg. Tax Rate on Taxable Wages (%) **:	3.43	8
Avg. Tax Rate on Total Wages (%) **:	1.07	10
Calendar Yr Taxable Wage Base:	\$12,000	25
Trust Fund (TF) Balance (000):		
(Including Loans):	\$39,472	32
TF as % of Total Wages*:	0.05	32
Interest Earned (000):	\$0	39
Avg. High Cost Multiple +:	N.A.	24
High Cost Multiple +:	N.A.	24

Labor Force

	(Quarterly)	Past 12 Mos	Rank
IUR (%):	3.9	4.7	8
TUR (%):	7.1	8.3	40
Total Unemp. (000):	215.3	255.3	21
Insured Unemployed (000) ***			
Regular Programs:	101.1	122.9	12
All Programs:	195.9	227.8	14
Reciency Rates (%) ***			
Regular Programs:	47	48	2
All Programs:	91	89	2
Covered Emp. (000)**:	2,615	2,591	16
Civ. Labor Force (000):	3,039	3,063	18
Subj. Employers (000):	131	130	20

Extended Benefits

	(Quarterly)	Past 12 Months
Extended Benefits (000):	\$61,876	\$154,118
EB First Payments:	15,756	47,016
EB Weeks Claimed:	233,359	589,090
EB Exhaustions:	13,952	27,936

Loans

	Rank
Outstanding Loan Bal (000):	\$1,400,851 11
Loan per Cov Employee:	\$536 7
Loan as % of Total Wages*:	1.8237 4

* Based on extrapolated wages for the most recent 12 months.

** Wages and Covered Employment lag the rest of the Data Summary information by six months

*** Regular programs include State UI, UCFE and UCX.

+ Refers to most recent calendar year. Fourth and first quarter issues publish measure based on extrapolated wages. Second and third quarter issues publish measure based on actual wages.

See glossary for data definitions

Note: Blank cells appearing in any section of this report indicates that information is unavailable.

UI Data Summary for Wyoming

CYQ: 2010.4

Benefits

	(Quarterly)	Past 12 Months	Rank	High Value : Qtr		Low Value : Qtr	
Benefits Paid (000):	\$24,370	\$127,654	50	\$47,895	2009.2	\$282	1974.3
Initial Claims:	13,794	44,846	49	16,641	2009.4	1,089	1973.3
First Payments:	6,106	22,368	50	10,956	1983.1	440	1974.3
Weeks Claimed:	84,714	415,892	50	172,109	1983.1	7,676	1974.3
Wks Compensated:	78,199	387,495	50	180,987	1983.1	5,338	1974.3
Exhaustions:	2,154	12,510	50	5,042	1983.2	137	1974.4
Exhaustion Rate:		49.7%	35	58.0%	2009.3	17.1%	1979.4
Average Duration:		17.3	37	19.7	1987.3	9.6	1976.3
AWBA:	\$318.68	\$337.05	11	\$354.79	2009.2	\$47.47	1971.3
As % of AWW:		43.3	7				
Avg. Benefits per First Payment:		\$5,707					

Financial Information

	Past 12 Months	Rank
State Revenues (000):	\$92,034	49
Total Wages (000)**:	\$2,678,106	52
Total Wages (Taxable Employers)(000)**:	\$1,989,171	51
Taxable Wages (000)**:	\$1,142,137	49
Avg. Weekly Wage**:	\$778.86	26
Avg. Tax Rate on Taxable Wages (%) **:	2.01	36
Avg. Tax Rate on Total Wages (%) **:	1.00	15
Calendar Yr Taxable Wage Base:	\$22,800	13
Trust Fund (TF) Balance (000):		
(Including Loans):	\$124,298	19
TF as % of Total Wages*:	1.57	7
Interest Earned (000):	\$1,334	16
Avg. High Cost Multiple +:	1.07	5
High Cost Multiple +:	0.52	9

Labor Force

	(Quarterly)	Past 12 Mos	Rank
IUR (%):	2.1	2.7	46
TUR (%):	6.2	7.0	45
Total Unemp. (000):	18.1	20.5	51
Insured Unemployed (000) ***			
Regular Programs:	5.6	7.0	50
All Programs:	9.8	11.3	50
Reciency Rates (%) ***			
Regular Programs:	31	34	22
All Programs:	54	55	32
Covered Emp. (000)**:	264	262	52
Civ. Labor Force (000):	291	294	52
Subj. Employers (000):	22	22	50

Extended Benefits

	(Quarterly)	Past 12 Months
Extended Benefits (000):	\$0	\$0
EB First Payments:	0	0
EB Weeks Claimed:	0	0
EB Exhaustions:	0	0

Loans

	Rank
Outstanding Loan Bal (000):	\$0 31
Loan per Cov Employee:	\$0 31
Loan as % of Total Wages*:	0.0000 31

* Based on extrapolated wages for the most recent 12 months.

** Wages and Covered Employment lag the rest of the Data Summary information by six months

*** Regular programs include State UI, UCFE and UCX.

+ Refers to most recent calendar year. Fourth and first quarter issues publish measure based on extrapolated wages. Second and third quarter issues publish measure based on actual wages.

See glossary for data definitions

Note: Blank cells appearing in any section of this report indicates that information is unavailable.

UI Data Summary for **United States**

CYQ: 2010.4

Benefits

	(Quarterly)	Past 12 Months	High Value : Qtr		Low Value : Qtr	
Benefits Paid (000):	\$12,130,222	\$58,551,993	\$21,954,361	2009.2	\$860,035	1973.3
Initial Claims:	6,165,041	23,624,531	8,560,348	2009.1	2,671,661	1973.2
First Payments:	2,461,368	10,738,572	4,764,523	2009.1	1,074,462	1973.2
Weeks Claimed:	50,479,819	233,180,144	80,002,345	2009.2	18,445,892	1973.3
Wks Compensated:	42,883,928	203,353,336	72,391,496	2009.2	15,351,045	1973.3
Exhaustions:	1,360,098	6,374,290	2,248,585	2009.3	332,910	1973.4
Exhaustion Rate:		53.4%	55.2%	2010.2	25.8%	1979.2
Average Duration:		18.9	20.1	2010.1	12.4	1975.1
AWBA:	\$294.29	\$299.33	\$313.75	2009.2	\$52.64	1971.3
As % of AWW:		34.4				
Avg. Benefits Per First Payment:		\$5,452				

Financial Information

	Past 12 Months
State Revenues (000):	\$40,047,838
Total Wages (000)**:	\$1,398,590,852
Total Wages (Taxable Employers) (000)**:	\$1,090,201,537
Taxable Wages (000)**:	\$279,213,541
Avg. Weekly Wage**:	\$871.06
Avg. Tax Rate on Taxable Wages (%) **:	2.81
Avg. Tax Rate on Total Wages (%) **:	0.76
Avg. State CY Taxable Wage Base:	\$12,213
Trust Fund (TF) Balance (000):	
(Including Loans):	\$9,506,552
TF as % of Total Wages*:	0.21
Interest Earned (000):	\$85,148
Avg. High Cost Multiple +:	N.A.
High Cost Multiple +:	N.A.

Labor Force

	(Quarterly)	Past 12 Months
IUR (%): (NSA)	3.2	3.6
TUR (%): (NSA)	9.2	9.6
Total Unemployed (000):	14,061	14,825
Insured Unemployed (000) ***		
Regular Programs:	3,967.4	4,554.1
All Programs:	8,769.8	9,792.3
Reciency Rates (%) ***		
Regular Programs:	28	31
All Programs:	62	66
Cov. Employ. (000)**:	126,504	125,560
Civ. Labor Force (000):	153,502	153,889
Subject Employers (000):	7,666	7,585

Extended Benefits

	(Quarterly)	Past 12 Months
Extended Benefits (000):	3,696,077	\$9,305,954
EB First Payments:	721,493	2,332,955
EB Weeks Claimed:	12,656,140	32,145,594
EB Exhaustions:	558,785	1,425,902

Loans

Outstanding Loan Bal (000):	\$40,220,175
Loan per Cov Employee:	\$317.94
Loan as % of Total Wages*:	0.8950

* Based on extrapolated wages for the most recent 12 months.

** Wages and Covered Employment lag the rest of the Data Summary information by six months.

*** Regular programs include State UI, UCFE and UCX.

+ Refers to most recent calendar year. Fourth and first quarter issues publish measure based on extrapolated wages. Second and third quarter issues publish measure based on actual wages.

See glossary for data definitions

[Back to Data Summary Home](#)

**AVERAGE BENEFITS PER
FIRST PAYMENT**

AVERAGE DURATION

AVERAGE HIGH COST RATE

**AVERAGE HIGH COST
MULTIPLE (AHCM)**

**AVERAGE TAX RATE
(Taxable Wages)**

**AVERAGE TAX RATE
(Total Wages)**

**AVERAGE WEEKLY BENEFIT
AMOUNT (AWBA)**

AVERAGE WEEKLY WAGE

BENEFITS PAID

CIVILIAN LABOR FORCE

COVERED EMPLOYMENT

EXHAUSTIONS

DATA DEFINITIONS

[Back to State Selection Page](#)

Benefits Paid for all weeks compensated divided by the number of first payments.

The number of weeks compensated for the year divided by the number of first payments. (ETA 5159)

The average of the three highest calendar year benefit cost rates in the last 20 years (or a period including three recessions, if longer). Benefit cost rates are benefits paid (including the state's share of extended benefits but excluding reimbursable benefits) as a percent of total wages in taxable employment.

Calendar Year Reserve Ratio (or "TF as % of Total Wages"); divided by the Average High Cost Rate.

Total employer contributions for a 12 month period divided by the total taxable wages for the same time period. (ES 202)

Total employer contributions for a 12 month period divided by the total wages paid by taxable employers for the same time period. (ES 202)

Benefits Paid for Total Unemployment divided by Weeks Compensated for Total Unemployment. (ETA 5159)

Total wages divided by covered employment, divided by 52 weeks. (ES 202)

The Unemployment benefits paid to individuals under a state program, usually the first 26 weeks of benefits, for all weeks compensated including partial payments. (ETA 5159)

The average number of individuals who are either employed or unemployed in the week of the 12th for the three months of the quarter. (Bureau of Labor Statistics)

The number of employees covered by Unemployment Insurance reported to the states by employers. (ETA 202)

Number of claimants drawing the final payment of their original entitlement for a given program. (ETA 5159)

DATA DEFINITIONS

[Back to Data Summary Home](#)

[Back to State Selection Page](#)

EXHAUSTION RATE

A rate computed by dividing the average monthly exhaustions by the average monthly first payments. To allow for the normal flow of claimants through the program, the numerator lags the denominator by 26 weeks, e.g., the exhaustion rate for CY 1995.3 is computed by dividing the average monthly exhaustions for the twelve months ending September 1995, by the average monthly first payments for the twelve months ending March 1995.

EXTENDED BENEFITS

The supplemental program that pays extended compensation during periods of specified high unemployment in a state to individuals for weeks of unemployment after exhaustion of regular UI benefits. One-half of EB is funded by the state trust fund. (ETA 5159)

FIRST PAYMENTS

The first payment in a benefit year for a week of unemployment claimed under a specific program. This is used as a proxy for "beneficiaries" under a specific program. (ETA 5159)

HIGH-COST MULTIPLE (HCM)

"TF as % of Total Wages" divided by the High Cost Rate. The High Cost Rate is the highest historical ratio of benefits to wages for a 12-month period.

HIGHEST/LOWEST QUARTER

The value displayed represents the quarter with the highest or lowest value beginning with the January through March quarter of 1971 (CY 1971.1). Exhaustion rate and average duration are for 4-quarter periods, ending with the quarter shown.

INITIAL CLAIMS

Any notice of unemployment filed (1) to request a determination of entitlement to and eligibility for compensation or (2) to begin a second or subsequent period of eligibility within a benefit year or period of eligibility. Interstate claims are counted in the paying state. (ETA 5159)

INSURED UNEMPLOYED

The average weekly number of weeks claimed for the three months of the quarter. (ETA 5159)

INSURED UNEMPLOYMENT RATE (IUR)

The rate computed by dividing Insured Unemployed for the current quarter by Covered Employment for the first four of the last six completed quarters. (ETA 539)

INTEREST EARNED

The amount of interest earned on the Unemployment Trust Fund account. (unpublished US Treasury reports)

DATA DEFINITIONS

[Back to Data Summary Home](#)

[Back to State Selection Page](#)

OUTSTANDING LOAN BALANCE	Balance, as of the end of the quarter, of advances acquired by the state under Title XII of the Social Security Act. (unpublished US Treasury reports)
RANK	All rankings are from highest to lowest for a particular item. Ties receive the same rank.
RECIPIENCY RATE	The insured unemployed in regular programs as a percent of total unemployed.
STATE REVENUE	Funds deposited in state accounts in the Unemployment Trust Fund (UTF). These revenues are used to pay state UI benefits and the state share of EB. (ETA 2112)
SUBJECT EMPLOYERS	The number of employers subject to UI taxes. (ETA 581)
TAX YEAR	The twelve-month time period in which a state's tax rate schedules and taxable wage base remain constant. This is equivalent to the calendar year for most states, with the exception of NH, NJ, TN, and VT. These 4 states have July-June tax years.
TAXABLE WAGES	Wages paid to covered employees that are subject to State Unemployment Insurance taxes. (ES 202)
TAXABLE WAGE BASE	For each State, the maximum amount of wages paid to an employee by an employer during a tax year which are subject to UI taxes. Wages above this amount are not subject to tax. Note: The taxable wage bases published in this report are current as of the date of issue. Therefore, they do not match the time period of the taxable wages and average tax rate on taxable wages.
TF AS % OF TOTAL WAGES	Trust fund balance as a percent of estimated wages for the most recent 12 months. Also referred to as the Reserve Ratio. Estimated wages are based on the latest growth rate in the 12 month moving average (MA). <i>Example for 1997.4: Growth rate = ((MA1997.2-MA1996.4)/MA1996.4); MA1997.4=MA1997.2*growth rate)</i>
TOTAL UNEMPLOYED	The average number of individuals, 16 years of age or older, who do not have a job but are available for work and actively seeking work in the week of the 12th for the three months of the quarter. This includes individuals on layoff and waiting to report to a new job within 30 days. (Bureau of Labor Statistics-Not Seasonally Adjusted)

DATA DEFINITIONS

[Back to Data Summary Home](#)

[Back to State Selection Page](#)

TOTAL UNEMPLOYMENT RATE (TUR)

The rate computed by dividing Total Unemployed by the Civilian Labor Force. (Bureau of Labor Statistics)

TOTAL WAGES

All wages or remuneration paid to workers on all payrolls covered by Unemployment Insurance. (ES 202)

TOTAL WAGES (Taxable Employers)

All wages or remuneration paid to workers by all taxable employers. (ES 202)

TRUST FUND BALANCE (TF)

The balance in the individual state account in the Unemployment Trust Fund.
(unpublished US Treasury reports)

UCFE

Unemployment Compensation for Federal Civilian Employees

UCX

Unemployment Compensation for Ex-Service Members

UNEMPLOYMENT TRUST FUND (UTF)

A fund established in the Treasury of United States which contains all monies deposited by state agencies to the credit of their unemployment fund accounts and Federal unemployment taxes collected by the Internal Revenue Service.

WEEKS CLAIMED

The number of weeks of benefits claimed, including weeks for which a waiting period or fixed disqualification period is being served. Interstate claims are counted in the paying state. (ETA 5159)

WEEKS COMPENSATED

The number of weeks claimed for which UI benefits are paid. Weeks compensated for partial unemployment are included. Interstate claims are counted in the paying state. (ETA 5159)